

The background of the entire page is a dark, high-contrast wood grain texture. The grain runs diagonally from the top-left towards the bottom-right, with varying shades of dark grey and black, creating a sense of depth and organic movement.

# MIDWOOD

## FLOOR PLANS



SCHEMATIC DIAGRAM

8 Hillview Rise  
(S) 667971

29	#29-01 (1)b	#29-02 (2+1)b	#29-03 (3Y)b	#29-04 (2P)a	#29-05 (2P)b	#29-06 (1)a	#29-07 (2+1)a	#29-08 (3)b	#29-09 (1+1)a	#29-10 (2)a
28	#28-01 (1)b	#28-02 (2+1)b	#28-03 (3Y)b	#28-04 (2P)a	#28-05 (2P)b	#28-06 (1)a	#28-07 (2+1)a	#28-08 (3)b	#28-09 (1+1)a	#28-10 (2)a
27	#27-01 (1)b	#27-02 (2+1)b	#27-03 (3Y)b	#27-04 (2P)a	#27-05 (2P)b	#27-06 (1)a	#27-07 (2+1)a	#27-08 (3)b	#27-09 (1+1)a	#27-10 (2)a
26	#26-01 (1)b	#26-02 (2+1)b	#26-03 (3Y)b	#26-04 (2P)a	#26-05 (2P)b	#26-06 (1)a	#26-07 (2+1)a	#26-08 (3)b	#26-09 (1+1)a	#26-10 (2)a
25	#25-01 (1)b	#25-02 (2+1)b	#25-03 (3Y)b	#25-04 (2P)a	#25-05 (2P)b	#25-06 (1)a	#25-07 (2+1)a	#25-08 (3)b	#25-09 (1+1)a	#25-10 (2)a
24	#24-01 (1)b	#24-02 (2+1)b	#24-03 (3Y)b	#24-04 (2P)a	#24-05 (2P)b	#24-06 (1)a	#24-07 (2+1)a	#24-08 (3)b	#24-09 (1+1)a	#24-10 (2)a
23	#23-01 (1)b	#23-02 (2+1)b	#23-03 (3Y)b	#23-04 (2P)a	#23-05 (2P)b	#23-06 (1)a	#23-07 (2+1)a	#23-08 (3)b	#23-09 (1+1)a	#23-10 (2)a
22	#22-01 (1)b	#22-02 (2+1)b	#22-03 (3Y)b	#22-04 (2P)a	#22-05 (2P)b	#22-06 (1)a	#22-07 (2+1)a	#22-08 (3)b	#22-09 (1+1)a	#22-10 (2)a
21	#21-01 (1)b	#21-02 (2+1)b	#21-03 (3Y)b	#21-04 (2P)a	#21-05 (2P)b	#21-06 (1)a	#21-07 (2+1)a	#21-08 (3)b	#21-09 (1+1)a	#21-10 (2)a
20	#20-01 (1)b	#20-02 (2+1)b	#20-03 (3Y)b	#20-04 (2P)a	#20-05 (2P)b	#20-06 (1)a	#20-07 (2+1)a	#20-08 (3)b	#20-09 (1+1)a	#20-10 (2)a
19	#19-01 (1)b	#19-02 (2+1)b	#19-03 (3Y)b	#19-04 (2P)a	#19-05 (2P)b	#19-06 (1)a	#19-07 (2+1)a	#19-08 (3)b	#19-09 (1+1)a	#19-10 (2)a
18	#18-01 (1)b	#18-02 (2+1)b	#18-03 (3Y)b	#18-04 (2P)a	#18-05 (2P)b	#18-06 (1)a	#18-07 (2+1)a	#18-08 (3)b	#18-09 (1+1)a	#18-10 (2)a
17	#17-01 (1)b	#17-02 (2+1)b	#17-03 (3Y)b	#17-04 (2P)a	#17-05 (2P)b	#17-06 (1)a	#17-07 (2+1)a	#17-08 (3)b	#17-09 (1+1)a	#17-10 (2)a
16	#16-01 (1)b	#16-02 (2+1)b	#16-03 (3Y)b	#16-04 (2P)a	#16-05 (2P)b	#16-06 (1)a	#16-07 (2+1)a	#16-08 (3)b	#16-09 (1+1)a	#16-10 (2)a
15	#15-01 (1)b	#15-02 (2+1)b	#15-03 (3Y)b	#15-04 (2P)a	#15-05 (2P)b	#15-06 (1)a	#15-07 (2+1)a	#15-08 (3)b	#15-09 (1+1)a	#15-10 (2)a
14	#14-01 (1)b	#14-02 (2+1)b	#14-03 (3Y)b	#14-04 (2P)a	#14-05 (2P)b	#14-06 (1)a	#14-07 (2+1)a	#14-08 (3)b	#14-09 (1+1)a	#14-10 (2)a
13	#13-01 (1)b	#13-02 (2+1)b	#13-03 (3Y)b	#13-04 (2P)a	#13-05 (2P)b	#13-06 (1)a	#13-07 (2+1)a	#13-08 (3)b	#13-09 (1+1)a	#13-10 (2)a
12	#12-01 (1)b	#12-02 (2+1)b	#12-03 (3Y)b	#12-04 (2P)a	#12-05 (2P)b	#12-06 (1)a	#12-07 (2+1)a	#12-08 (3)b	#12-09 (1+1)a	#12-10 (2)a
11	#11-01 (1)b	#11-02 (2+1)b	#11-03 (3Y)b	#11-04 (2P)a	#11-05 (2P)b	#11-06 (1)a	#11-07 (2+1)a	#11-08 (3)b	#11-09 (1+1)a	#11-10 (2)a
10	#10-01 (1)b	#10-02 (2+1)b	#10-03 (3Y)b	#10-04 (2P)a	#10-05 (2P)b	#10-06 (1)a	#10-07 (2+1)a	#10-08 (3)b	#10-09 (1+1)a	#10-10 (2)a
9	#09-01 (1)b	#09-02 (2+1)b	#09-03 (3Y)b	#09-04 (2P)a	#09-05 (2P)b	#09-06 (1)a	#09-07 (2+1)a	#09-08 (3)b	#09-09 (1+1)a	#09-10 (2)a
8	#08-01 (1)b	#08-02 (2+1)b	#08-03 (3Y)b	#08-04 (2P)a	#08-05 (2P)b	#08-06 (1)a	#08-07 (2+1)a	#08-08 (3)b	#08-09 (1+1)a	#08-10 (2)a
7	#07-01 (1)b	#07-02 (2+1)b	#07-03 (3Y)b	#07-04 (2P)a	#07-05 (2P)b	#07-06 (1)a	#07-07 (2+1)a	#07-08 (3)b	#07-09 (1+1)a	#07-10 (2)a
6	#06-01 (1)b	#06-02 (2+1)b	#06-03 (3Y)b	#06-04 (2P)a	#06-05 (2P)b	#06-06 (1)a	#06-07 (2+1)a	#06-08 (3)b	#06-09 (1+1)a	#06-10 (2)a
5	#05-01 (1)b	#05-02 (2+1)b	#05-03 (3Y)b	#05-04 (2P)a	#05-05 (2P)b	#05-06 (1)a	#05-07 (2+1)a	#05-08 (3)b	#05-09 (1+1)a	#05-10 (2)a
4	#04-01 (1)b	#04-02 (2+1)b	#04-03 (3Y)b	#04-04 (2P)a	#04-05 (2P)b	#04-06 (1)a	#04-07 (2+1)a	#04-08 (3)b	#04-09 (1+1)a	#04-10 (2)a
3	#03-01 (1)b	#03-02 (2+1)b	#03-03 (3Y)b	#03-04 (2P)a	#03-05 (2P)b	#03-06 (1)a	#03-07 (2+1)a	#03-08 (3)b	#03-09 (1+1)a	#03-10 (2)a
2	Childcare Centre			#02-04 (2P)a	#02-05 (2P)b	#02-06 (1)a	Childcare Centre			
1				#01-04 (1)c1	#01-05 (2P)b1	#01-06 (1)a1				

10 Hillview Rise  
(S) 667972

29	#29-11 (1)b	#29-12 (4)b	#29-13 (3)a	#29-14 (2P)a	#29-15 (2P)b	#29-16 (1)a	#29-17 (4)a	#29-18 (3Y)a	#29-19 (1+1)a	#29-20 (2)a
28	#28-11 (1)b	#28-12 (4)b	#28-13 (3)a	#28-14 (2P)a	#28-15 (2P)b	#28-16 (1)a	#28-17 (4)a	#28-18 (3Y)a	#28-19 (1+1)a	#28-20 (2)a
27	#27-11 (1)b	#27-12 (4)b	#27-13 (3)a	#27-14 (2P)a	#27-15 (2P)b	#27-16 (1)a	#27-17 (4)a	#27-18 (3Y)a	#27-19 (1+1)a	#27-20 (2)a
26	#26-11 (1)b	#26-12 (4)b	#26-13 (3)a	#26-14 (2P)a	#26-15 (2P)b	#26-16 (1)a	#26-17 (4)a	#26-18 (3Y)a	#26-19 (1+1)a	#26-20 (2)a
25	#25-11 (1)b	#25-12 (4)b	#25-13 (3)a	#25-14 (2P)a	#25-15 (2P)b	#25-16 (1)a	#25-17 (4)a	#25-18 (3Y)a	#25-19 (1+1)a	#25-20 (2)a
24	#24-11 (1)b	#24-12 (4)b	#24-13 (3)a	#24-14 (2P)a	#24-15 (2P)b	#24-16 (1)a	#24-17 (4)a	#24-18 (3Y)a	#24-19 (1+1)a	#24-20 (2)a
23	#23-11 (1)b	#23-12 (4)b	#23-13 (3)a	#23-14 (2P)a	#23-15 (2P)b	#23-16 (1)a	#23-17 (4)a	#23-18 (3Y)a	#23-19 (1+1)a	#23-20 (2)a
22	#22-11 (1)b	#22-12 (4)b	#22-13 (3)a	#22-14 (2P)a	#22-15 (2P)b	#22-16 (1)a	#22-17 (4)a	#22-18 (3Y)a	#22-19 (1+1)a	#22-20 (2)a
21	#21-11 (1)b	#21-12 (4)b	#21-13 (3)a	#21-14 (2P)a	#21-15 (2P)b	#21-16 (1)a	#21-17 (4)a	#21-18 (3Y)a	#21-19 (1+1)a	#21-20 (2)a
20	#20-11 (1)b	#20-12 (4)b	#20-13 (3)a	#20-14 (2P)a	#20-15 (2P)b	#20-16 (1)a	#20-17 (4)a	#20-18 (3Y)a	#20-19 (1+1)a	#20-20 (2)a
19	#19-11 (1)b	#19-12 (4)b	#19-13 (3)a	#19-14 (2P)a	#19-15 (2P)b	#19-16 (1)a	#19-17 (4)a	#19-18 (3Y)a	#19-19 (1+1)a	#19-20 (2)a
18	#18-11 (1)b	#18-12 (4)b	#18-13 (3)a	#18-14 (2P)a	#18-15 (2P)b	#18-16 (1)a	#18-17 (4)a	#18-18 (3Y)a	#18-19 (1+1)a	#18-20 (2)a
17	#17-11 (1)b	#17-12 (4)b	#17-13 (3)a	#17-14 (2P)a	#17-15 (2P)b	#17-16 (1)a	#17-17 (4)a	#17-18 (3Y)a	#17-19 (1+1)a	#17-20 (2)a
16	#16-11 (1)b	#16-12 (4)b	#16-13 (3)a	#16-14 (2P)a	#16-15 (2P)b	#16-16 (1)a	#16-17 (4)a	#16-18 (3Y)a	#16-19 (1+1)a	#16-20 (2)a
15	#15-11 (1)b	#15-12 (4)b	#15-13 (3)a	#15-14 (2P)a	#15-15 (2P)b	#15-16 (1)a	#15-17 (4)a	#15-18 (3Y)a	#15-19 (1+1)a	#15-20 (2)a
14	#14-11 (1)b	#14-12 (4)b	#14-13 (3)a	#14-14 (2P)a	#14-15 (2P)b	#14-16 (1)a	#14-17 (4)a	#14-18 (3Y)a	#14-19 (1+1)a	#14-20 (2)a
13	#13-11 (1)b	#13-12 (4)b	#13-13 (3)a	#13-14 (2P)a	#13-15 (2P)b	#13-16 (1)a	#13-17 (4)a	#13-18 (3Y)a	#13-19 (1+1)a	#13-20 (2)a
12	#12-11 (1)b	#12-12 (4)b	#12-13 (3)a	#12-14 (2P)a	#12-15 (2P)b	#12-16 (1)a	#12-17 (4)a	#12-18 (3Y)a	#12-19 (1+1)a	#12-20 (2)a
11	#11-11 (1)b	#11-12 (4)b	#11-13 (3)a	#11-14 (2P)a	#11-15 (2P)b	#11-16 (1)a	#11-17 (4)a	#11-18 (3Y)a	#11-19 (1+1)a	#11-20 (2)a
10	#10-11 (1)b	#10-12 (4)b	#10-13 (3)a	#10-14 (2P)a	#10-15 (2P)b	#10-16 (1)a	#10-17 (4)a	#10-18 (3Y)a	#10-19 (1+1)a	#10-20 (2)a
9	#09-11 (1)b	#09-12 (4)b	#09-13 (3)a	#09-14 (2P)a	#09-15 (2P)b	#09-16 (1)a	#09-17 (4)a	#09-18 (3Y)a	#09-19 (1+1)a	#09-20 (2)a
8	#08-11 (1)b	#08-12 (4)b	#08-13 (3)a	#08-14 (2P)a	#08-15 (2P)b	#08-16 (1)a	#08-17 (4)a	#08-18 (3Y)a	#08-19 (1+1)a	#08-20 (2)a
7	#07-11 (1)b	#07-12 (4)b	#07-13 (3)a	#07-14 (2P)a	#07-15 (2P)b	#07-16 (1)a	#07-17 (4)a	#07-18 (3Y)a	#07-19 (1+1)a	#07-20 (2)a
6	#06-11 (1)b	#06-12 (4)b	#06-13 (3)a	#06-14 (2P)a	#06-15 (2P)b	#06-16 (1)a	#06-17 (4)a	#06-18 (3Y)a	#06-19 (1+1)a	#06-20 (2)a
5	#05-11 (1)b	#05-12 (4)b	#05-13 (3)a	#05-14 (2P)a	#05-15 (2P)b	#05-16 (1)a	#05-17 (4)a	#05-18 (3Y)a	#05-19 (1+1)a	#05-20 (2)a
4	#04-11 (1)b	#04-12 (4)b	#04-13 (3)a	#04-14 (2P)a	#04-15 (2P)b	#04-16 (1)a	#04-17 (4)a	#04-18 (3Y)a	#04-19 (1+1)a	#04-20 (2)a
3	#03-11 (1)b	#03-12 (4)b	#03-13 (3)a	#03-14 (2P)a	#03-15 (2P)b	#03-16 (1)a	#03-17 (4)a	#03-18 (3Y)a	#03-19 (1+1)a	#03-20 (2)a
2	#02-11 (1)b	#02-12 (4)b		#02-14 (2P)a	#02-15 (2P)b	#02-16 (1)a	#02-17 (4)a	#02-18 (3Y)a	#02-19 (1+1)a	#02-20 (2)a
1	#01-11 (1)b1	#01-12 (4)b1		#01-14 (1)c1	#01-15 (2P)b1	#01-16 (1)a1	#01-17 (4)a1	#01-18 (3Y)a1	#01-19 (1+1)a1	#01-20 (2)a1

1-Bedroom

1-Bedroom (with Study)

2-Bedroom

2-Bedroom (with Study)

3-Bedroom

3-Bedroom (with Yard)

4-Bedroom





# SITE PLAN

**Legend**

- 1-Bedroom
- 1-Bedroom (with Study)
- 2-Bedroom
- 2-Bedroom (with Study)
- 3-Bedroom
- 3-Bedroom (with Yard)
- 4-Bedroom
- Water tank position (roof level)

## List of Facilities:

### Facilities located at 1st storey:

- a** Clubhouse, incorporating:
  - Function rooms (2 nos)
  - Reading lounge
  - Poolside lounge deck
- b** Leisure pool (surfacing area approx. 450m<sup>2</sup>), incorporating:
  - Pool deck (3 nos)
  - Lounge deck (1 no)
  - Outdoor shower (1 no)
- c** Changing room (male and female changing room, each with steam room)
- d** Accessible toilet
- e** Cascading water wall
- f** Hydrotherapy pool
- g** Spa suite with jacuzzi
- h** Yoga lawn
- i** Community lawn
- j** Community corner
- k** Gardenia courtyard
- l** Crepe Myrtle courtyard
- m** Picnic pavilion with BBQ pit
- n** Picnic lawn
- o** Tennis court (1 no, hard court)
- p** Bauhinia walk
- q** Hammock enclave
- r** Management office
- s** Resident's drop off
- t** Arrival court

- u** Guard House
  - v** Entry and exit to carpark
  - w** Pedestrian side gate
  - x** Bin centre
  - y** Substation
  - z** Generator set
  - aa** Childcare Centre
  - bb** Childcare Centre's dropoff
  - cc** Childcare Centre's parking
- Facilities located at 2nd storey (roof of substation):**
- dd** Link bridge
  - ee** Outdoor fitness corner
  - ff** Private dining pavilion with BBQ pit

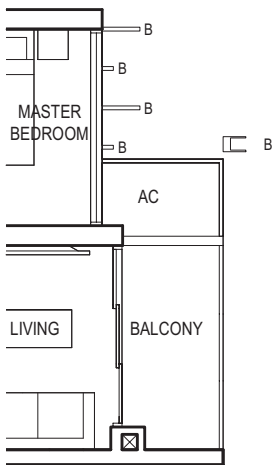
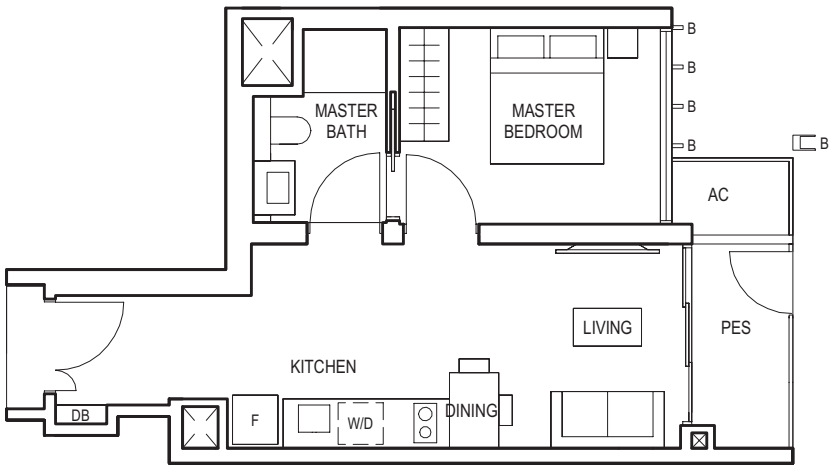
### Facilities located at 7th storey (roof of MSCP):

- gg** 50m infinity lap pool (surfacing area approx. 400m<sup>2</sup>), incorporating:
  - Sun bathing deck (2 nos)
  - Outdoor shower (2 nos)
- hh** Gym
- ii** Palm court
- jj** Accessible toilet (2 nos)
- kk** Kid's pool with aqua play equipment (surfacing area approx. 75m<sup>2</sup>), incorporating:
  - Fun deck (2 nos)
- ll** Children's Playground
- mm** Gourmet pavilion with BBQ pit
- nn** Party Deck
- oo** Wine & dine pavilion with BBQ pit
- pp** Stargazing Deck

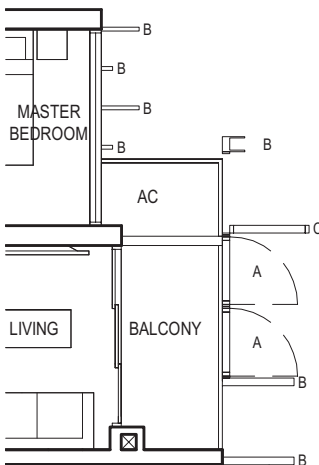


1-BEDROOM

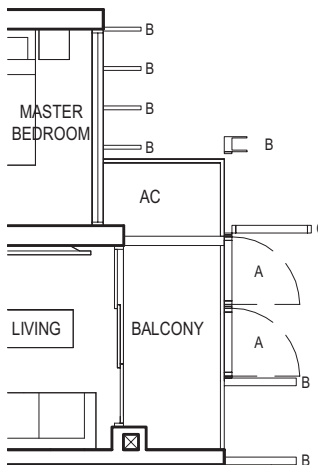
TYPE (1)a1  
#01-16  
45 sq m



Applicable to unit  
#08-16 only

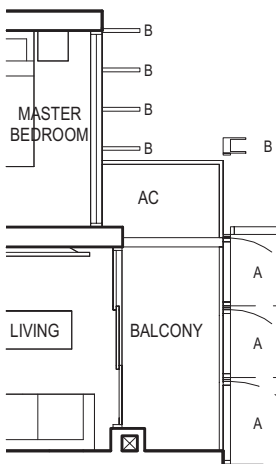
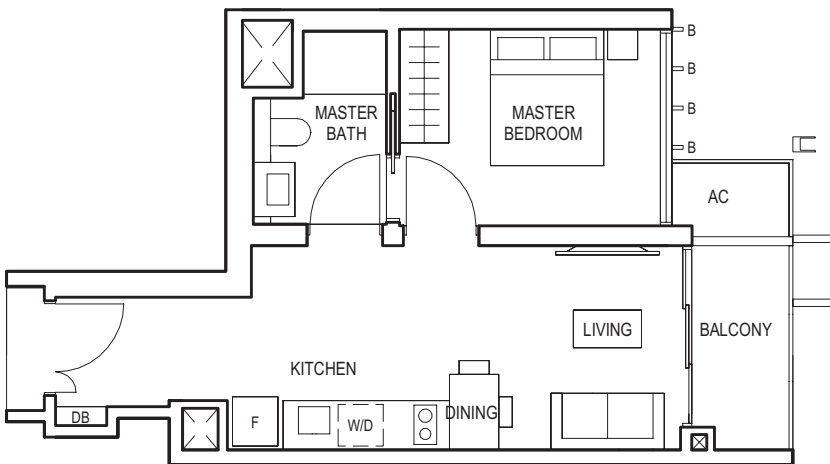


Applicable to unit  
#09-16 to #11-16 only

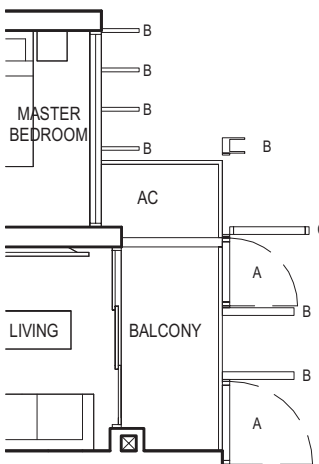


Applicable to unit  
#12-16 & #13-16 only

TYPE (1)a  
#02-16 to #29-16  
45 sq m



Applicable to unit  
#14-16, #15-16 &  
#21-16 to #29-16 only



Applicable to unit  
#16-16 to #20-16 only



FULL HEIGHT VERTICAL VISUAL SCREENS:  
A - OPENABLE SCREEN B - FIXED FIN C - FIXED SCREEN

LEGEND:  
F - FRIDGE DB - DISTRIBUTION BOARD WC - WATER CLOSET W/D - WASHER CUM DRYER W - WASHER D - DRYER AC - AIRCON LEDGE  
\* VISUAL SCREENS ARE SUBJECT TO VISUAL CONTROL REQUIREMENT IMPOSED/APPROVED BY THE RELEVANT AUTHORITY.  
\* AREA INCLUDES AIRCON (AC) LEDGE, BALCONY AND PRIVATE ENCLOSED SPACE (PES).  
\* THE BALCONY/PRIVATE ENCLOSED SPACE (PES) SHALL NOT BE ENCLOSED UNLESS WITH THE APPROVED BALCONY/PES SCREEN. FOR AN ILLUSTRATION OF THE APPROVED BALCONY/PES SCREEN, PLEASE REFER TO THE DIAGRAM ANNEXED HERETO AS 'ANNEXURE 1'.

BLOCK 10



BLOCK 8



KEY PLAN



FULL HEIGHT VERTICAL VISUAL SCREENS:  
A - OPENABLE SCREEN B - FIXED FIN C - FIXED SCREEN

LEGEND:  
F - FRIDGE DB - DISTRIBUTION BOARD WC - WATER CLOSET W/D - WASHER CUM DRYER W - WASHER D - DRYER AC - AIRCON LEDGE  
\* VISUAL SCREENS ARE SUBJECT TO VISUAL CONTROL REQUIREMENT IMPOSED/APPROVED BY THE RELEVANT AUTHORITY.  
\* AREA INCLUDES AIRCON (AC) LEDGE, BALCONY AND PRIVATE ENCLOSED SPACE (PES).  
\* THE BALCONY/PRIVATE ENCLOSED SPACE (PES) SHALL NOT BE ENCLOSED UNLESS WITH THE APPROVED BALCONY/PES SCREEN. FOR AN ILLUSTRATION OF THE APPROVED BALCONY/PES SCREEN, PLEASE REFER TO THE DIAGRAM ANNEXED HERETO AS 'ANNEXURE 1'.

BLOCK 10



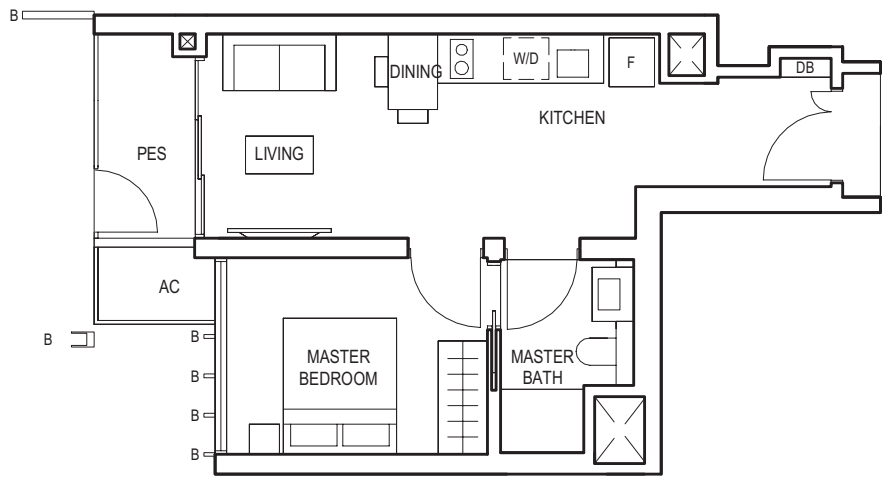
BLOCK 8



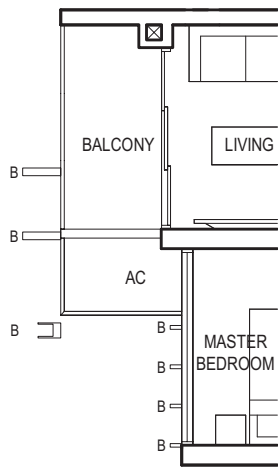
KEY PLAN

1-BEDROOM

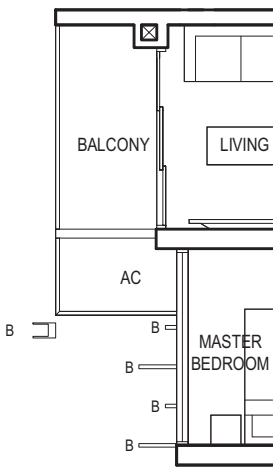
TYPE (1)a1  
#01-06  
45 sq m



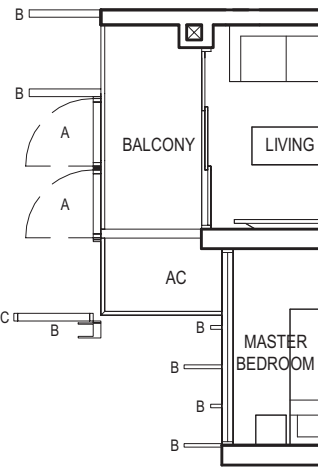
TYPE (1)a  
#02-06 to #29-06  
45 sq m



Applicable to unit  
#03-06 to #07-06 only

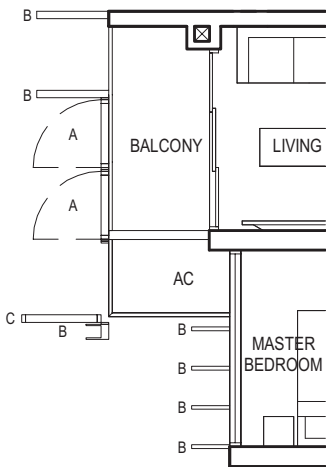
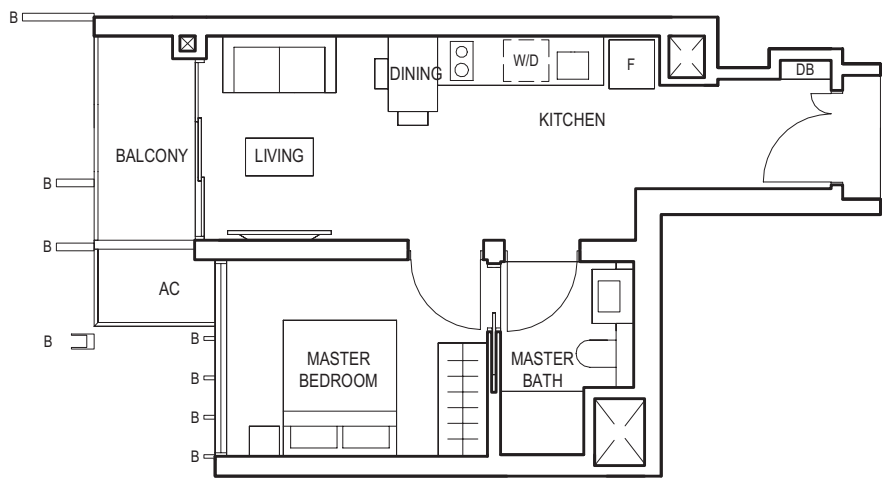


Applicable to unit  
#08-06 only

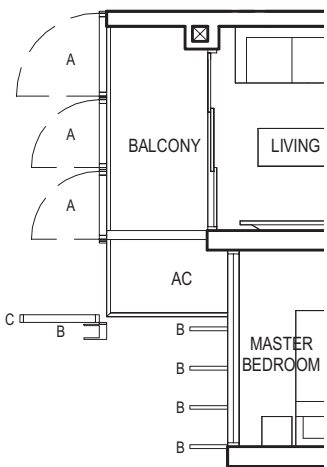


Applicable to unit  
#09-06 to #11-06 only

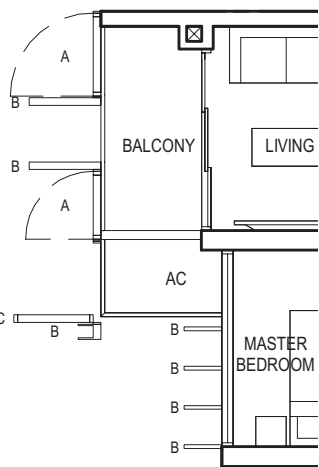
TYPE (1)a  
#02-06 to #29-06  
45 sq m



Applicable to unit  
#12-06 & #13-06 only



Applicable to unit  
#14-06, #15-06 &  
#21-06 to #29-06 only



Applicable to unit  
#16-06 to #20-06 only

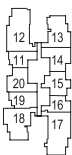


FULL HEIGHT VERTICAL VISUAL SCREENS:  
A - OPENABLE SCREEN    B - FIXED FIN    C - FIXED SCREEN

LEGEND:  
F - FRIDGE    DB - DISTRIBUTION BOARD    WC - WATER CLOSET    W/D - WASHER CUM DRYER    W - WASHER    D - DRYER    AC - AIRCON LEDGE

- \* VISUAL SCREENS ARE SUBJECT TO VISUAL CONTROL REQUIREMENT IMPOSED/APPROVED BY THE RELEVANT AUTHORITY.
- \* AREA INCLUDES AIRCON (AC) LEDGE, BALCONY AND PRIVATE ENCLOSED SPACE (PES).
- \* THE BALCONY/PRIVATE ENCLOSED SPACE (PES) SHALL NOT BE ENCLOSED UNLESS WITH THE APPROVED BALCONY/PES SCREEN. FOR AN ILLUSTRATION OF THE APPROVED BALCONY/PES SCREEN, PLEASE REFER TO THE DIAGRAM ANNEXED HERETO AS 'ANNEXURE 1'.

BLOCK 10



BLOCK 8



KEY PLAN



FULL HEIGHT VERTICAL VISUAL SCREENS:  
A - OPENABLE SCREEN    B - FIXED FIN    C - FIXED SCREEN

LEGEND:  
F - FRIDGE    DB - DISTRIBUTION BOARD    WC - WATER CLOSET    W/D - WASHER CUM DRYER    W - WASHER    D - DRYER    AC - AIRCON LEDGE

- \* VISUAL SCREENS ARE SUBJECT TO VISUAL CONTROL REQUIREMENT IMPOSED/APPROVED BY THE RELEVANT AUTHORITY.
- \* AREA INCLUDES AIRCON (AC) LEDGE, BALCONY AND PRIVATE ENCLOSED SPACE (PES).
- \* THE BALCONY/PRIVATE ENCLOSED SPACE (PES) SHALL NOT BE ENCLOSED UNLESS WITH THE APPROVED BALCONY/PES SCREEN. FOR AN ILLUSTRATION OF THE APPROVED BALCONY/PES SCREEN, PLEASE REFER TO THE DIAGRAM ANNEXED HERETO AS 'ANNEXURE 1'.

BLOCK 10



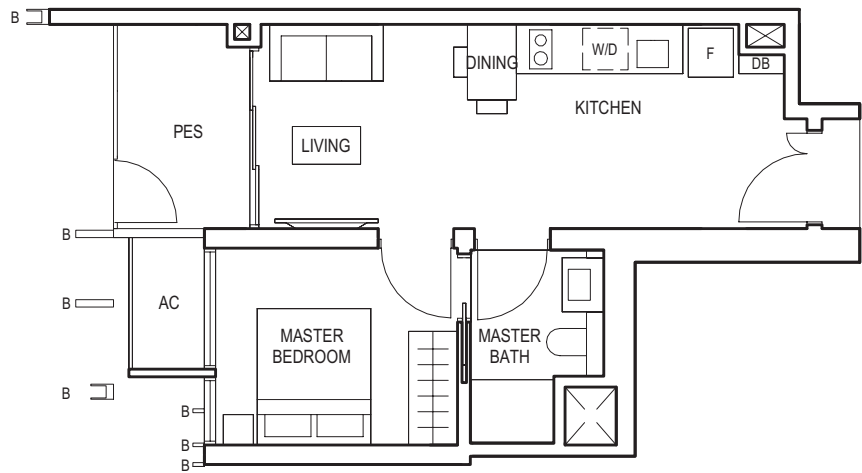
BLOCK 8



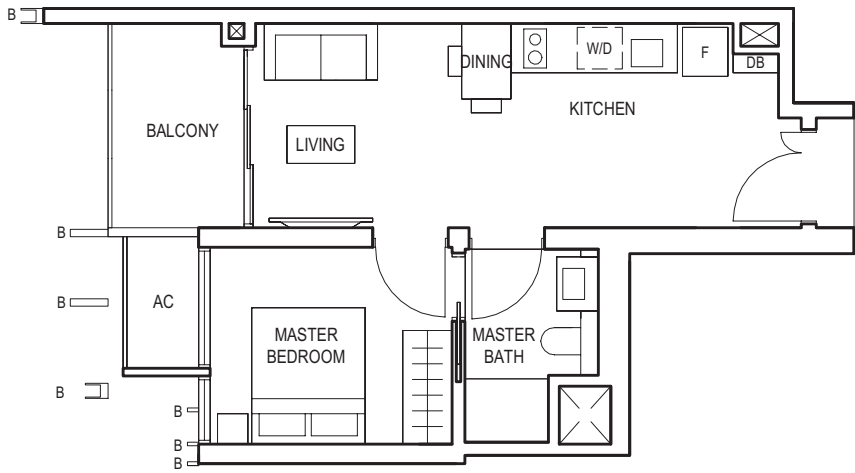
KEY PLAN

1-BEDROOM

TYPE (1)b1  
#01-11  
45 sq m



TYPE (1)b  
#02-11 to #29-11  
45 sq m

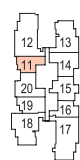


FULL HEIGHT VERTICAL VISUAL SCREENS:  
A - OPENABLE SCREEN    B - FIXED FIN    C - FIXED SCREEN

LEGEND:  
F - FRIDGE    DB - DISTRIBUTION BOARD    WC - WATER CLOSET    W/D - WASHER CUM DRYER    W - WASHER    D - DRYER    AC - AIRCON LEDGE

- \* VISUAL SCREENS ARE SUBJECT TO VISUAL CONTROL REQUIREMENT IMPOSED/APPROVED BY THE RELEVANT AUTHORITY.
- \* AREA INCLUDES AIRCON (AC) LEDGE, BALCONY AND PRIVATE ENCLOSED SPACE (PES).
- \* THE BALCONY/PRIVATE ENCLOSED SPACE (PES) SHALL NOT BE ENCLOSED UNLESS WITH THE APPROVED BALCONY/PES SCREEN. FOR AN ILLUSTRATION OF THE APPROVED BALCONY/PES SCREEN, PLEASE REFER TO THE DIAGRAM ANNEXED HERETO AS 'ANNEXURE 1'.

BLOCK 10

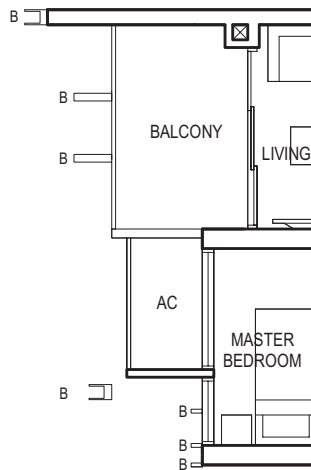


BLOCK 8

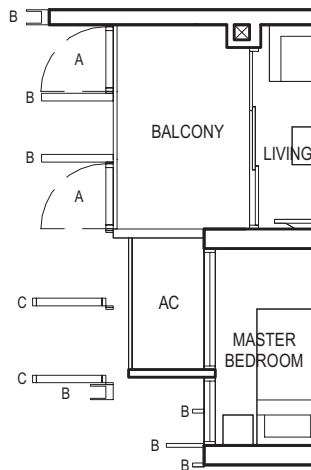


KEY PLAN

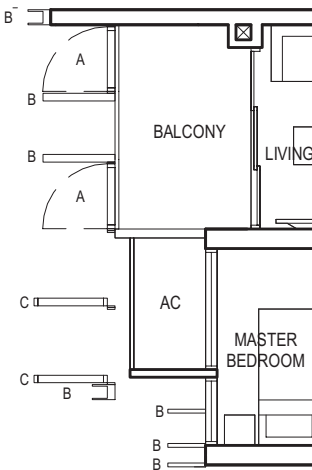
TYPE (1)b  
#02-11 to #29-11  
45 sq m



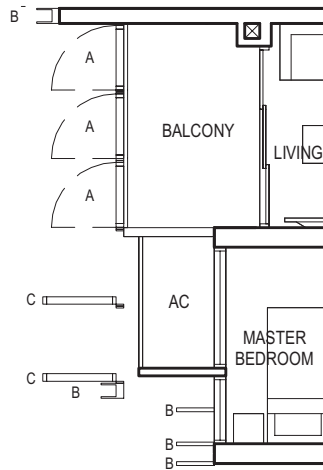
Applicable to unit  
#05-11 to #07-11 only



Applicable to unit  
#08-11 to #11-11 only



Applicable to unit  
#12-11, #13-11 &  
#16-11 to #20-11 only



Applicable to unit  
#14-11, #15-11 &  
#21-11 to #29-11 only

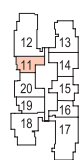


FULL HEIGHT VERTICAL VISUAL SCREENS:  
A - OPENABLE SCREEN    B - FIXED FIN    C - FIXED SCREEN

LEGEND:  
F - FRIDGE    DB - DISTRIBUTION BOARD    WC - WATER CLOSET    W/D - WASHER CUM DRYER    W - WASHER    D - DRYER    AC - AIRCON LEDGE

- \* VISUAL SCREENS ARE SUBJECT TO VISUAL CONTROL REQUIREMENT IMPOSED/APPROVED BY THE RELEVANT AUTHORITY.
- \* AREA INCLUDES AIRCON (AC) LEDGE, BALCONY AND PRIVATE ENCLOSED SPACE (PES).
- \* THE BALCONY/PRIVATE ENCLOSED SPACE (PES) SHALL NOT BE ENCLOSED UNLESS WITH THE APPROVED BALCONY/PES SCREEN. FOR AN ILLUSTRATION OF THE APPROVED BALCONY/PES SCREEN, PLEASE REFER TO THE DIAGRAM ANNEXED HERETO AS 'ANNEXURE 1'.

BLOCK 10



BLOCK 8

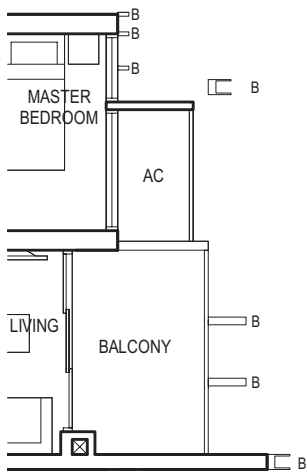
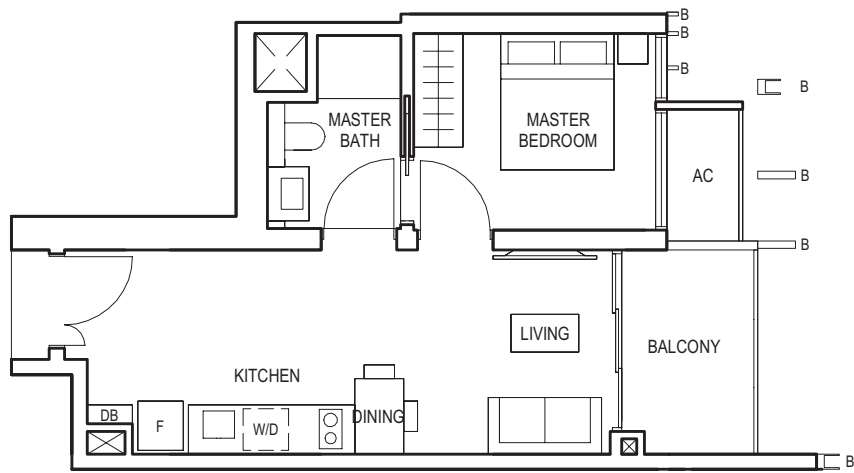


KEY PLAN

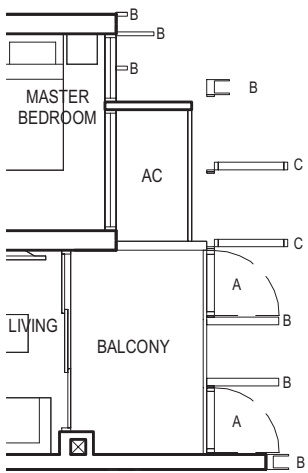
1-BEDROOM

TYPE (1)b  
#03-01 to #29-01  
45 sq m

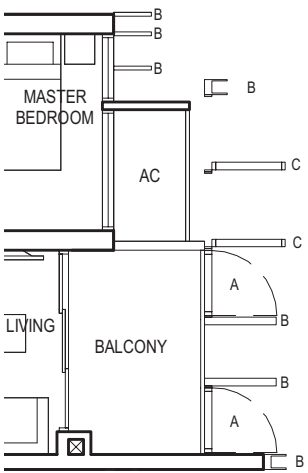
TYPE (1)c1  
#01-04, #01-14  
46 sq m



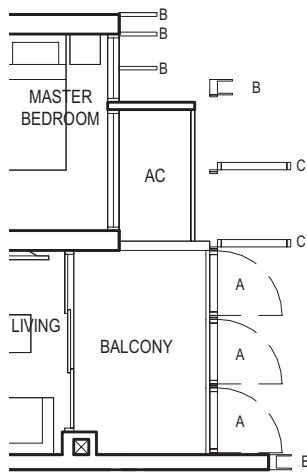
Applicable to unit  
#05-01 to #07-01 only



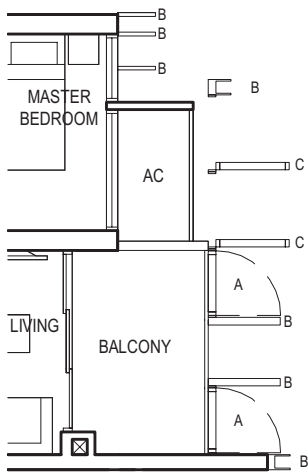
Applicable to unit  
#08-01 to #11-01 only



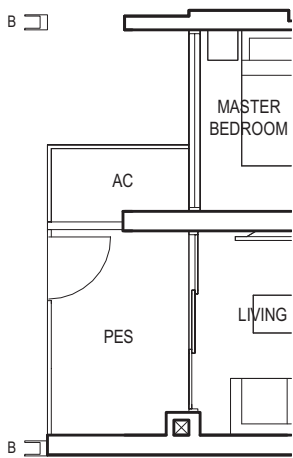
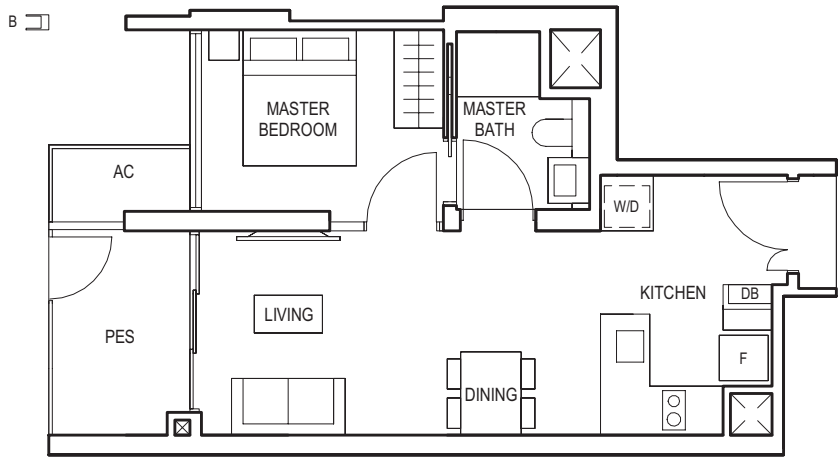
Applicable to unit  
#12-01 only



Applicable to unit  
#13-01, #14-01 &  
#20-01 to #29-01 only



Applicable to unit  
#15-01 to #19-01 only



Applicable to unit  
#01-14 only



FULL HEIGHT VERTICAL VISUAL SCREENS:  
A - OPENABLE SCREEN B - FIXED FIN C - FIXED SCREEN

LEGEND:  
F - FRIDGE DB - DISTRIBUTION BOARD WC - WATER CLOSET W/D - WASHER CUM DRYER W - WASHER D - DRYER AC - AIRCON LEDGE

- \* VISUAL SCREENS ARE SUBJECT TO VISUAL CONTROL REQUIREMENT IMPOSED/APPROVED BY THE RELEVANT AUTHORITY.
- \* AREA INCLUDES AIRCON (AC) LEDGE, BALCONY AND PRIVATE ENCLOSED SPACE (PES).
- \* THE BALCONY/PRIVATE ENCLOSED SPACE (PES) SHALL NOT BE ENCLOSED UNLESS WITH THE APPROVED BALCONY/PES SCREEN. FOR AN ILLUSTRATION OF THE APPROVED BALCONY/PES SCREEN, PLEASE REFER TO THE DIAGRAM ANNEXED HERETO AS 'ANNEXURE 1'.



FULL HEIGHT VERTICAL VISUAL SCREENS:  
A - OPENABLE SCREEN B - FIXED FIN C - FIXED SCREEN

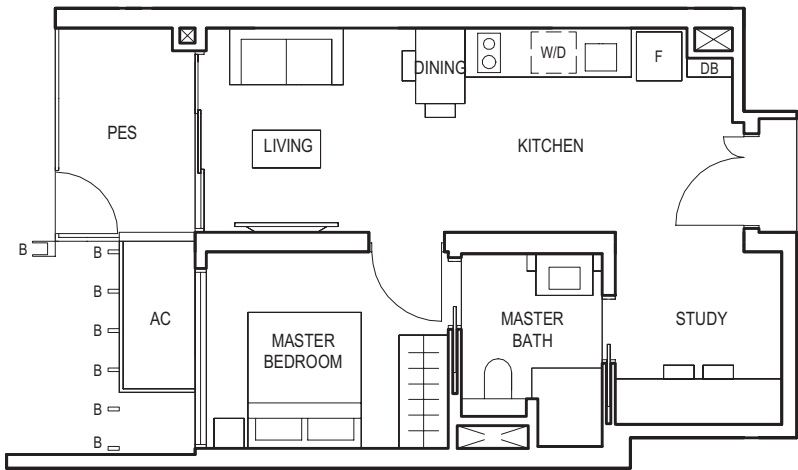
LEGEND:  
F - FRIDGE DB - DISTRIBUTION BOARD WC - WATER CLOSET W/D - WASHER CUM DRYER W - WASHER D - DRYER AC - AIRCON LEDGE

- \* VISUAL SCREENS ARE SUBJECT TO VISUAL CONTROL REQUIREMENT IMPOSED/APPROVED BY THE RELEVANT AUTHORITY.
- \* AREA INCLUDES AIRCON (AC) LEDGE, BALCONY AND PRIVATE ENCLOSED SPACE (PES).
- \* THE BALCONY/PRIVATE ENCLOSED SPACE (PES) SHALL NOT BE ENCLOSED UNLESS WITH THE APPROVED BALCONY/PES SCREEN. FOR AN ILLUSTRATION OF THE APPROVED BALCONY/PES SCREEN, PLEASE REFER TO THE DIAGRAM ANNEXED HERETO AS 'ANNEXURE 1'.

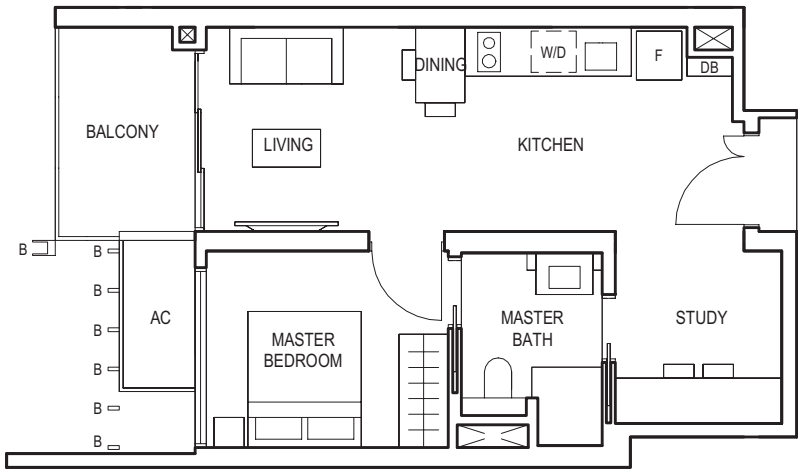


1-BEDROOM  
(with Study)

TYPE (1+1)a1  
#01-19  
51 sq m



TYPE (1+1)a  
#02-19 to #29-19  
51 sq m



FULL HEIGHT VERTICAL VISUAL SCREENS:  
A - OPENABLE SCREEN    B - FIXED FIN    C - FIXED SCREEN

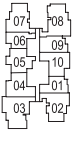
LEGEND:  
F - FRIDGE    DB - DISTRIBUTION BOARD    WC - WATER CLOSET    WD - WASHER CUM DRYER    W - WASHER    D - DRYER    AC - AIRCON LEDGE

- \* VISUAL SCREENS ARE SUBJECT TO VISUAL CONTROL REQUIREMENT IMPOSED/APPROVED BY THE RELEVANT AUTHORITY.
- \* AREA INCLUDES AIRCON (AC) LEDGE, BALCONY AND PRIVATE ENCLOSED SPACE (PES).
- \* THE BALCONY/PRIVATE ENCLOSED SPACE (PES) SHALL NOT BE ENCLOSED UNLESS WITH THE APPROVED BALCONY/PES SCREEN. FOR AN ILLUSTRATION OF THE APPROVED BALCONY/PES SCREEN, PLEASE REFER TO THE DIAGRAM ANNEXED HERETO AS 'ANNEXURE 1'.

BLOCK 10

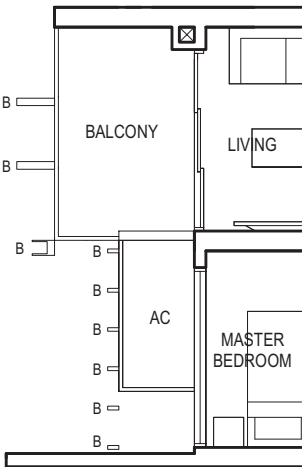


BLOCK 8

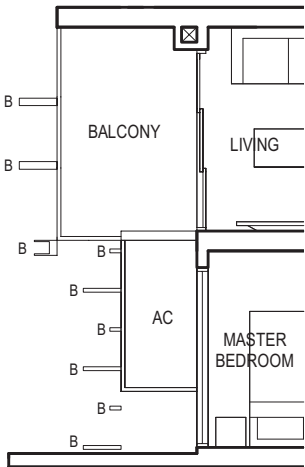


KEY PLAN

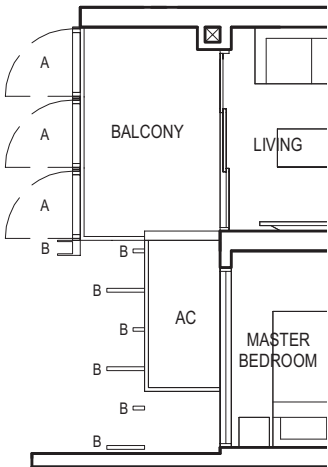
TYPE (1+1)a  
#02-19 to #29-19  
51 sq m



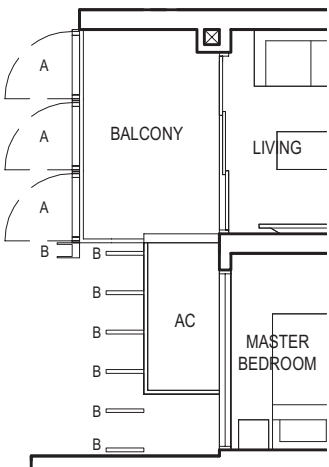
Applicable to unit  
#04-19 to #07-19 only



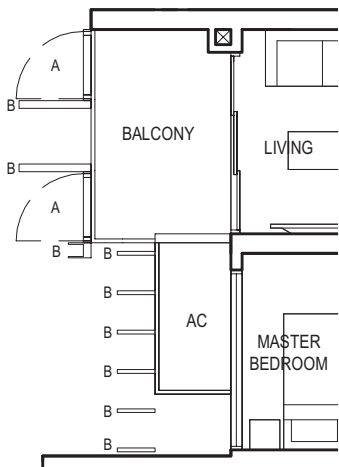
Applicable to unit  
#08-19 only



Applicable to unit  
#09-19 to #11-19 only



Applicable to unit  
#12-19 to #18-19, #28-19 & 29-19 only



Applicable to unit  
#19-19 to #27-19 only



FULL HEIGHT VERTICAL VISUAL SCREENS:  
A - OPENABLE SCREEN    B - FIXED FIN    C - FIXED SCREEN

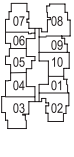
LEGEND:  
F - FRIDGE    DB - DISTRIBUTION BOARD    WC - WATER CLOSET    WD - WASHER CUM DRYER    W - WASHER    D - DRYER    AC - AIRCON LEDGE

- \* VISUAL SCREENS ARE SUBJECT TO VISUAL CONTROL REQUIREMENT IMPOSED/APPROVED BY THE RELEVANT AUTHORITY.
- \* AREA INCLUDES AIRCON (AC) LEDGE, BALCONY AND PRIVATE ENCLOSED SPACE (PES).
- \* THE BALCONY/PRIVATE ENCLOSED SPACE (PES) SHALL NOT BE ENCLOSED UNLESS WITH THE APPROVED BALCONY/PES SCREEN. FOR AN ILLUSTRATION OF THE APPROVED BALCONY/PES SCREEN, PLEASE REFER TO THE DIAGRAM ANNEXED HERETO AS 'ANNEXURE 1'.

BLOCK 10



BLOCK 8

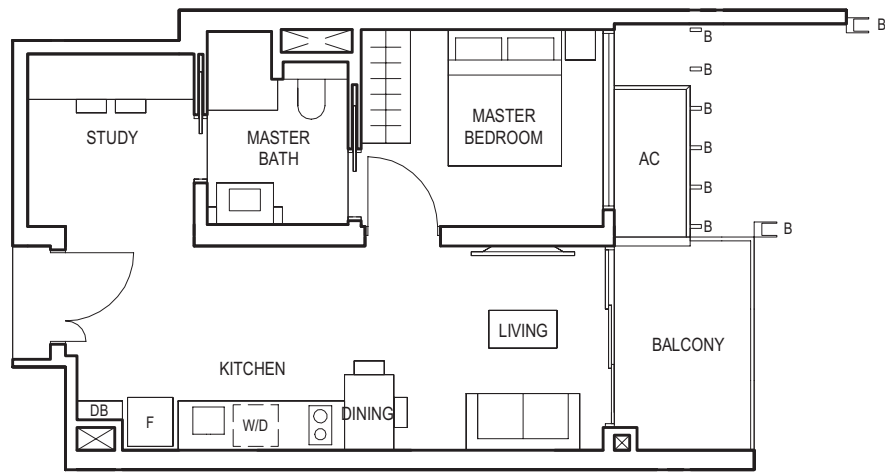


KEY PLAN



1-BEDROOM  
(with Study)

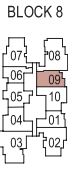
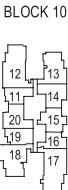
TYPE (1+1)a  
#03-09 to #29-09  
51 sq m



FULL HEIGHT VERTICAL VISUAL SCREENS:  
A - OPENABLE SCREEN    B - FIXED FIN    C - FIXED SCREEN

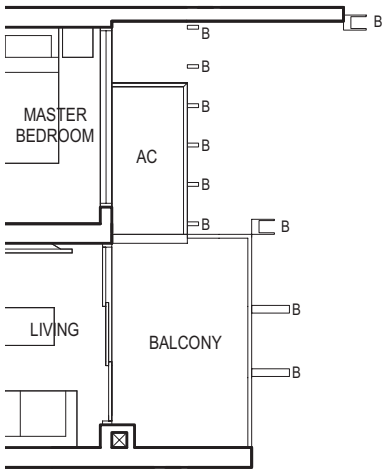
LEGEND:  
F - FRIDGE    DB - DISTRIBUTION BOARD    WC - WATER CLOSET    W/D - WASHER CUM DRYER    W - WASHER    D - DRYER    AC - AIRCON LEDGE

- \* VISUAL SCREENS ARE SUBJECT TO VISUAL CONTROL REQUIREMENT IMPOSED/APPROVED BY THE RELEVANT AUTHORITY.
- \* AREA INCLUDES AIRCON (AC) LEDGE, BALCONY AND PRIVATE ENCLOSED SPACE (PES).
- \* THE BALCONY/PRIVATE ENCLOSED SPACE (PES) SHALL NOT BE ENCLOSED UNLESS WITH THE APPROVED BALCONY/PES SCREEN. FOR AN ILLUSTRATION OF THE APPROVED BALCONY/PES SCREEN, PLEASE REFER TO THE DIAGRAM ANNEXED HERETO AS 'ANNEXURE 1'.

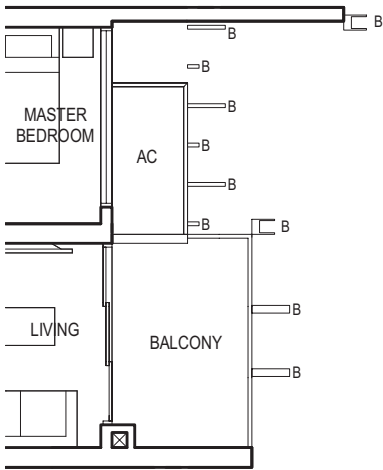


KEY PLAN

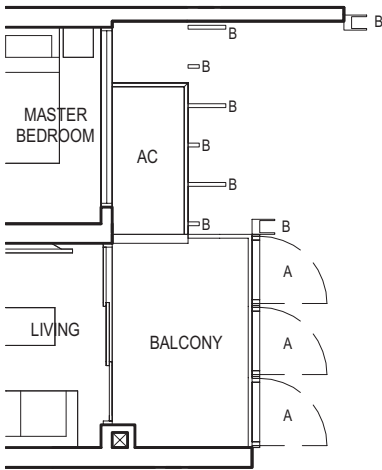
TYPE (1+1)a  
#03-09 to #29-09  
51 sq m



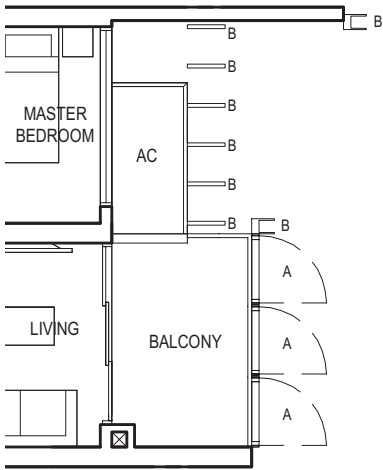
Applicable to unit  
#04-09 to #07-09 only



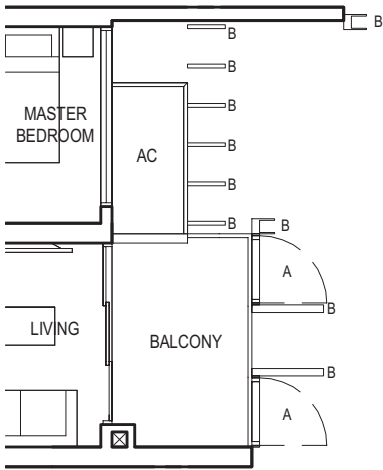
Applicable to unit  
#08-09 only



Applicable to unit  
#09-09 to #11-09 only



Applicable to unit  
#12-09 to #18-09, #28-09 & #29-09 only



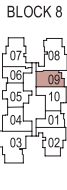
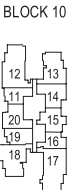
Applicable to unit  
#19-09 to #27-09 only



FULL HEIGHT VERTICAL VISUAL SCREENS:  
A - OPENABLE SCREEN    B - FIXED FIN    C - FIXED SCREEN

LEGEND:  
F - FRIDGE    DB - DISTRIBUTION BOARD    WC - WATER CLOSET    W/D - WASHER CUM DRYER    W - WASHER    D - DRYER    AC - AIRCON LEDGE

- \* VISUAL SCREENS ARE SUBJECT TO VISUAL CONTROL REQUIREMENT IMPOSED/APPROVED BY THE RELEVANT AUTHORITY.
- \* AREA INCLUDES AIRCON (AC) LEDGE, BALCONY AND PRIVATE ENCLOSED SPACE (PES).
- \* THE BALCONY/PRIVATE ENCLOSED SPACE (PES) SHALL NOT BE ENCLOSED UNLESS WITH THE APPROVED BALCONY/PES SCREEN. FOR AN ILLUSTRATION OF THE APPROVED BALCONY/PES SCREEN, PLEASE REFER TO THE DIAGRAM ANNEXED HERETO AS 'ANNEXURE 1'.

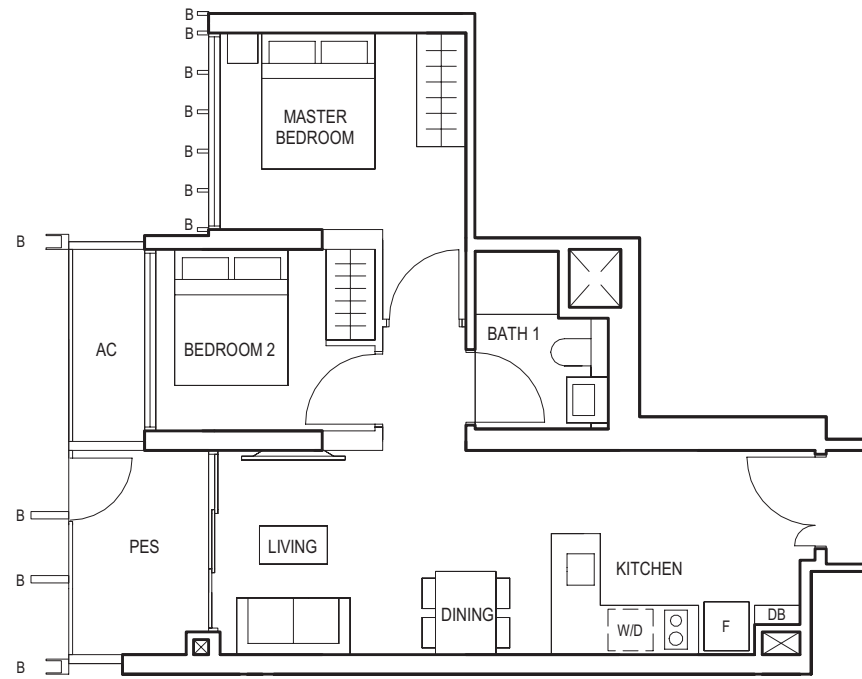


KEY PLAN

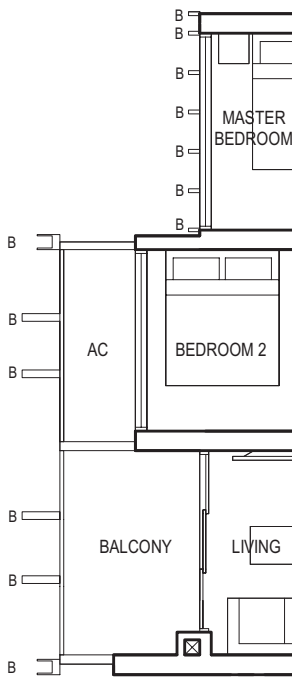
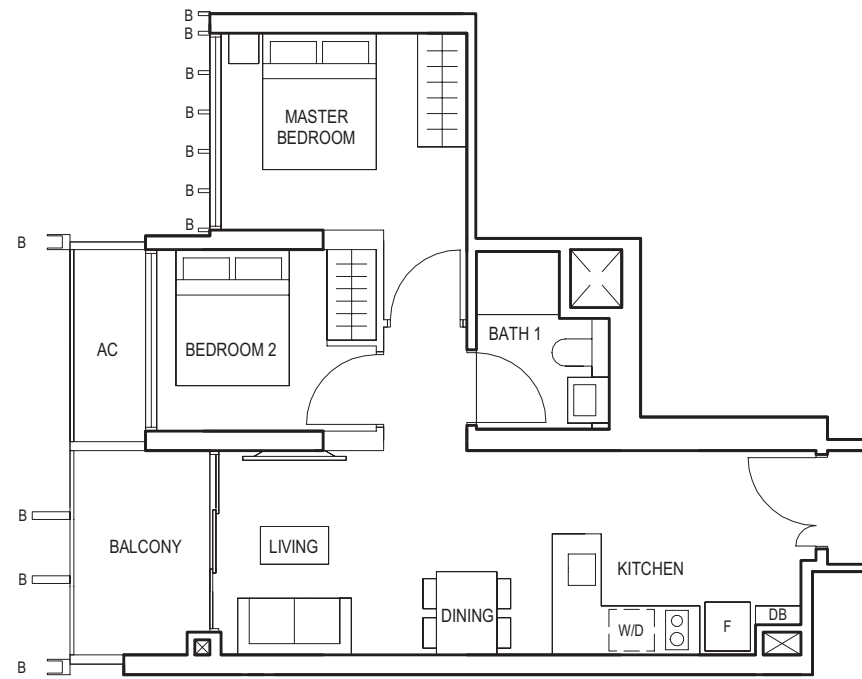


2-BEDROOM

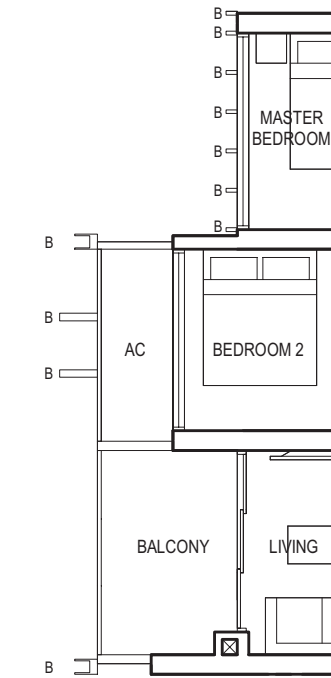
TYPE (2)a1  
#01-20  
59 sq m



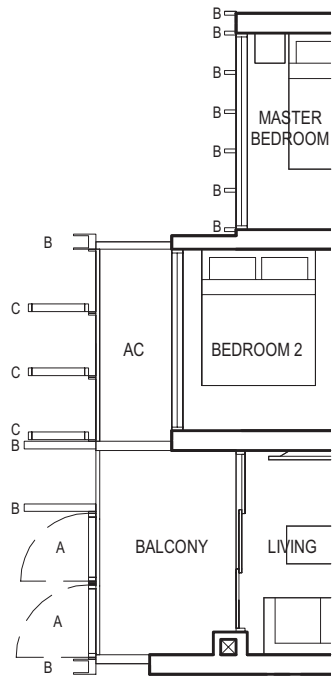
TYPE (2)a  
#02-20 to #29-20  
59 sq m



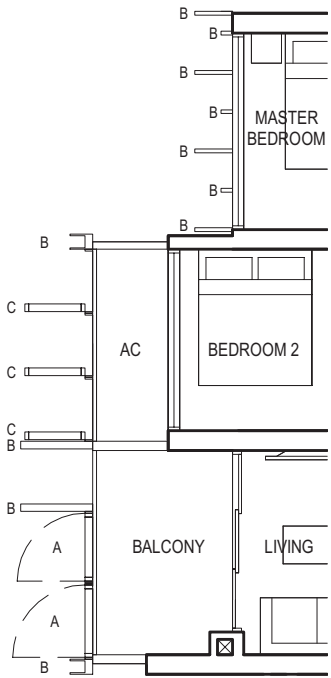
Applicable to unit  
#03-20 & #04-20 only



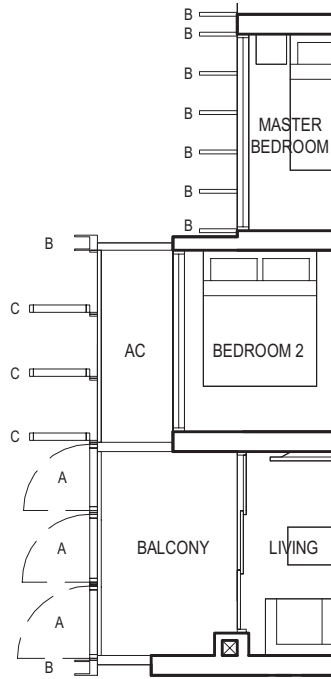
Applicable to unit  
#05-20 & #06-20 only



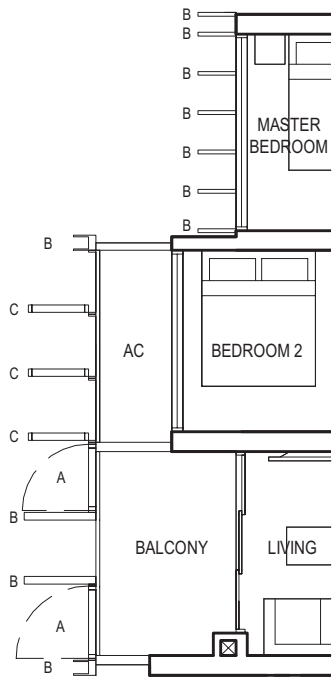
Applicable to unit  
#07-20 only



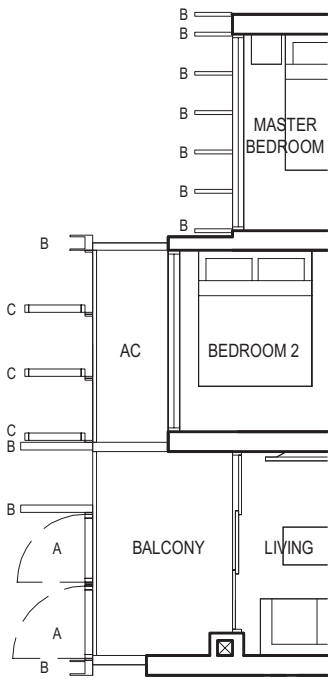
Applicable to unit  
#08-20 to #11-20 only



Applicable to unit  
#12-20, #20-20 & #21-20 only



Applicable to unit  
#13-20 to #19-20 only



Applicable to unit  
#22-20 to #29-20 only

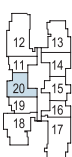


FULL HEIGHT VERTICAL VISUAL SCREENS:  
A - OPENABLE SCREEN    B - FIXED FIN    C - FIXED SCREEN

LEGEND:  
F - FRIDGE    DB - DISTRIBUTION BOARD    WC - WATER CLOSET    W/D - WASHER CUM DRYER    W - WASHER    D - DRYER    AC - AIRCON LEDGE

- \* VISUAL SCREENS ARE SUBJECT TO VISUAL CONTROL REQUIREMENT IMPOSED/APPROVED BY THE RELEVANT AUTHORITY.
- \* AREA INCLUDES AIRCON (AC) LEDGE, BALCONY AND PRIVATE ENCLOSED SPACE (PES).
- \* THE BALCONY/PRIVATE ENCLOSED SPACE (PES) SHALL NOT BE ENCLOSED UNLESS WITH THE APPROVED BALCONY/PES SCREEN. FOR AN ILLUSTRATION OF THE APPROVED BALCONY/PES SCREEN, PLEASE REFER TO THE DIAGRAM ANNEXED HERETO AS 'ANNEXURE 1'.

BLOCK 10



BLOCK 8



KEY PLAN

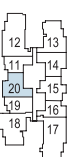


FULL HEIGHT VERTICAL VISUAL SCREENS:  
A - OPENABLE SCREEN    B - FIXED FIN    C - FIXED SCREEN

LEGEND:  
F - FRIDGE    DB - DISTRIBUTION BOARD    WC - WATER CLOSET    W/D - WASHER CUM DRYER    W - WASHER    D - DRYER    AC - AIRCON LEDGE

- \* VISUAL SCREENS ARE SUBJECT TO VISUAL CONTROL REQUIREMENT IMPOSED/APPROVED BY THE RELEVANT AUTHORITY.
- \* AREA INCLUDES AIRCON (AC) LEDGE, BALCONY AND PRIVATE ENCLOSED SPACE (PES).
- \* THE BALCONY/PRIVATE ENCLOSED SPACE (PES) SHALL NOT BE ENCLOSED UNLESS WITH THE APPROVED BALCONY/PES SCREEN. FOR AN ILLUSTRATION OF THE APPROVED BALCONY/PES SCREEN, PLEASE REFER TO THE DIAGRAM ANNEXED HERETO AS 'ANNEXURE 1'.

BLOCK 10



BLOCK 8



KEY PLAN

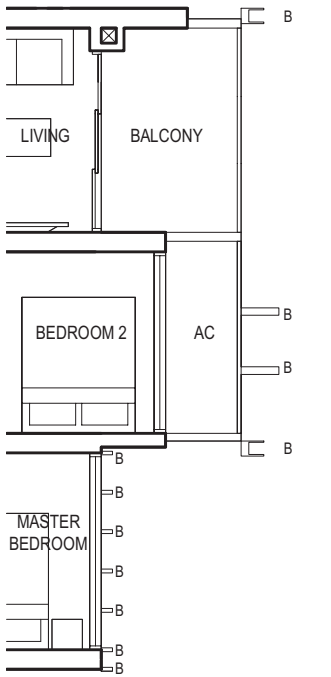
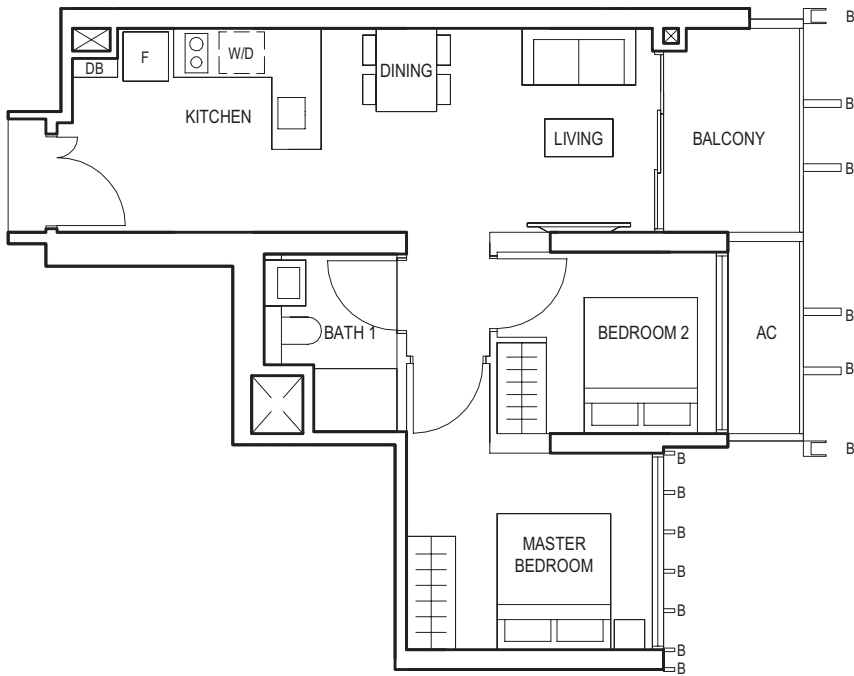
TYPE (2)a  
#02-20 to #29-20  
59 sq m



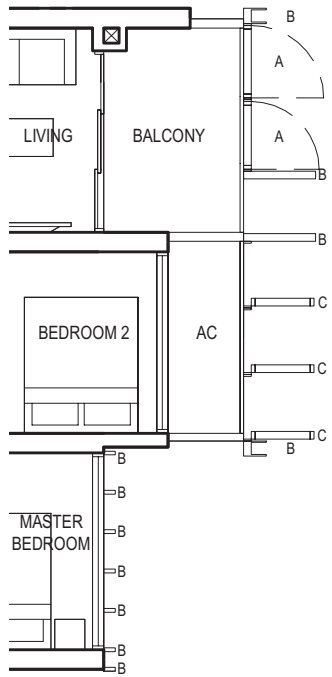
2-BEDROOM

TYPE (2)a  
#03-10 to #29-10  
59 sq m

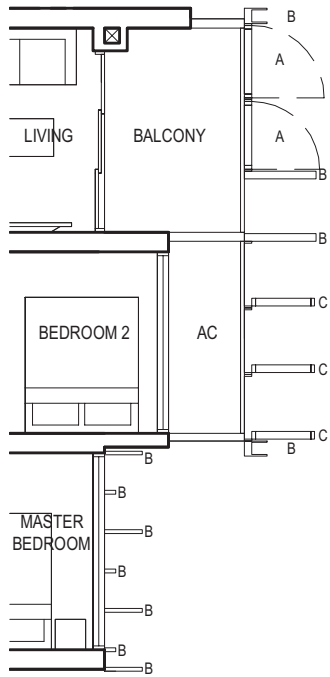
TYPE (2)a  
#03-10 to #29-10  
59 sq m



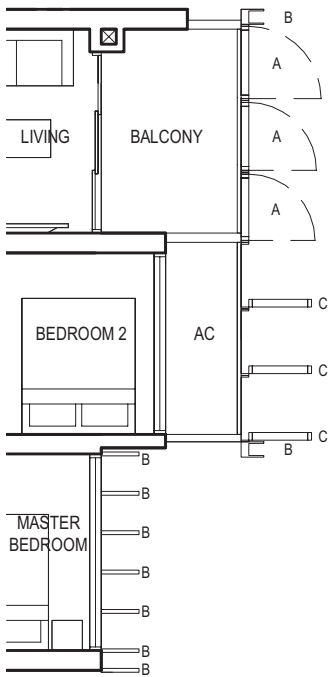
Applicable to unit  
#05-10 & #06-10 only



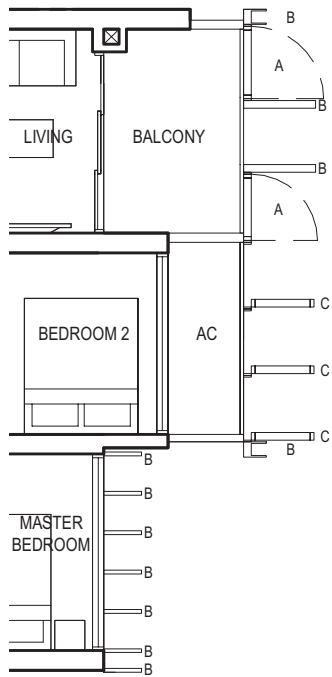
Applicable to unit  
#07-10 only



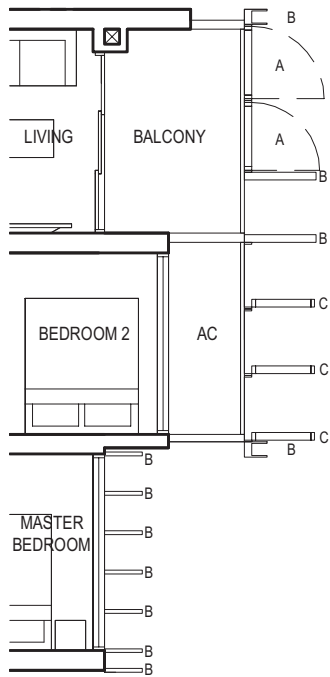
Applicable to unit  
#08-10 to #11-10 only



Applicable to unit  
#12-10, #20-10 & #21-10 only



Applicable to unit  
#13-10 to #19-10 only



Applicable to unit  
#22-10 to #29-10 only

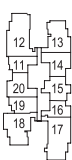


FULL HEIGHT VERTICAL VISUAL SCREENS:  
A - OPENABLE SCREEN    B - FIXED FIN    C - FIXED SCREEN

LEGEND:  
F - FRIDGE    DB - DISTRIBUTION BOARD    WC - WATER CLOSET    W/D - WASHER CUM DRYER    W - WASHER    D - DRYER    AC - AIRCON LEDGE

- \* VISUAL SCREENS ARE SUBJECT TO VISUAL CONTROL REQUIREMENT IMPOSED/APPROVED BY THE RELEVANT AUTHORITY.
- \* AREA INCLUDES AIRCON (AC) LEDGE, BALCONY AND PRIVATE ENCLOSED SPACE (PES).
- \* THE BALCONY/PRIVATE ENCLOSED SPACE (PES) SHALL NOT BE ENCLOSED UNLESS WITH THE APPROVED BALCONY/PES SCREEN. FOR AN ILLUSTRATION OF THE APPROVED BALCONY/PES SCREEN, PLEASE REFER TO THE DIAGRAM ANNEXED HERETO AS 'ANNEXURE 1'.

BLOCK 10



BLOCK 8



KEY PLAN



FULL HEIGHT VERTICAL VISUAL SCREENS:  
A - OPENABLE SCREEN    B - FIXED FIN    C - FIXED SCREEN

LEGEND:  
F - FRIDGE    DB - DISTRIBUTION BOARD    WC - WATER CLOSET    W/D - WASHER CUM DRYER    W - WASHER    D - DRYER    AC - AIRCON LEDGE

- \* VISUAL SCREENS ARE SUBJECT TO VISUAL CONTROL REQUIREMENT IMPOSED/APPROVED BY THE RELEVANT AUTHORITY.
- \* AREA INCLUDES AIRCON (AC) LEDGE, BALCONY AND PRIVATE ENCLOSED SPACE (PES).
- \* THE BALCONY/PRIVATE ENCLOSED SPACE (PES) SHALL NOT BE ENCLOSED UNLESS WITH THE APPROVED BALCONY/PES SCREEN. FOR AN ILLUSTRATION OF THE APPROVED BALCONY/PES SCREEN, PLEASE REFER TO THE DIAGRAM ANNEXED HERETO AS 'ANNEXURE 1'.

BLOCK 10



BLOCK 8

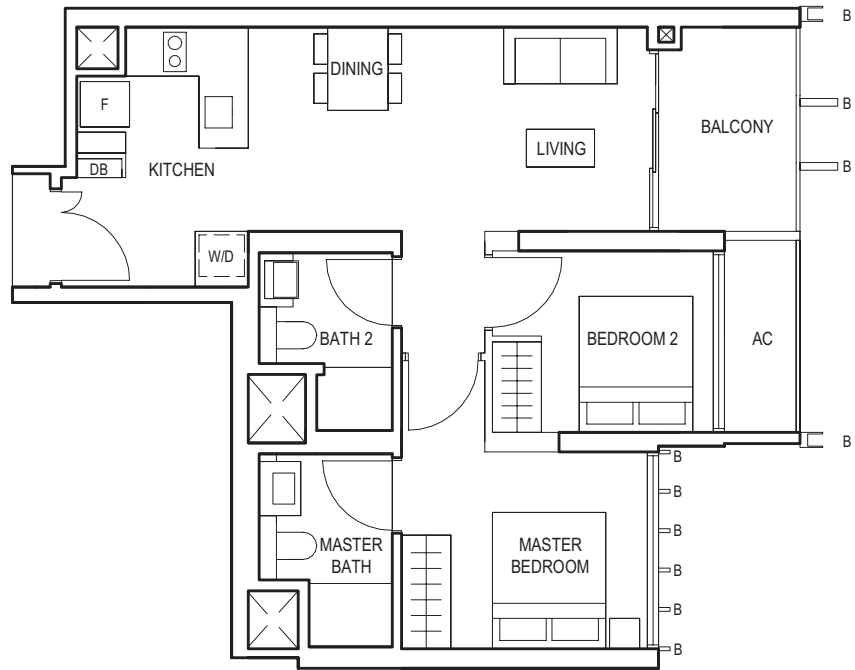


KEY PLAN



2-BEDROOM

TYPE (2P)a  
#02-14 to #29-14  
65 sq m



FULL HEIGHT VERTICAL VISUAL SCREENS:  
A - OPENABLE SCREEN    B - FIXED FIN    C - FIXED SCREEN

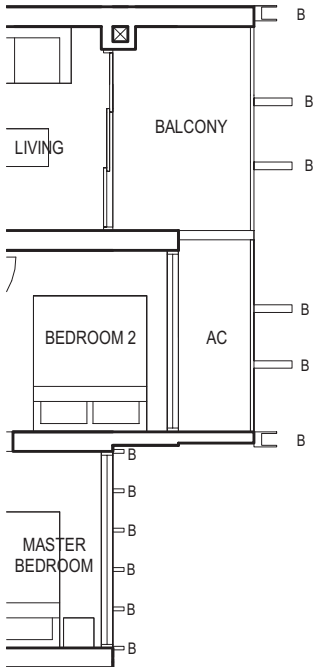
LEGEND:  
F - FRIDGE    DB - DISTRIBUTION BOARD    WC - WATER CLOSET    W/D - WASHER CUM DRYER    W - WASHER    D - DRYER    AC - AIRCON LEDGE

- \* VISUAL SCREENS ARE SUBJECT TO VISUAL CONTROL REQUIREMENT IMPOSED/APPROVED BY THE RELEVANT AUTHORITY.
- \* AREA INCLUDES AIRCON (AC) LEDGE, BALCONY AND PRIVATE ENCLOSED SPACE (PES).
- \* THE BALCONY/PRIVATE ENCLOSED SPACE (PES) SHALL NOT BE ENCLOSED UNLESS WITH THE APPROVED BALCONY/PES SCREEN. FOR AN ILLUSTRATION OF THE APPROVED BALCONY/PES SCREEN, PLEASE REFER TO THE DIAGRAM ANNEXED HERETO AS 'ANNEXURE 1'.

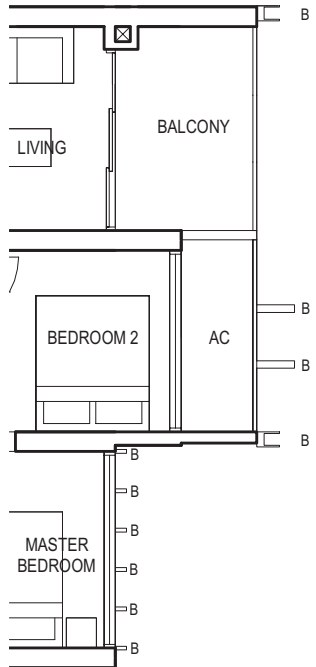


KEY PLAN

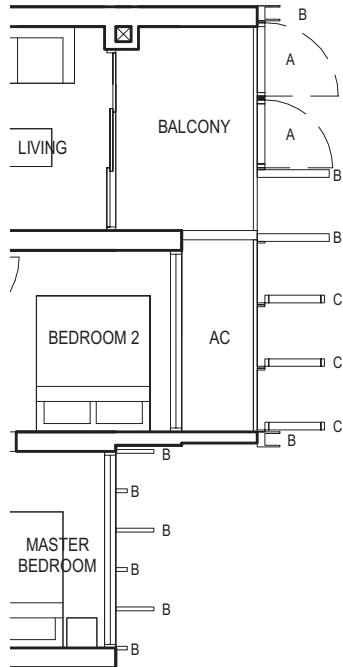
TYPE (2P)a  
#02-14 to #29-14  
65 sq m



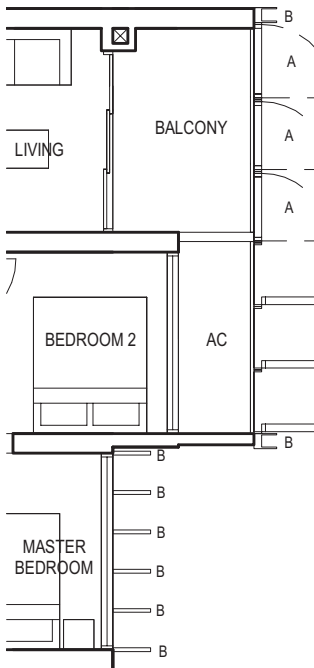
Applicable to unit  
#05-14 only



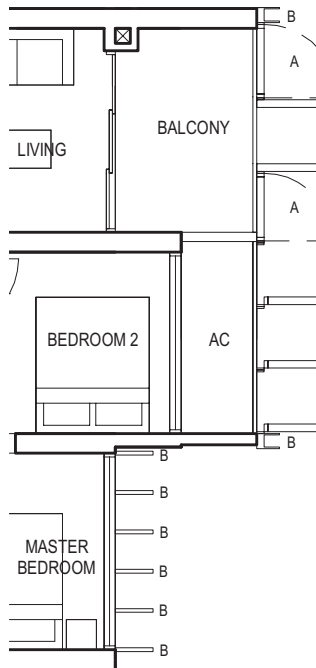
Applicable to unit  
#06-14 & #07-14 only



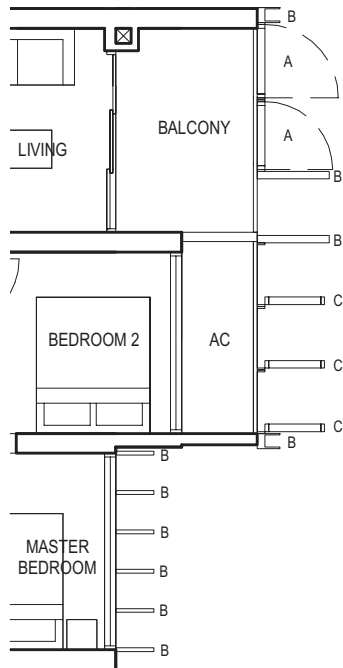
Applicable to unit  
#08-14 to #11-14 only



Applicable to unit  
#12-14, #20-14 & #21-14 only



Applicable to unit  
#13-14 to #19-14 only



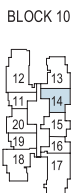
Applicable to unit  
#22-14 to #29-14 only



FULL HEIGHT VERTICAL VISUAL SCREENS:  
A - OPENABLE SCREEN    B - FIXED FIN    C - FIXED SCREEN

LEGEND:  
F - FRIDGE    DB - DISTRIBUTION BOARD    WC - WATER CLOSET    W/D - WASHER CUM DRYER    W - WASHER    D - DRYER    AC - AIRCON LEDGE

- \* VISUAL SCREENS ARE SUBJECT TO VISUAL CONTROL REQUIREMENT IMPOSED/APPROVED BY THE RELEVANT AUTHORITY.
- \* AREA INCLUDES AIRCON (AC) LEDGE, BALCONY AND PRIVATE ENCLOSED SPACE (PES).
- \* THE BALCONY/PRIVATE ENCLOSED SPACE (PES) SHALL NOT BE ENCLOSED UNLESS WITH THE APPROVED BALCONY/PES SCREEN. FOR AN ILLUSTRATION OF THE APPROVED BALCONY/PES SCREEN, PLEASE REFER TO THE DIAGRAM ANNEXED HERETO AS 'ANNEXURE 1'.



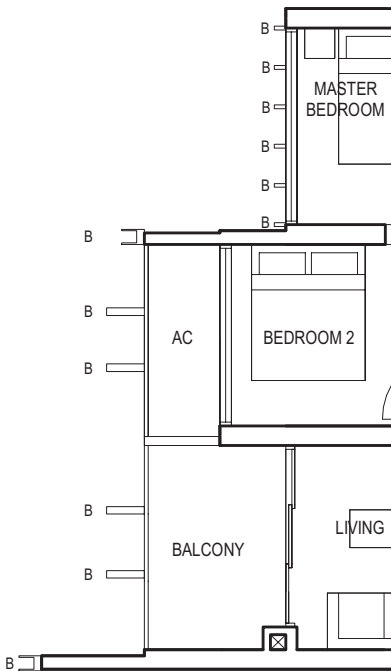
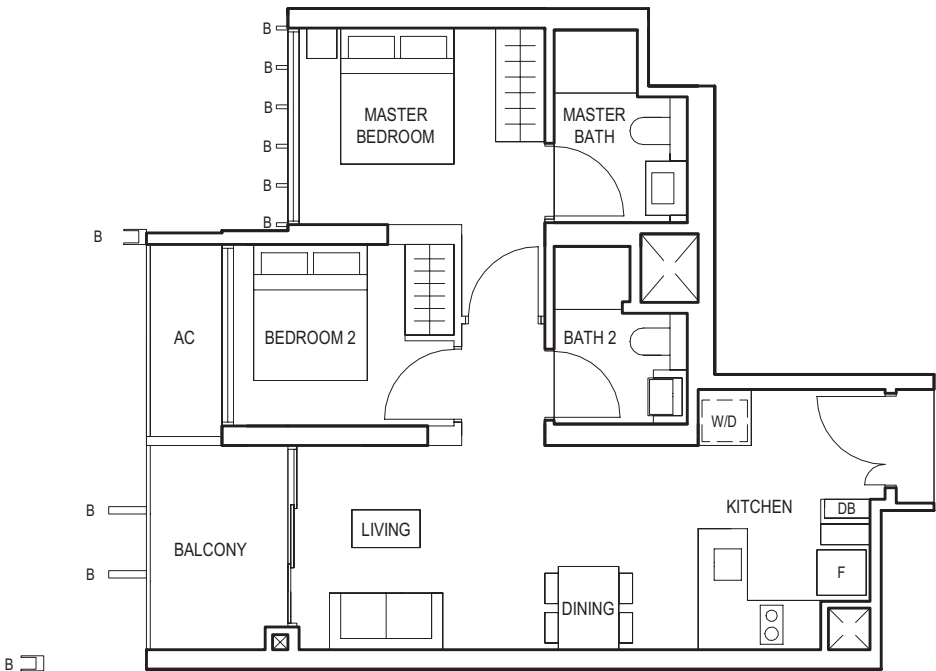
KEY PLAN



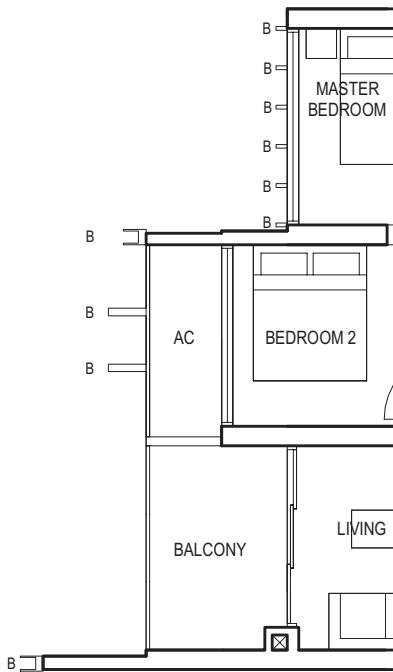
2-BEDROOM

TYPE (2P)a  
#02-04 to #29-04  
65 sq m

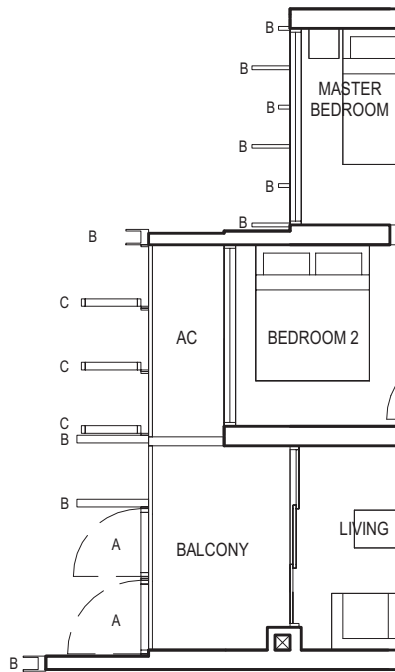
TYPE (2P)a  
#02-04 to #29-04  
65 sq m



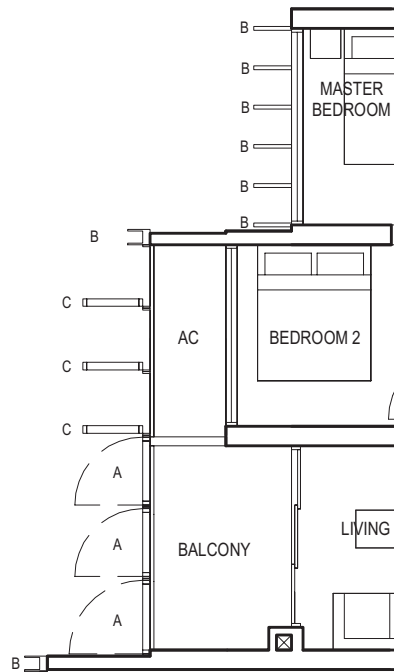
Applicable to unit  
#05-04 only



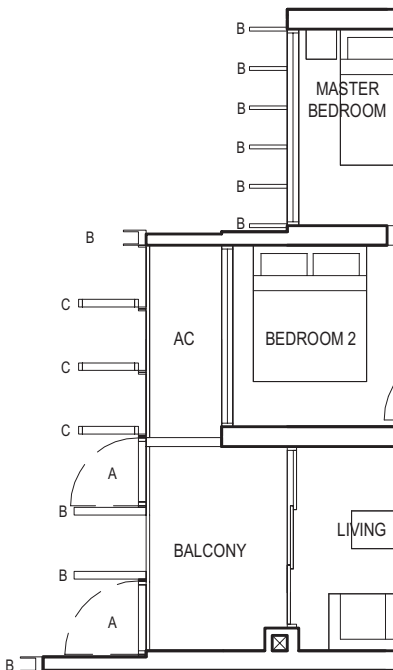
Applicable to unit  
#06-04 & #07-04 only



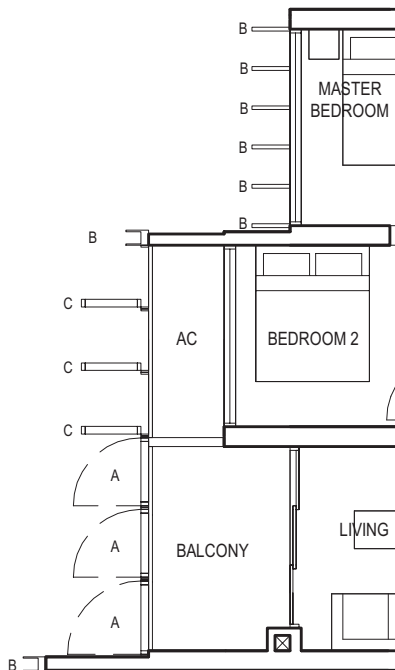
Applicable to unit  
#08-04 to #11-04 only



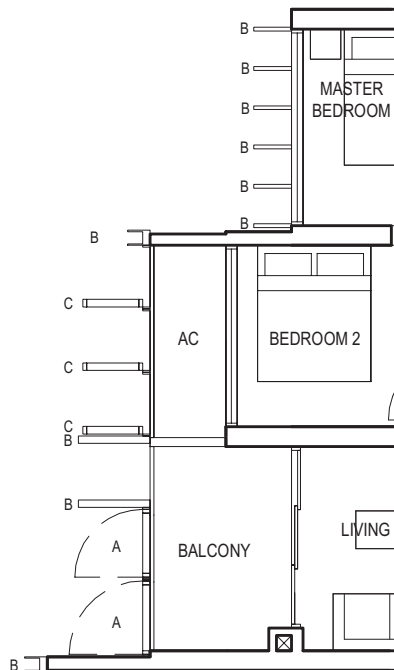
Applicable to unit  
#12-04 only



Applicable to unit  
#13-04 to #19-04 only



Applicable to unit  
#20-04 & #21-04 only



Applicable to unit  
#22-04 & #29-04 only



FULL HEIGHT VERTICAL VISUAL SCREENS:  
A - OPENABLE SCREEN    B - FIXED FIN    C - FIXED SCREEN

LEGEND:  
F - FRIDGE    DB - DISTRIBUTION BOARD    WC - WATER CLOSET    W/D - WASHER CUM DRYER    W - WASHER    D - DRYER    AC - AIRCON LEDGE

- \* VISUAL SCREENS ARE SUBJECT TO VISUAL CONTROL REQUIREMENT IMPOSED/APPROVED BY THE RELEVANT AUTHORITY.
- \* AREA INCLUDES AIRCON (AC) LEDGE, BALCONY AND PRIVATE ENCLOSED SPACE (PES).
- \* THE BALCONY/PRIVATE ENCLOSED SPACE (PES) SHALL NOT BE ENCLOSED UNLESS WITH THE APPROVED BALCONY/PES SCREEN. FOR AN ILLUSTRATION OF THE APPROVED BALCONY/PES SCREEN, PLEASE REFER TO THE DIAGRAM ANNEXED HERETO AS 'ANNEXURE 1'.



FULL HEIGHT VERTICAL VISUAL SCREENS:  
A - OPENABLE SCREEN    B - FIXED FIN    C - FIXED SCREEN

LEGEND:  
F - FRIDGE    DB - DISTRIBUTION BOARD    WC - WATER CLOSET    W/D - WASHER CUM DRYER    W - WASHER    D - DRYER    AC - AIRCON LEDGE

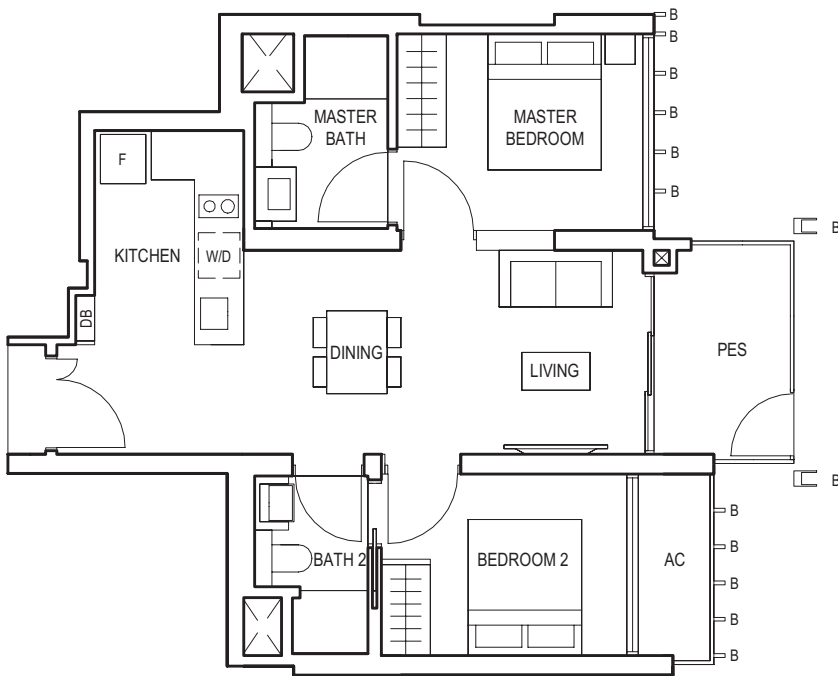
- \* VISUAL SCREENS ARE SUBJECT TO VISUAL CONTROL REQUIREMENT IMPOSED/APPROVED BY THE RELEVANT AUTHORITY.
- \* AREA INCLUDES AIRCON (AC) LEDGE, BALCONY AND PRIVATE ENCLOSED SPACE (PES).
- \* THE BALCONY/PRIVATE ENCLOSED SPACE (PES) SHALL NOT BE ENCLOSED UNLESS WITH THE APPROVED BALCONY/PES SCREEN. FOR AN ILLUSTRATION OF THE APPROVED BALCONY/PES SCREEN, PLEASE REFER TO THE DIAGRAM ANNEXED HERETO AS 'ANNEXURE 1'.



2-BEDROOM

TYPE (2P)b1

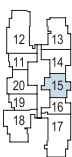
#01-15  
64 sq m



FULL HEIGHT VERTICAL VISUAL SCREENS:  
A - OPENABLE SCREEN    B - FIXED FIN    C - FIXED SCREEN

- LEGEND:  
F - FRIDGE   DB - DISTRIBUTION BOARD   WC - WATER CLOSET   W/D - WASHER CUM DRYER   W - WASHER   D - DRYER   AC - AIRCON LEDGE
- \* VISUAL SCREENS ARE SUBJECT TO VISUAL CONTROL REQUIREMENT IMPOSED/APPROVED BY THE RELEVANT AUTHORITY.
  - \* AREA INCLUDES AIRCON (AC) LEDGE, BALCONY AND PRIVATE ENCLOSED SPACE (PES).
  - \* THE BALCONY/PRIVATE ENCLOSED SPACE (PES) SHALL NOT BE ENCLOSED UNLESS WITH THE APPROVED BALCONY/PES SCREEN. FOR AN ILLUSTRATION OF THE APPROVED BALCONY/PES SCREEN, PLEASE REFER TO THE DIAGRAM ANNEXED HERETO AS 'ANNEXURE 1'.

BLOCK 10



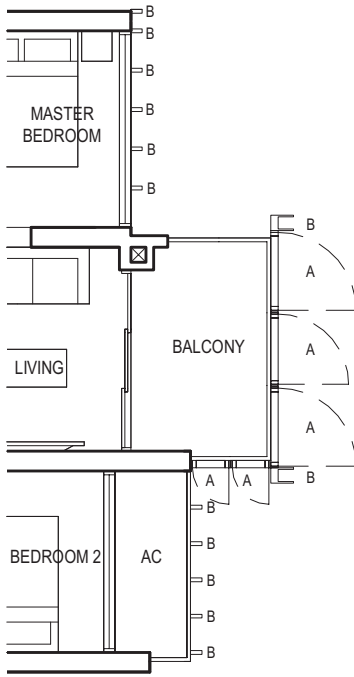
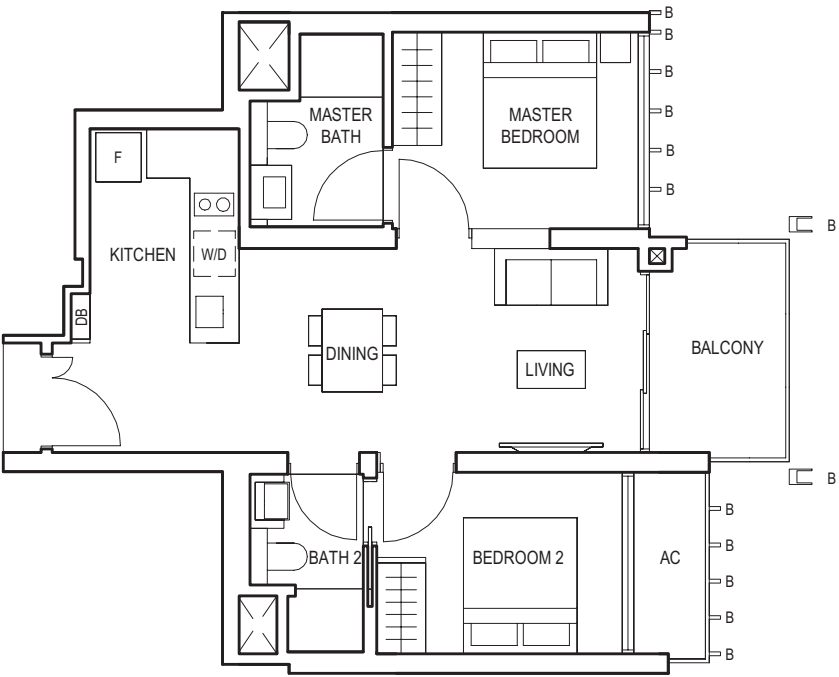
BLOCK 8



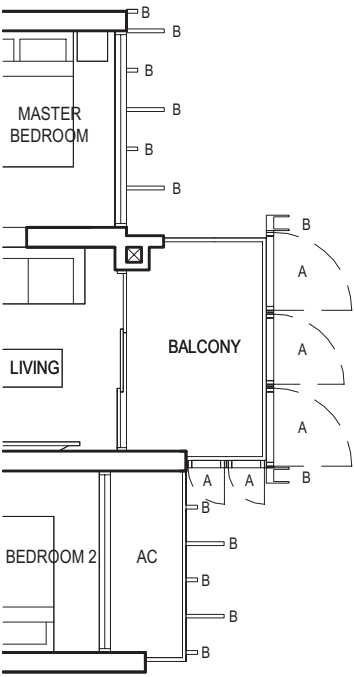
KEY PLAN

TYPE (2P)b

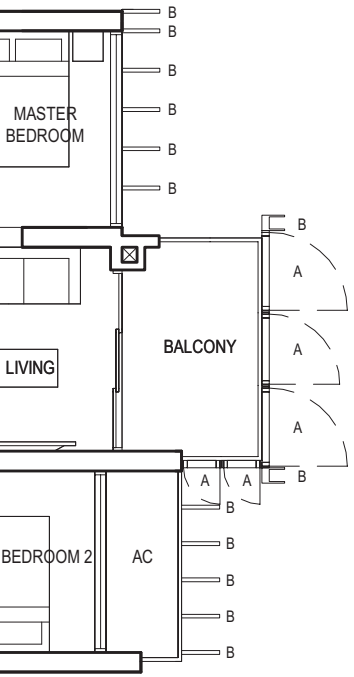
#02-15 to #29-15  
64 sq m



Applicable to unit  
#07-15 only



Applicable to unit  
#08-15 to #11-15 only



Applicable to unit  
#12-15 to #29-15 only

FULL HEIGHT VERTICAL VISUAL SCREENS:  
A - OPENABLE SCREEN    B - FIXED FIN    C - FIXED SCREEN

- LEGEND:  
F - FRIDGE   DB - DISTRIBUTION BOARD   WC - WATER CLOSET   W/D - WASHER CUM DRYER   W - WASHER   D - DRYER   AC - AIRCON LEDGE
- \* VISUAL SCREENS ARE SUBJECT TO VISUAL CONTROL REQUIREMENT IMPOSED/APPROVED BY THE RELEVANT AUTHORITY.
  - \* AREA INCLUDES AIRCON (AC) LEDGE, BALCONY AND PRIVATE ENCLOSED SPACE (PES).
  - \* THE BALCONY/PRIVATE ENCLOSED SPACE (PES) SHALL NOT BE ENCLOSED UNLESS WITH THE APPROVED BALCONY/PES SCREEN. FOR AN ILLUSTRATION OF THE APPROVED BALCONY/PES SCREEN, PLEASE REFER TO THE DIAGRAM ANNEXED HERETO AS 'ANNEXURE 1'.

BLOCK 10



BLOCK 8

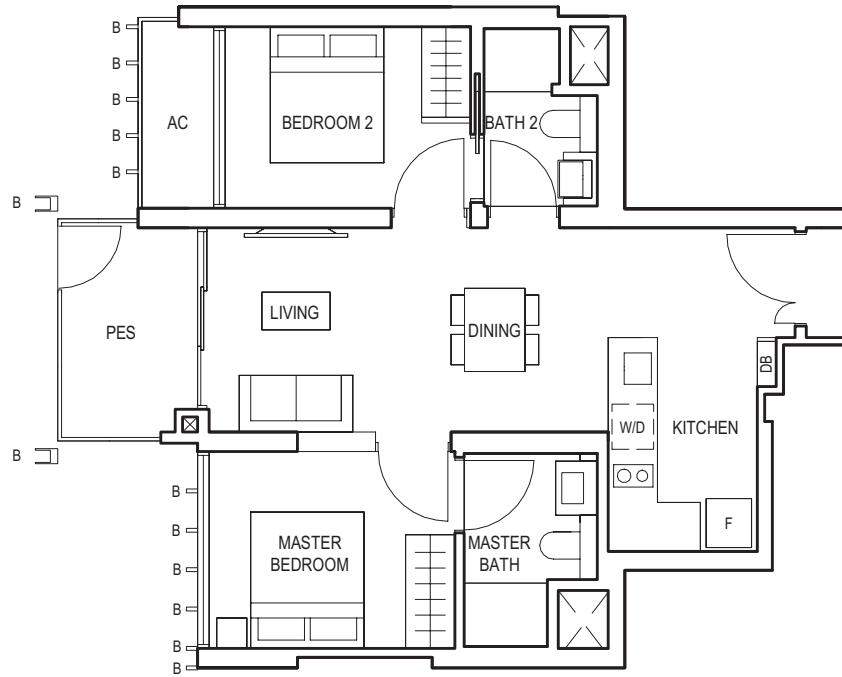


KEY PLAN



2-BEDROOM

TYPE (2P)b1  
#01-05  
64 sq m



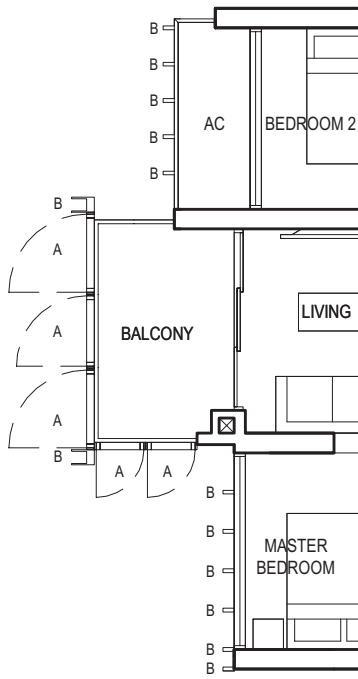
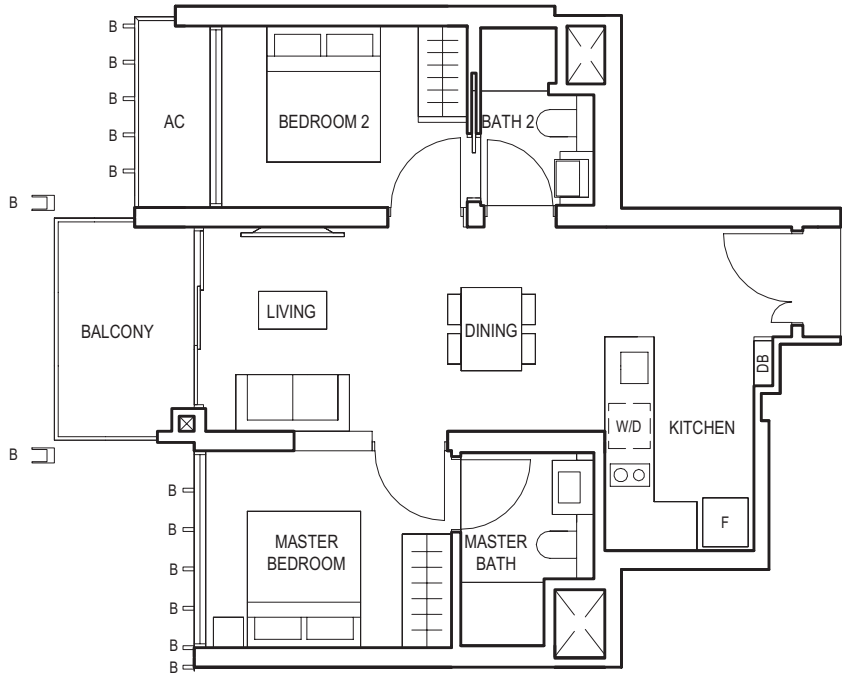
FULL HEIGHT VERTICAL VISUAL SCREENS:  
A - OPENABLE SCREEN    B - FIXED FIN    C - FIXED SCREEN

LEGEND:  
F - FRIDGE    DB - DISTRIBUTION BOARD    WC - WATER CLOSET    W/D - WASHER CUM DRYER    W - WASHER    D - DRYER    AC - AIRCON LEDGE

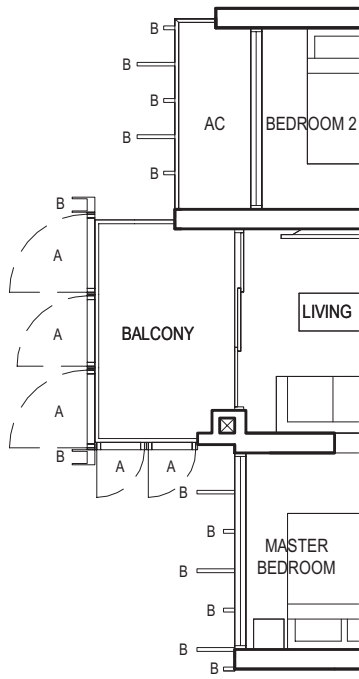
- \* VISUAL SCREENS ARE SUBJECT TO VISUAL CONTROL REQUIREMENT IMPOSED/APPROVED BY THE RELEVANT AUTHORITY.
- \* AREA INCLUDES AIRCON (AC) LEDGE, BALCONY AND PRIVATE ENCLOSED SPACE (PES).
- \* THE BALCONY/PRIVATE ENCLOSED SPACE (PES) SHALL NOT BE ENCLOSED UNLESS WITH THE APPROVED BALCONY/PES SCREEN. FOR AN ILLUSTRATION OF THE APPROVED BALCONY/PES SCREEN, PLEASE REFER TO THE DIAGRAM ANNEXED HERETO AS 'ANNEXURE 1'.



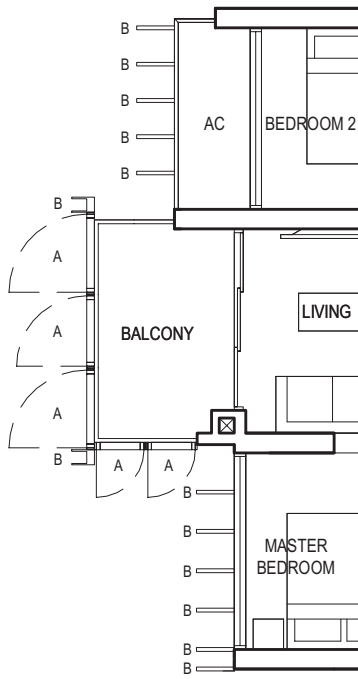
TYPE (2P)b  
#02-05 to #29-05  
64 sq m



Applicable to unit  
#07-05 only



Applicable to unit  
#08-05 to #11-05 only



Applicable to unit  
#12-05 to #29-05 only



FULL HEIGHT VERTICAL VISUAL SCREENS:  
A - OPENABLE SCREEN    B - FIXED FIN    C - FIXED SCREEN

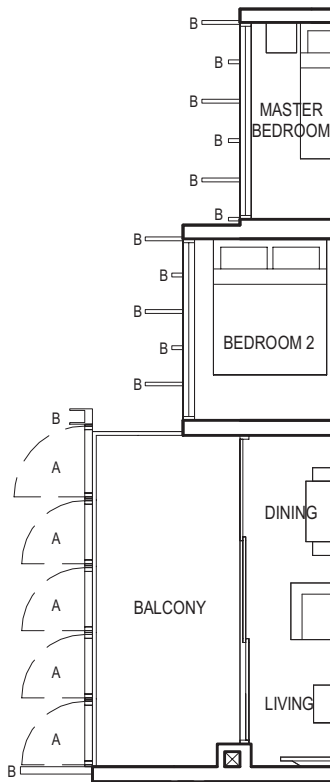
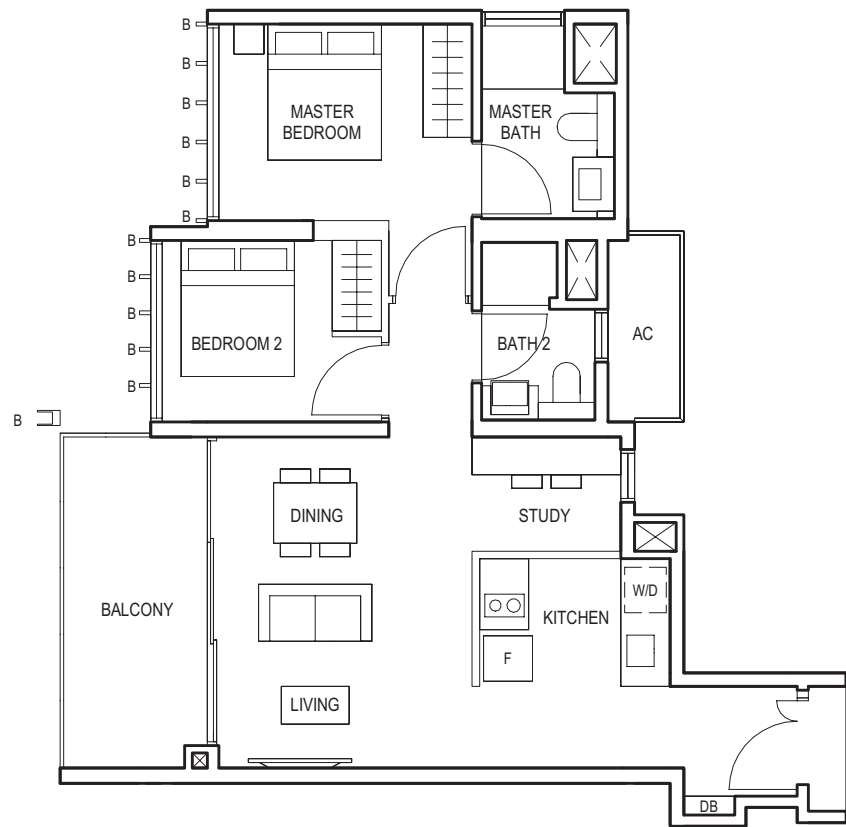
LEGEND:  
F - FRIDGE    DB - DISTRIBUTION BOARD    WC - WATER CLOSET    W/D - WASHER CUM DRYER    W - WASHER    D - DRYER    AC - AIRCON LEDGE

- \* VISUAL SCREENS ARE SUBJECT TO VISUAL CONTROL REQUIREMENT IMPOSED/APPROVED BY THE RELEVANT AUTHORITY.
- \* AREA INCLUDES AIRCON (AC) LEDGE, BALCONY AND PRIVATE ENCLOSED SPACE (PES).
- \* THE BALCONY/PRIVATE ENCLOSED SPACE (PES) SHALL NOT BE ENCLOSED UNLESS WITH THE APPROVED BALCONY/PES SCREEN. FOR AN ILLUSTRATION OF THE APPROVED BALCONY/PES SCREEN, PLEASE REFER TO THE DIAGRAM ANNEXED HERETO AS 'ANNEXURE 1'.

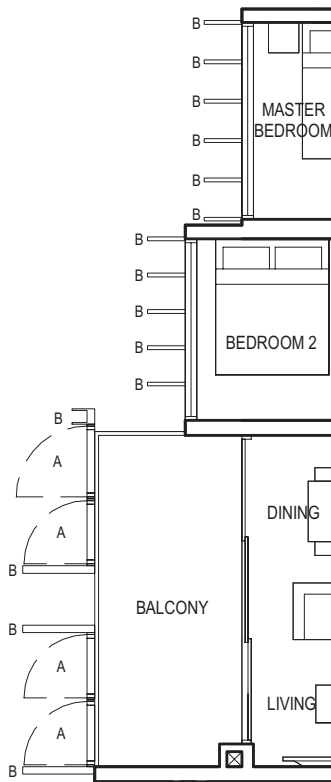


2-BEDROOM  
(with Study)

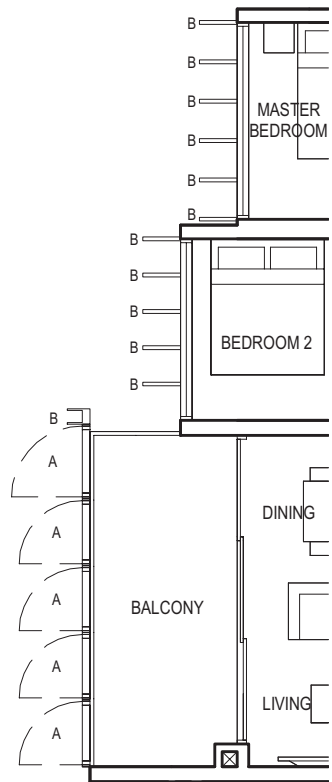
TYPE (2+1)a  
#03-07 to #29-07  
73 sq m



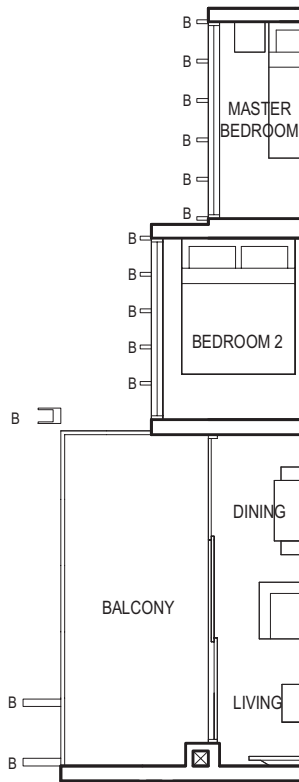
Applicable to unit  
#09-07 to #11-07 only



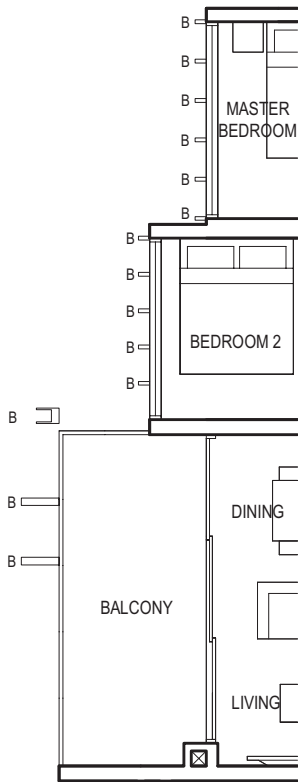
Applicable to unit  
#12-07 to #15-07 only



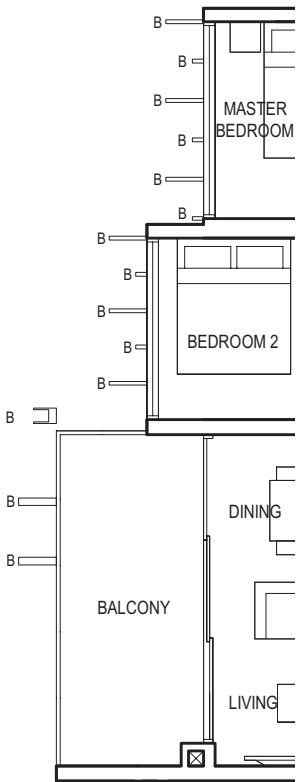
Applicable to unit  
#16-07 only



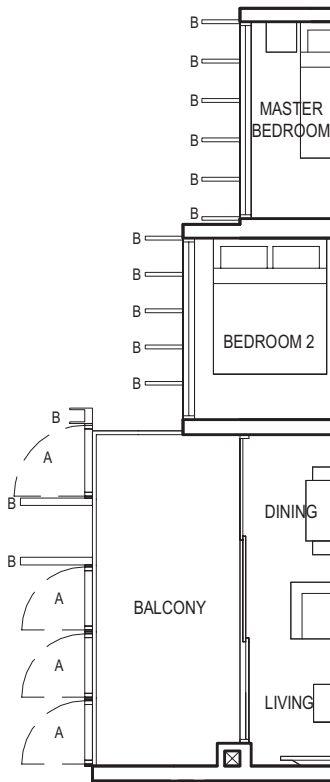
Applicable to unit  
#04-07 & #05-07 only



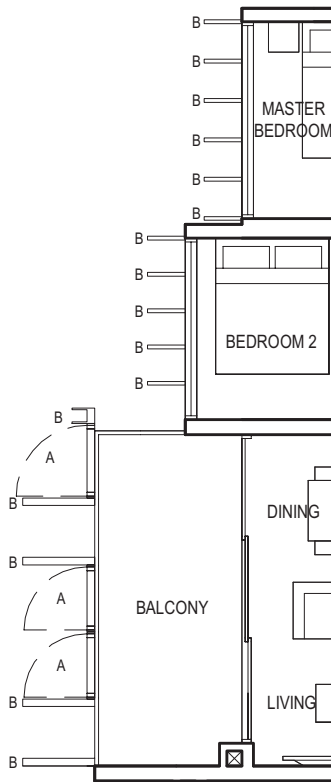
Applicable to unit  
#06-07 & #07-07 only



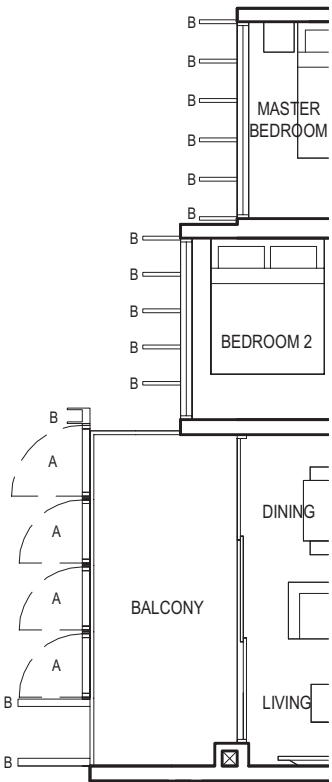
Applicable to unit  
#08-07 only



Applicable to unit  
#17-07 to #20-07 & #29-07 only



Applicable to unit  
#21-07, #22-07 &  
#25-07 to #28-07 only



Applicable to unit  
#23-07 & #24-07 only



FULL HEIGHT VERTICAL VISUAL SCREENS:  
A - OPENABLE SCREEN    B - FIXED FIN    C - FIXED SCREEN

LEGEND:  
F - FRIDGE    DB - DISTRIBUTION BOARD    WC - WATER CLOSET    W/D - WASHER CUM DRYER    W - WASHER    D - DRYER    AC - AIRCON LEDGE

- \* VISUAL SCREENS ARE SUBJECT TO VISUAL CONTROL REQUIREMENT IMPOSED/APPROVED BY THE RELEVANT AUTHORITY.
- \* AREA INCLUDES AIRCON (AC) LEDGE, BALCONY AND PRIVATE ENCLOSED SPACE (PES).
- \* THE BALCONY/PRIVATE ENCLOSED SPACE (PES) SHALL NOT BE ENCLOSED UNLESS WITH THE APPROVED BALCONY/PES SCREEN. FOR AN ILLUSTRATION OF THE APPROVED BALCONY/PES SCREEN, PLEASE REFER TO THE DIAGRAM ANNEXED HERETO AS 'ANNEXURE 1'.



FULL HEIGHT VERTICAL VISUAL SCREENS:  
A - OPENABLE SCREEN    B - FIXED FIN    C - FIXED SCREEN

LEGEND:  
F - FRIDGE    DB - DISTRIBUTION BOARD    WC - WATER CLOSET    W/D - WASHER CUM DRYER    W - WASHER    D - DRYER    AC - AIRCON LEDGE

- \* VISUAL SCREENS ARE SUBJECT TO VISUAL CONTROL REQUIREMENT IMPOSED/APPROVED BY THE RELEVANT AUTHORITY.
- \* AREA INCLUDES AIRCON (AC) LEDGE, BALCONY AND PRIVATE ENCLOSED SPACE (PES).
- \* THE BALCONY/PRIVATE ENCLOSED SPACE (PES) SHALL NOT BE ENCLOSED UNLESS WITH THE APPROVED BALCONY/PES SCREEN. FOR AN ILLUSTRATION OF THE APPROVED BALCONY/PES SCREEN, PLEASE REFER TO THE DIAGRAM ANNEXED HERETO AS 'ANNEXURE 1'.

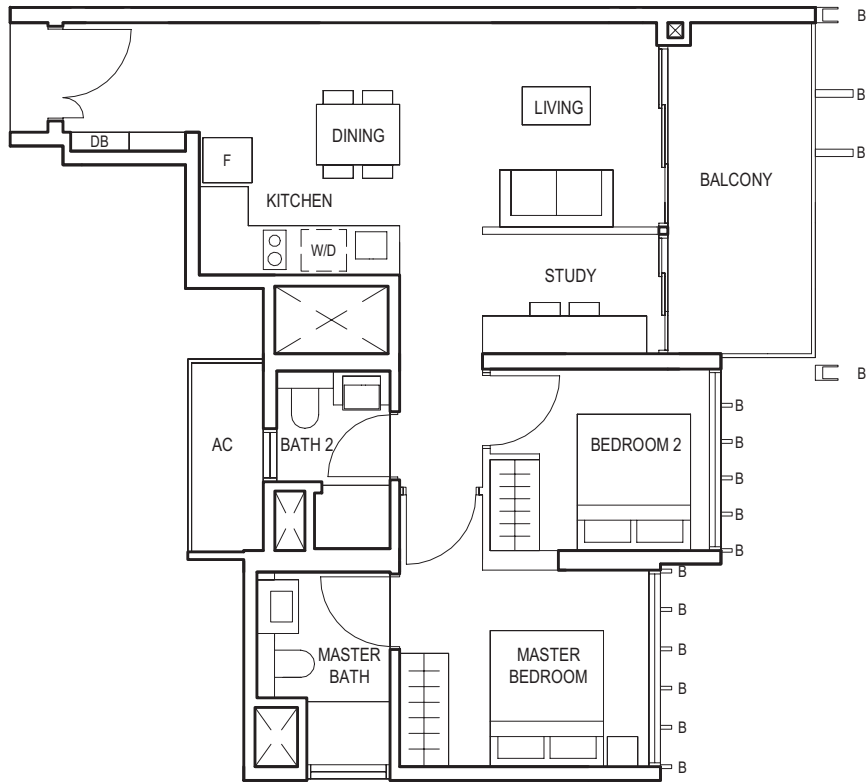


TYPE (2+1)a  
#03-07 to #29-07  
73 sq m



2-BEDROOM  
(with Study)

TYPE (2+1)b  
#03-02 to #29-02  
72 sq m

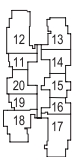


FULL HEIGHT VERTICAL VISUAL SCREENS:  
A - OPENABLE SCREEN    B - FIXED FIN    C - FIXED SCREEN

LEGEND:  
F - FRIDGE    DB - DISTRIBUTION BOARD    WC - WATER CLOSET    W/D - WASHER CUM DRYER    W - WASHER    D - DRYER    AC - AIRCON LEDGE

- \* VISUAL SCREENS ARE SUBJECT TO VISUAL CONTROL REQUIREMENT IMPOSED/APPROVED BY THE RELEVANT AUTHORITY.
- \* AREA INCLUDES AIRCON (AC) LEDGE, BALCONY AND PRIVATE ENCLOSED SPACE (PES).
- \* THE BALCONY/PRIVATE ENCLOSED SPACE (PES) SHALL NOT BE ENCLOSED UNLESS WITH THE APPROVED BALCONY/PES SCREEN. FOR AN ILLUSTRATION OF THE APPROVED BALCONY/PES SCREEN, PLEASE REFER TO THE DIAGRAM ANNEXED HERETO AS 'ANNEXURE 1'.

BLOCK 10

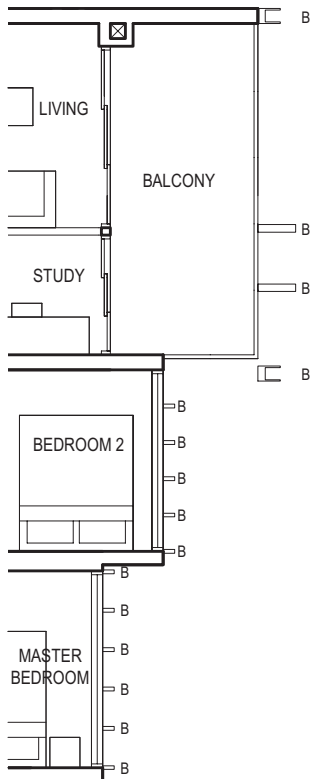


BLOCK 8

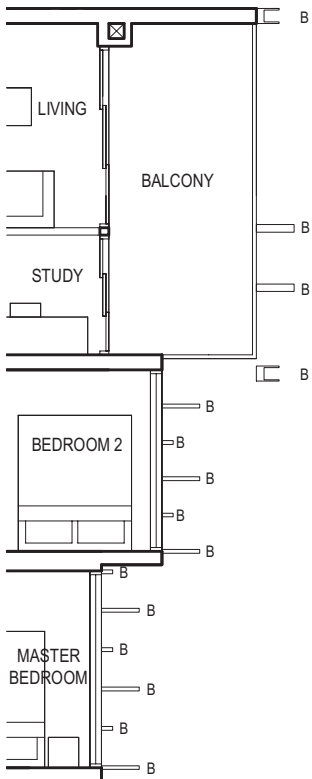


KEY PLAN

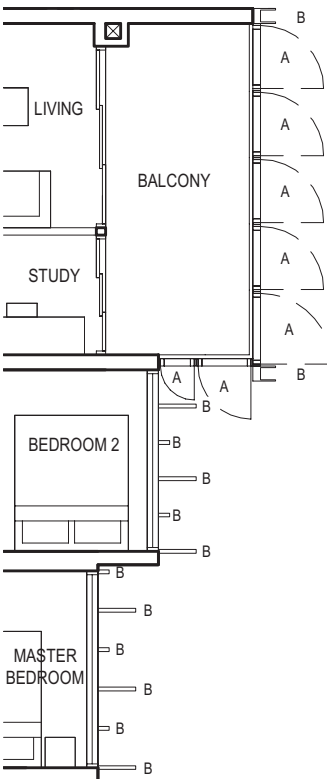
TYPE (2+1)b  
#03-02 to #29-02  
72 sq m



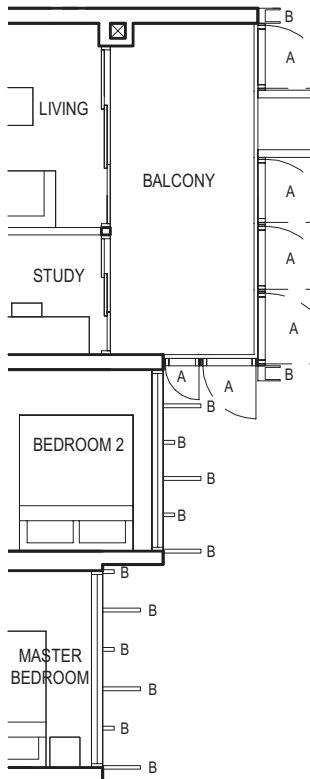
Applicable to unit  
#06-02 & #07-02 only



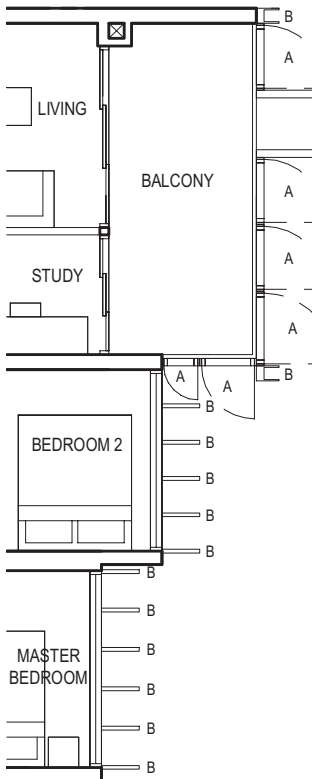
Applicable to unit  
#08-02 only



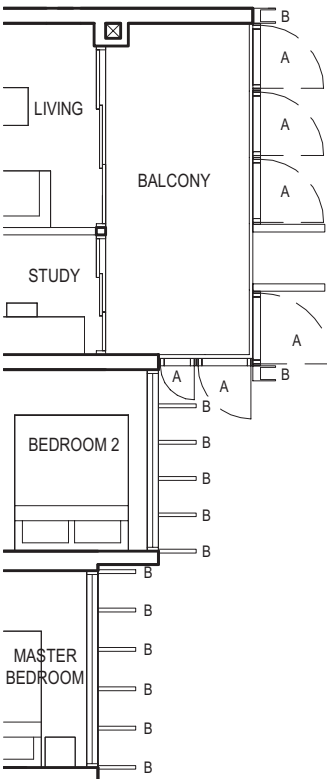
Applicable to unit  
#09-02 & #10-02 only



Applicable to unit  
#11-02 only



Applicable to unit  
#12-02 to #16-02 &  
#24-02 to #29-02 only



Applicable to unit  
#17-02 to #23-02 only



FULL HEIGHT VERTICAL VISUAL SCREENS:  
A - OPENABLE SCREEN    B - FIXED FIN    C - FIXED SCREEN

LEGEND:  
F - FRIDGE    DB - DISTRIBUTION BOARD    WC - WATER CLOSET    W/D - WASHER CUM DRYER    W - WASHER    D - DRYER    AC - AIRCON LEDGE

- \* VISUAL SCREENS ARE SUBJECT TO VISUAL CONTROL REQUIREMENT IMPOSED/APPROVED BY THE RELEVANT AUTHORITY.
- \* AREA INCLUDES AIRCON (AC) LEDGE, BALCONY AND PRIVATE ENCLOSED SPACE (PES).
- \* THE BALCONY/PRIVATE ENCLOSED SPACE (PES) SHALL NOT BE ENCLOSED UNLESS WITH THE APPROVED BALCONY/PES SCREEN. FOR AN ILLUSTRATION OF THE APPROVED BALCONY/PES SCREEN, PLEASE REFER TO THE DIAGRAM ANNEXED HERETO AS 'ANNEXURE 1'.

BLOCK 10



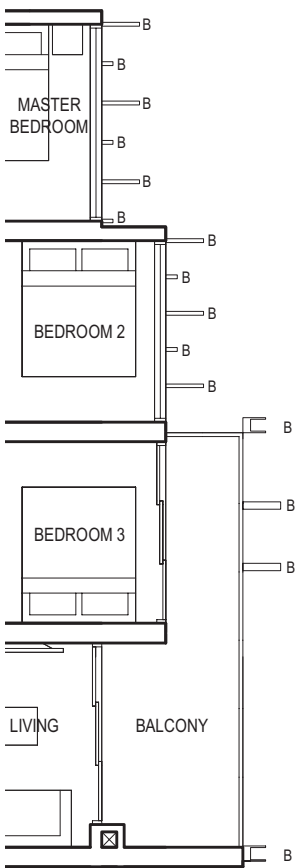
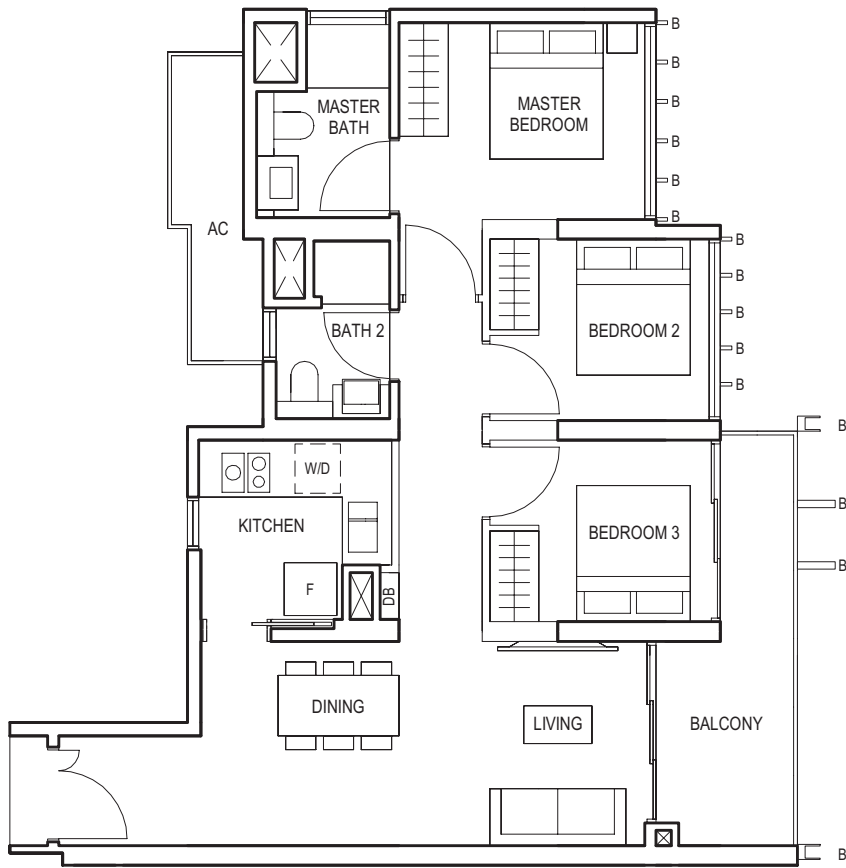
BLOCK 8



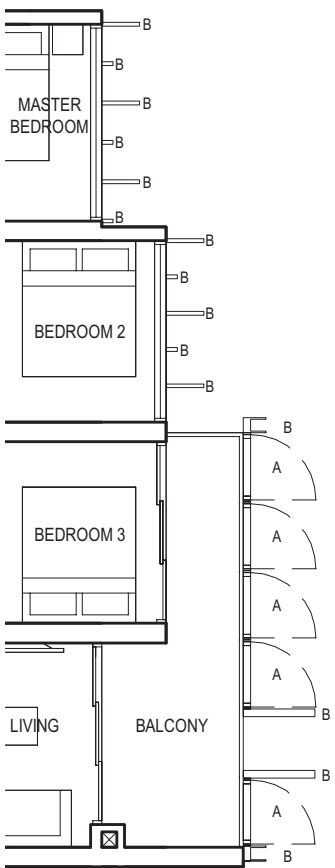
KEY PLAN

3-BEDROOM

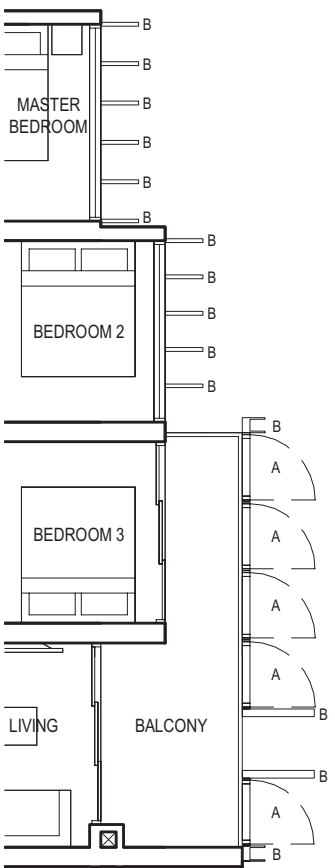
TYPE (3)a  
#03-13 to #29-13  
83 sq m



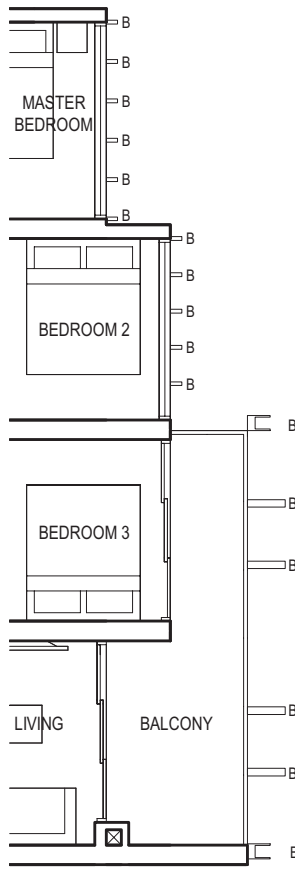
Applicable to unit  
#09-13 only



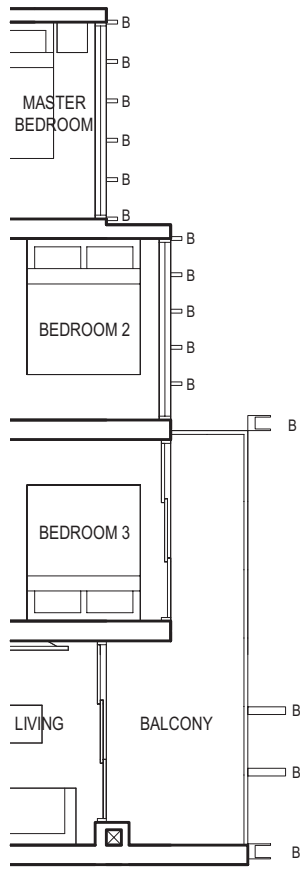
Applicable to unit  
#10-13 & #11-13 only



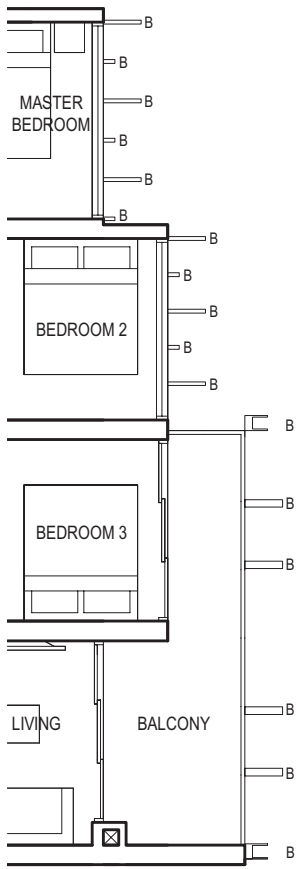
Applicable to unit  
#12-13, #13-13 &  
#21-13 to #23-13 only



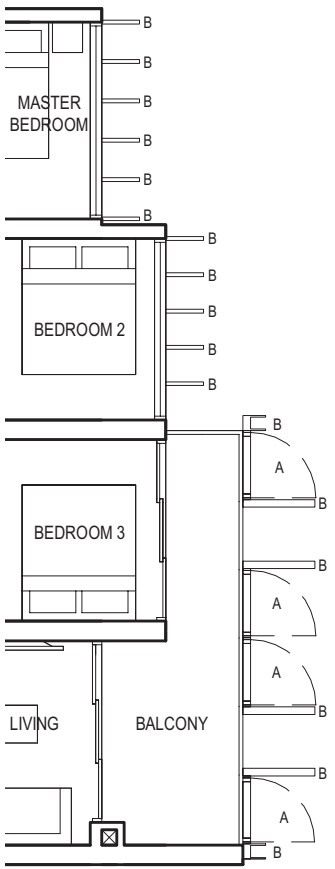
Applicable to unit  
#05-13 & #07-13 only



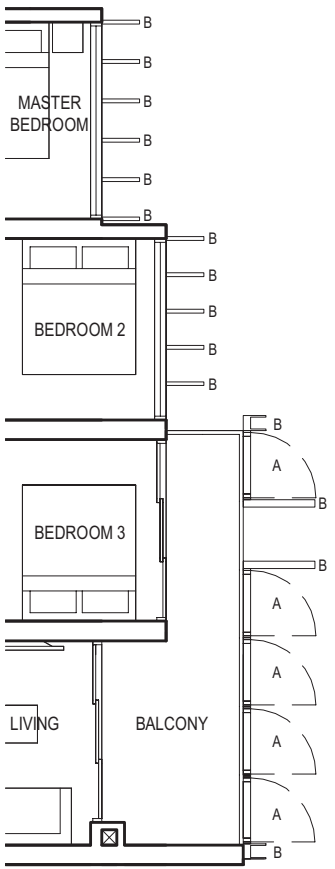
Applicable to unit  
#06-13 only



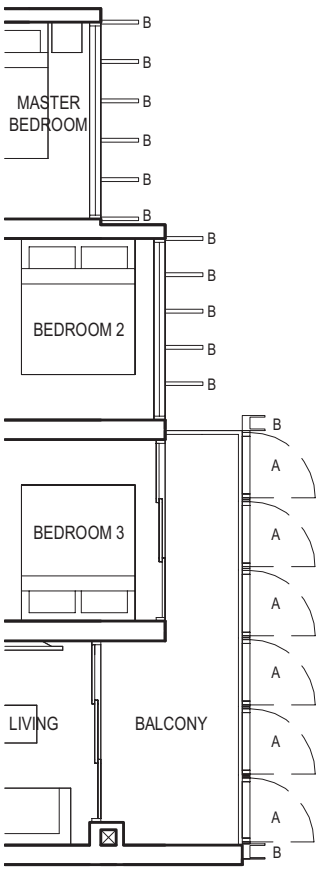
Applicable to unit  
#08-13 only



Applicable to unit  
#14-13, #19-13, #20-13 &  
#24-13 to #27-13 only



Applicable to unit  
#15-13 to #18-13 & #28-13 only



Applicable to unit  
#29-13 only



FULL HEIGHT VERTICAL VISUAL SCREENS:  
A - OPENABLE SCREEN    B - FIXED FIN    C - FIXED SCREEN

LEGEND:  
F - FRIDGE    DB - DISTRIBUTION BOARD    WC - WATER CLOSET    W/D - WASHER CUM DRYER    W - WASHER    D - DRYER    AC - AIRCON LEDGE

- \* VISUAL SCREENS ARE SUBJECT TO VISUAL CONTROL REQUIREMENT IMPOSED/APPROVED BY THE RELEVANT AUTHORITY.
- \* AREA INCLUDES AIRCON (AC) LEDGE, BALCONY AND PRIVATE ENCLOSED SPACE (PES).
- \* THE BALCONY/PRIVATE ENCLOSED SPACE (PES) SHALL NOT BE ENCLOSED UNLESS WITH THE APPROVED BALCONY/PES SCREEN. FOR AN ILLUSTRATION OF THE APPROVED BALCONY/PES SCREEN, PLEASE REFER TO THE DIAGRAM ANNEXED HERETO AS 'ANNEXURE 1'.

BLOCK 10



BLOCK 8



KEY PLAN

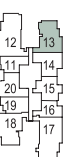


FULL HEIGHT VERTICAL VISUAL SCREENS:  
A - OPENABLE SCREEN    B - FIXED FIN    C - FIXED SCREEN

LEGEND:  
F - FRIDGE    DB - DISTRIBUTION BOARD    WC - WATER CLOSET    W/D - WASHER CUM DRYER    W - WASHER    D - DRYER    AC - AIRCON LEDGE

- \* VISUAL SCREENS ARE SUBJECT TO VISUAL CONTROL REQUIREMENT IMPOSED/APPROVED BY THE RELEVANT AUTHORITY.
- \* AREA INCLUDES AIRCON (AC) LEDGE, BALCONY AND PRIVATE ENCLOSED SPACE (PES).
- \* THE BALCONY/PRIVATE ENCLOSED SPACE (PES) SHALL NOT BE ENCLOSED UNLESS WITH THE APPROVED BALCONY/PES SCREEN. FOR AN ILLUSTRATION OF THE APPROVED BALCONY/PES SCREEN, PLEASE REFER TO THE DIAGRAM ANNEXED HERETO AS 'ANNEXURE 1'.

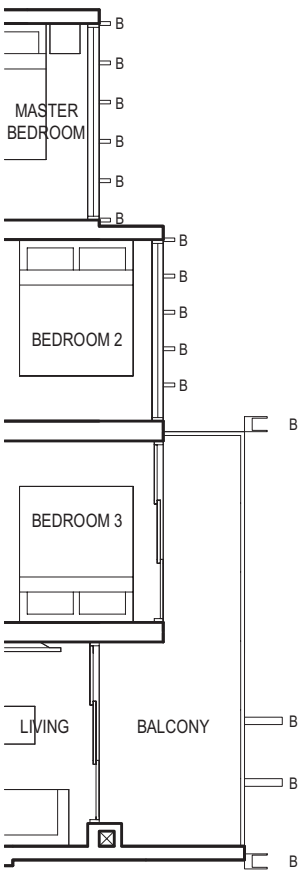
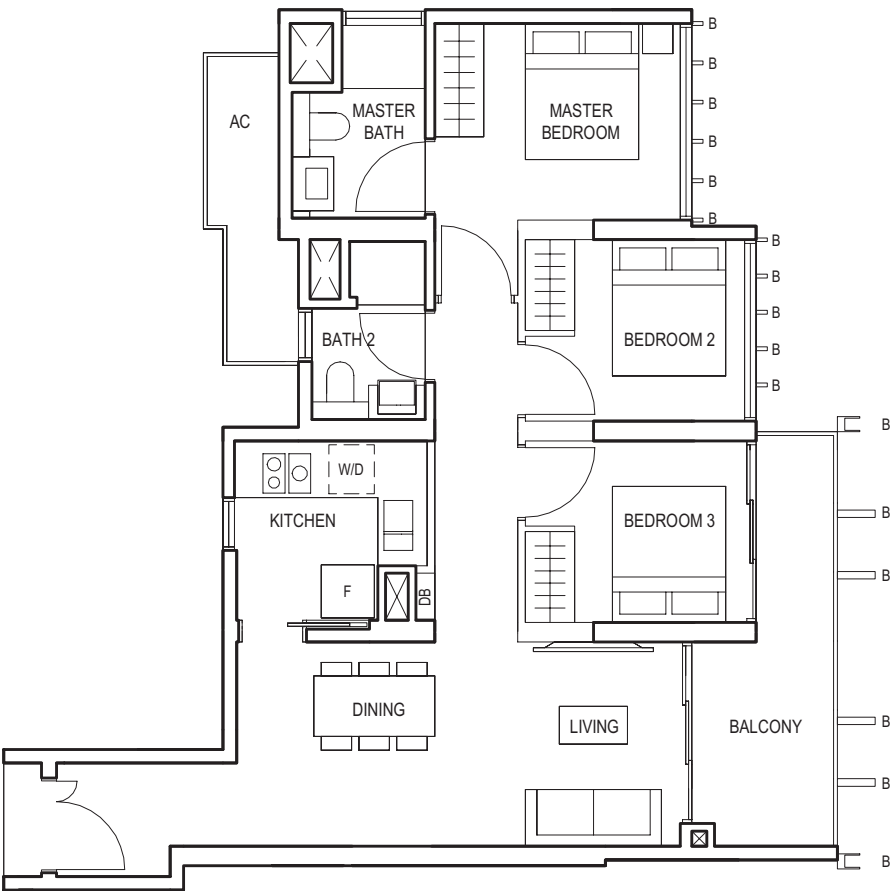
BLOCK 10



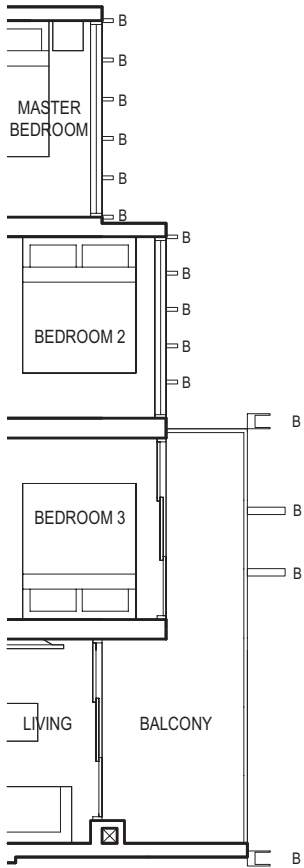


3-BEDROOM

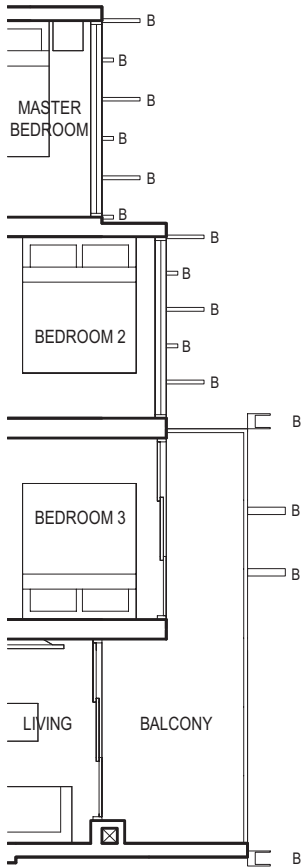
TYPE (3)b  
#03-08 to #29-08  
84 sq m



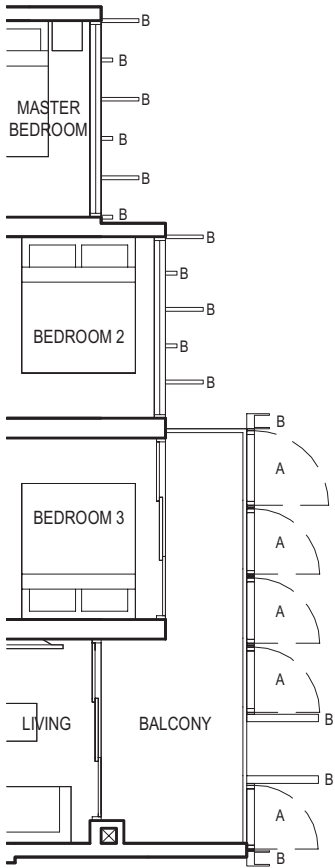
Applicable to unit  
#05-08 only



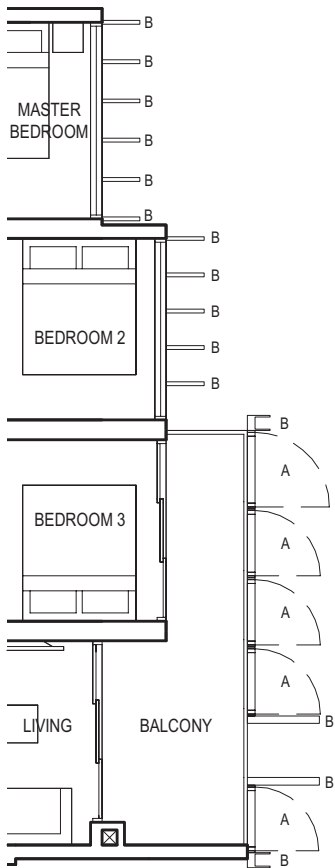
Applicable to unit  
#07-08 only



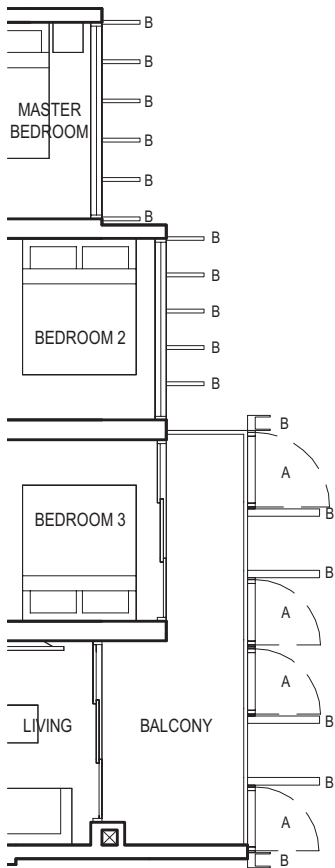
Applicable to unit  
#08-08 & #09-08 only



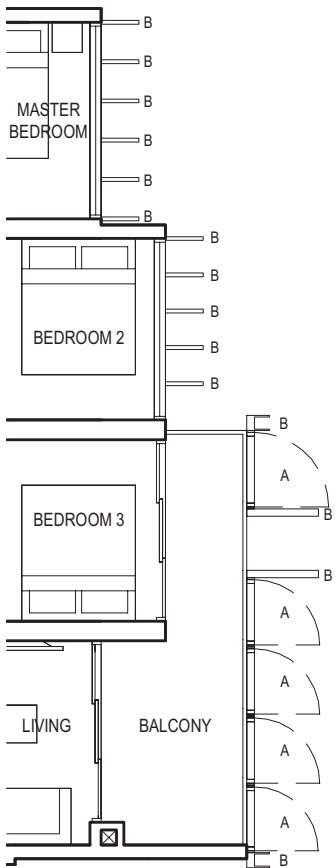
Applicable to unit  
#10-08 & #11-08 only



Applicable to unit  
#12-08, #13-08 &  
#21-08 to #24-08 only



Applicable to unit  
#14-08 only



Applicable to unit  
#15-08 to #20-08 &  
#25-08 to #29-08 only

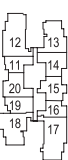


FULL HEIGHT VERTICAL VISUAL SCREENS:  
A - OPENABLE SCREEN    B - FIXED FIN    C - FIXED SCREEN

LEGEND:  
F - FRIDGE    DB - DISTRIBUTION BOARD    WC - WATER CLOSET    W/D - WASHER CUM DRYER    W - WASHER    D - DRYER    AC - AIRCON LEDGE

- \* VISUAL SCREENS ARE SUBJECT TO VISUAL CONTROL REQUIREMENT IMPOSED/APPROVED BY THE RELEVANT AUTHORITY.
- \* AREA INCLUDES AIRCON (AC) LEDGE, BALCONY AND PRIVATE ENCLOSED SPACE (PES).
- \* THE BALCONY/PRIVATE ENCLOSED SPACE (PES) SHALL NOT BE ENCLOSED UNLESS WITH THE APPROVED BALCONY/PES SCREEN. FOR AN ILLUSTRATION OF THE APPROVED BALCONY/PES SCREEN, PLEASE REFER TO THE DIAGRAM ANNEXED HERETO AS 'ANNEXURE 1'.

BLOCK 10



BLOCK 8



KEY PLAN



FULL HEIGHT VERTICAL VISUAL SCREENS:  
A - OPENABLE SCREEN    B - FIXED FIN    C - FIXED SCREEN

LEGEND:  
F - FRIDGE    DB - DISTRIBUTION BOARD    WC - WATER CLOSET    W/D - WASHER CUM DRYER    W - WASHER    D - DRYER    AC - AIRCON LEDGE

- \* VISUAL SCREENS ARE SUBJECT TO VISUAL CONTROL REQUIREMENT IMPOSED/APPROVED BY THE RELEVANT AUTHORITY.
- \* AREA INCLUDES AIRCON (AC) LEDGE, BALCONY AND PRIVATE ENCLOSED SPACE (PES).
- \* THE BALCONY/PRIVATE ENCLOSED SPACE (PES) SHALL NOT BE ENCLOSED UNLESS WITH THE APPROVED BALCONY/PES SCREEN. FOR AN ILLUSTRATION OF THE APPROVED BALCONY/PES SCREEN, PLEASE REFER TO THE DIAGRAM ANNEXED HERETO AS 'ANNEXURE 1'.

BLOCK 10



BLOCK 8

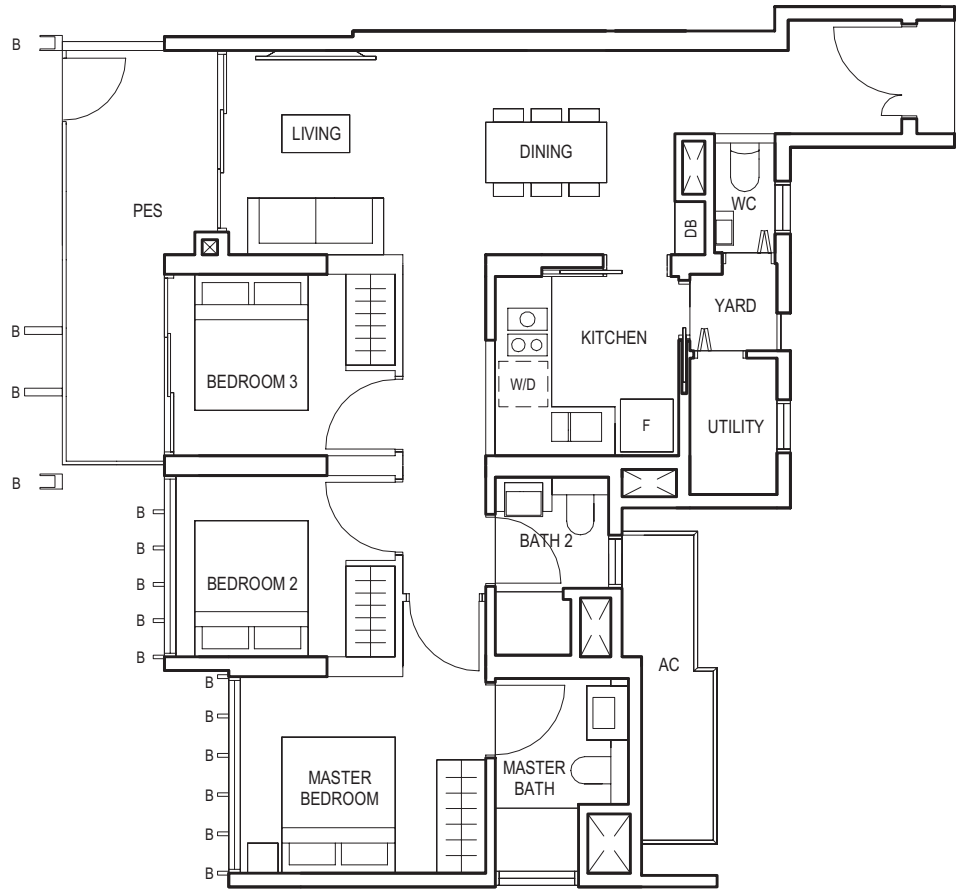


KEY PLAN

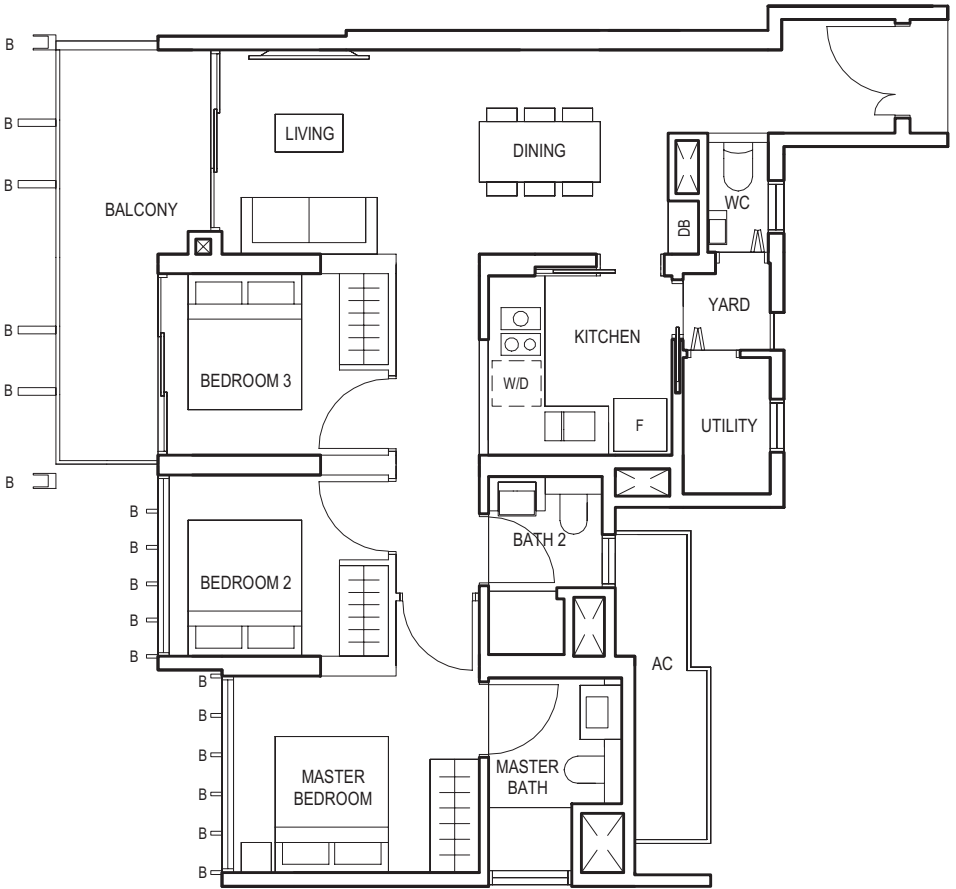
TYPE (3)b  
#03-08 to #29-08  
84 sq m

3-BEDROOM  
(with Yard)

TYPE (3Y)a1  
#01-18  
92 sq m



TYPE (3Y)a  
#02-18 to #29-18  
92 sq m



FULL HEIGHT VERTICAL VISUAL SCREENS:  
A - OPENABLE SCREEN    B - FIXED FIN    C - FIXED SCREEN

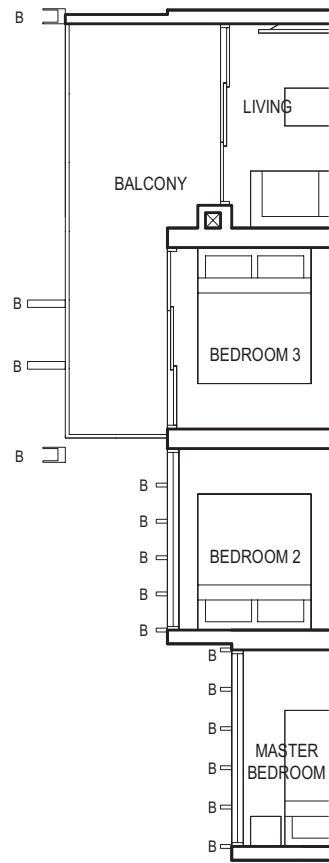
LEGEND:  
F - FRIDGE    DB - DISTRIBUTION BOARD    WC - WATER CLOSET    W/D - WASHER CUM DRYER    W - WASHER    D - DRYER    AC - AIRCON LEDGE

- \* VISUAL SCREENS ARE SUBJECT TO VISUAL CONTROL REQUIREMENT IMPOSED/APPROVED BY THE RELEVANT AUTHORITY.
- \* AREA INCLUDES AIRCON (AC) LEDGE, BALCONY AND PRIVATE ENCLOSED SPACE (PES).
- \* THE BALCONY/PRIVATE ENCLOSED SPACE (PES) SHALL NOT BE ENCLOSED UNLESS WITH THE APPROVED BALCONY/PES SCREEN. FOR AN ILLUSTRATION OF THE APPROVED BALCONY/PES SCREEN, PLEASE REFER TO THE DIAGRAM ANNEXED HERETO AS 'ANNEXURE 1'.

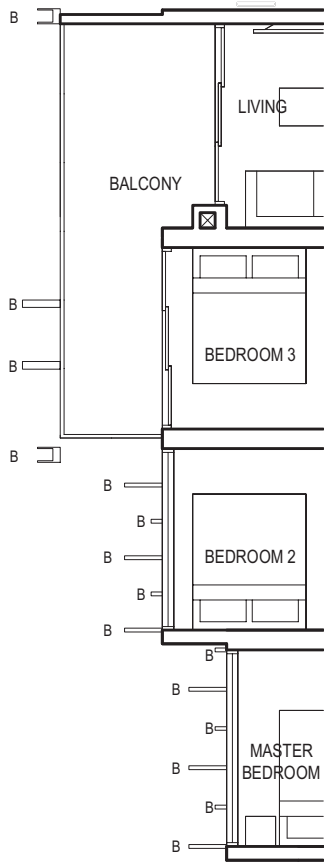


KEY PLAN

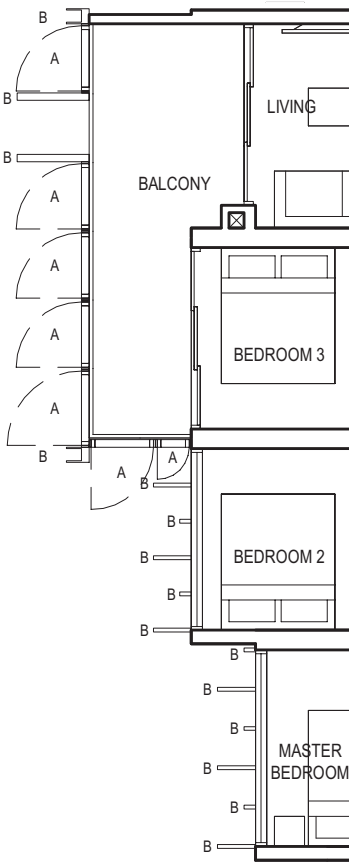
TYPE (3Y)a  
#02-18 to #29-18  
92 sq m



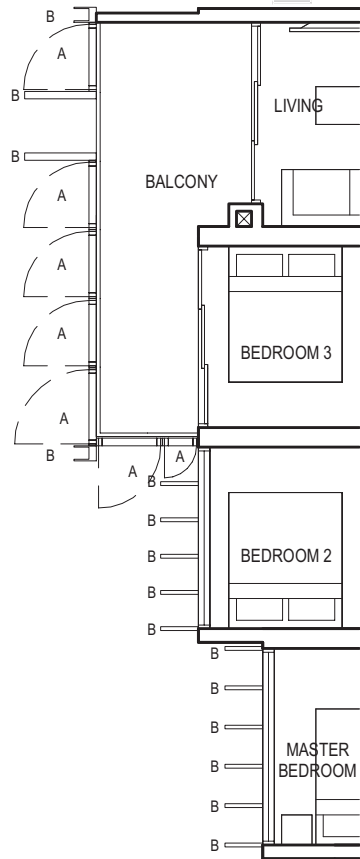
Applicable to unit  
#07-18 only



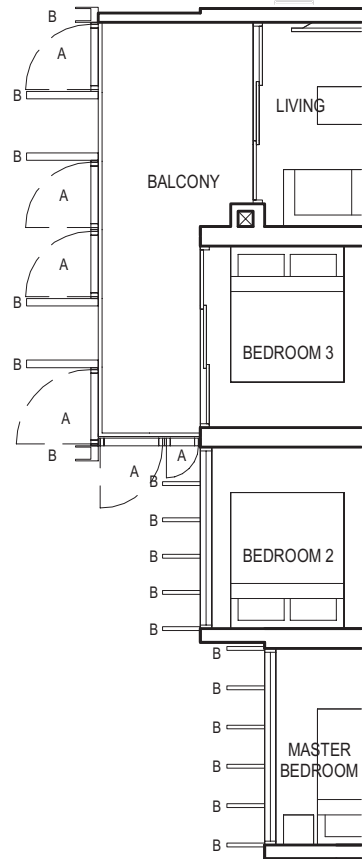
Applicable to unit  
#08-18 & #09-18 only



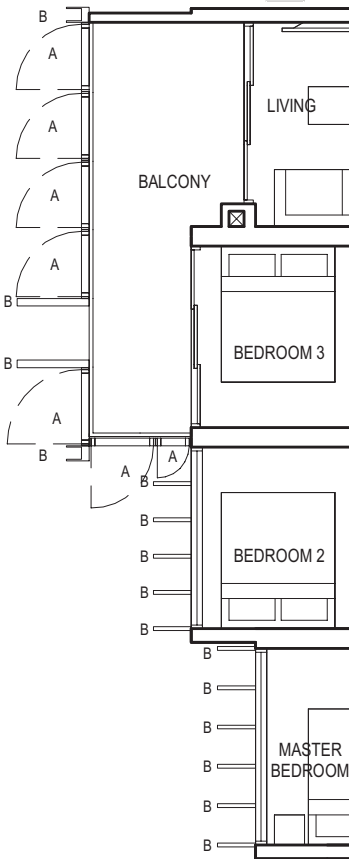
Applicable to unit  
#10-18 & #11-18 only



Applicable to unit  
#12-18, #13-18 &  
#21-18 to #24-18 only



Applicable to unit  
#14-18 only



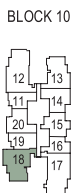
Applicable to unit  
#15-18 to #20-18 &  
#25-18 to #29-18 only



FULL HEIGHT VERTICAL VISUAL SCREENS:  
A - OPENABLE SCREEN    B - FIXED FIN    C - FIXED SCREEN

LEGEND:  
F - FRIDGE    DB - DISTRIBUTION BOARD    WC - WATER CLOSET    W/D - WASHER CUM DRYER    W - WASHER    D - DRYER    AC - AIRCON LEDGE

- \* VISUAL SCREENS ARE SUBJECT TO VISUAL CONTROL REQUIREMENT IMPOSED/APPROVED BY THE RELEVANT AUTHORITY.
- \* AREA INCLUDES AIRCON (AC) LEDGE, BALCONY AND PRIVATE ENCLOSED SPACE (PES).
- \* THE BALCONY/PRIVATE ENCLOSED SPACE (PES) SHALL NOT BE ENCLOSED UNLESS WITH THE APPROVED BALCONY/PES SCREEN. FOR AN ILLUSTRATION OF THE APPROVED BALCONY/PES SCREEN, PLEASE REFER TO THE DIAGRAM ANNEXED HERETO AS 'ANNEXURE 1'.

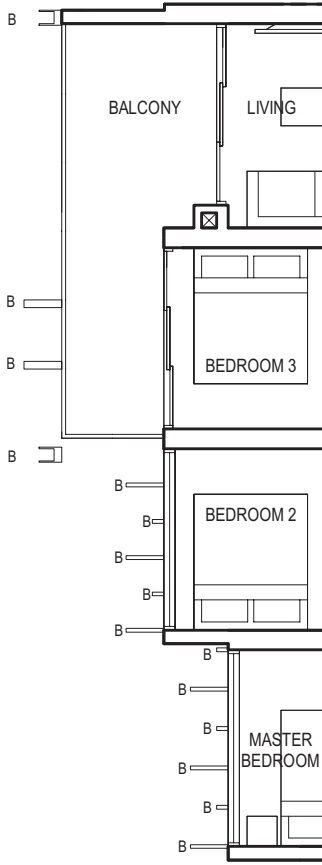
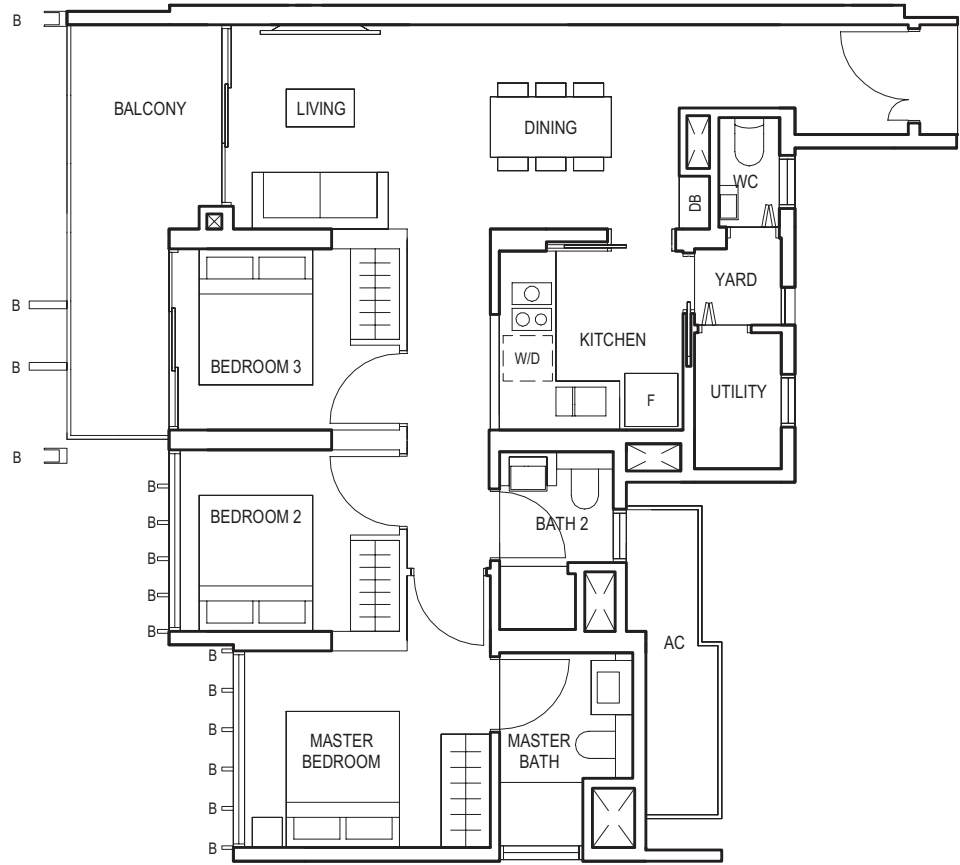


KEY PLAN

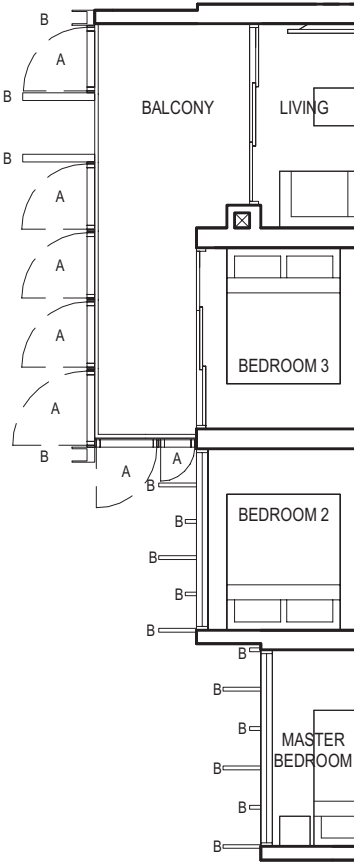


3-BEDROOM  
(with Yard)

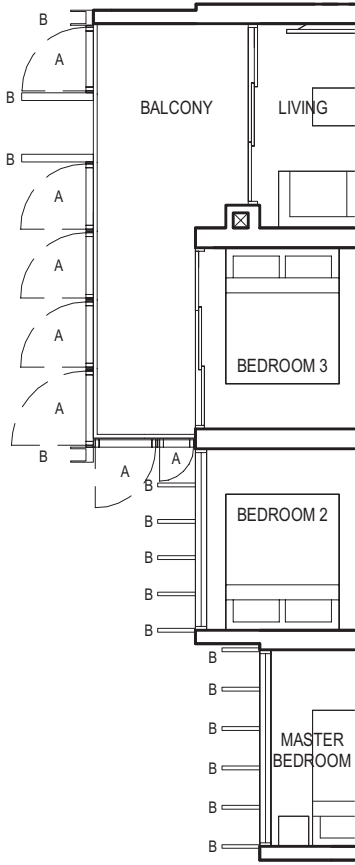
TYPE (3Y)b  
#03-03 to #29-03  
92 sq m



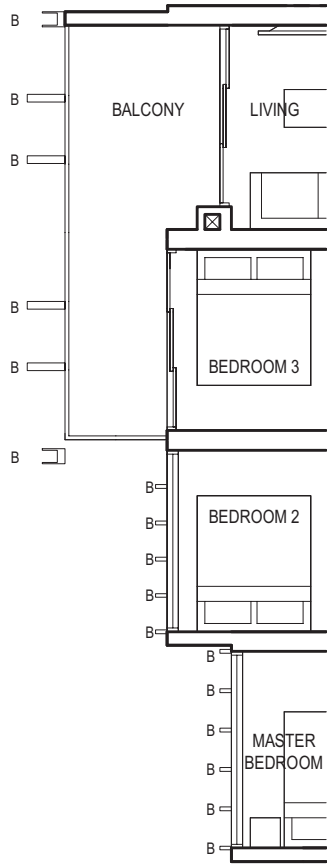
Applicable to unit  
#09-03 only



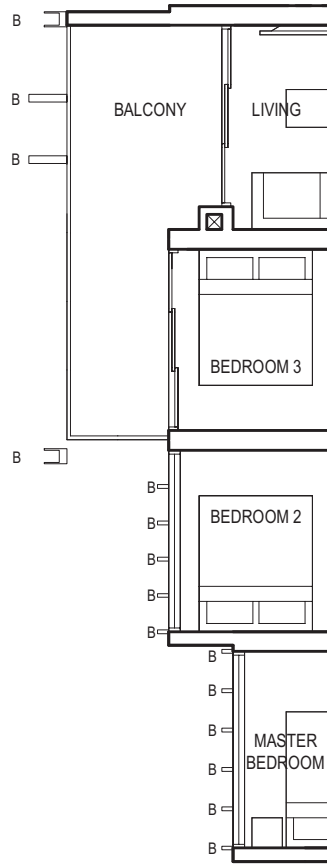
Applicable to unit  
#10-03 & #11-03 only



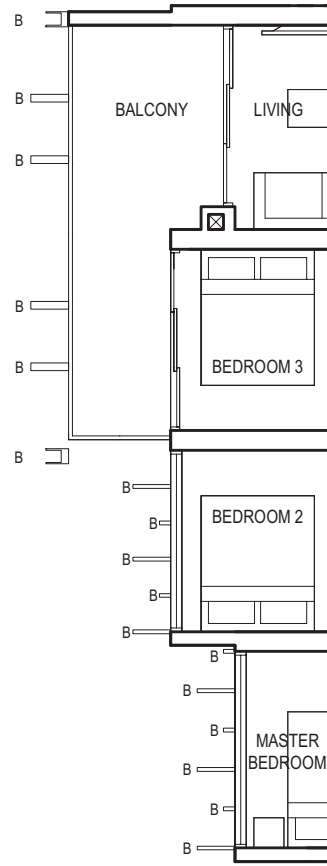
Applicable to unit  
#12-03, #13-03 &  
#21-03 to #23-03 only



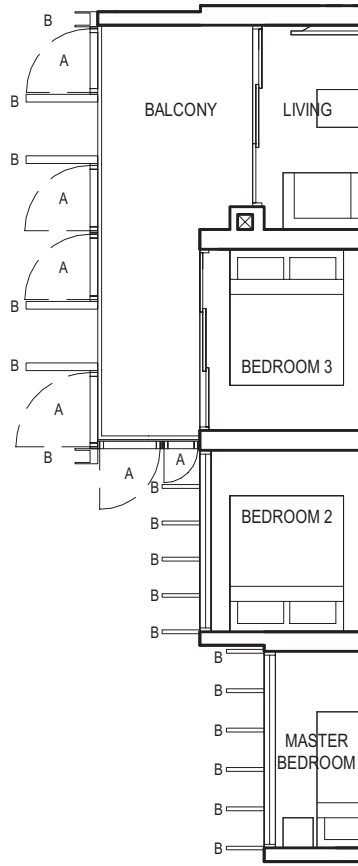
Applicable to unit  
#05-03 & #07-03 only



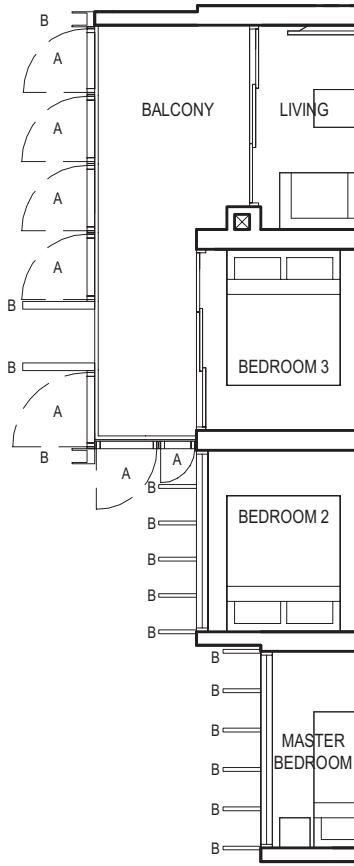
Applicable to unit  
#06-03 only



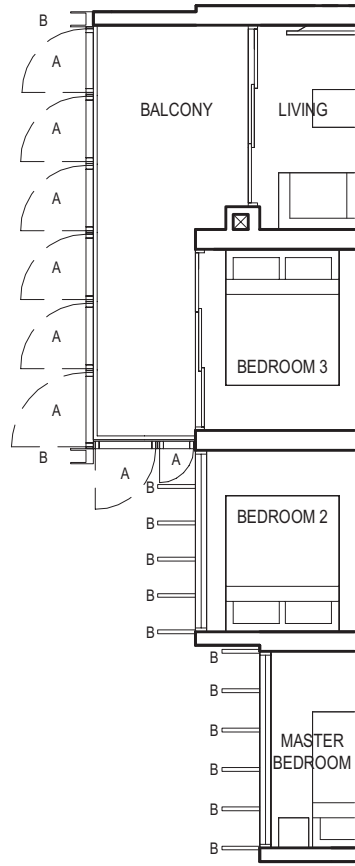
Applicable to unit  
#08-03 only



Applicable to unit  
#14-03, #19-03, #20-03 &  
#24-03 to #27-03 only



Applicable to unit  
#15-03 to #18-03 & #28-03 only



Applicable to unit  
#29-03 only

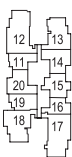


FULL HEIGHT VERTICAL VISUAL SCREENS:  
A - OPENABLE SCREEN B - FIXED FIN C - FIXED SCREEN

LEGEND:  
F - FRIDGE DB - DISTRIBUTION BOARD WC - WATER CLOSET W/D - WASHER CUM DRYER W - WASHER D - DRYER AC - AIRCON LEDGE

- \* VISUAL SCREENS ARE SUBJECT TO VISUAL CONTROL REQUIREMENT IMPOSED/APPROVED BY THE RELEVANT AUTHORITY.
- \* AREA INCLUDES AIRCON (AC) LEDGE, BALCONY AND PRIVATE ENCLOSED SPACE (PES).
- \* THE BALCONY/PRIVATE ENCLOSED SPACE (PES) SHALL NOT BE ENCLOSED UNLESS WITH THE APPROVED BALCONY/PES SCREEN. FOR AN ILLUSTRATION OF THE APPROVED BALCONY/PES SCREEN, PLEASE REFER TO THE DIAGRAM ANNEXED HERETO AS 'ANNEXURE 1'.

BLOCK 10



BLOCK 8



KEY PLAN



FULL HEIGHT VERTICAL VISUAL SCREENS:  
A - OPENABLE SCREEN B - FIXED FIN C - FIXED SCREEN

LEGEND:  
F - FRIDGE DB - DISTRIBUTION BOARD WC - WATER CLOSET W/D - WASHER CUM DRYER W - WASHER D - DRYER AC - AIRCON LEDGE

- \* VISUAL SCREENS ARE SUBJECT TO VISUAL CONTROL REQUIREMENT IMPOSED/APPROVED BY THE RELEVANT AUTHORITY.
- \* AREA INCLUDES AIRCON (AC) LEDGE, BALCONY AND PRIVATE ENCLOSED SPACE (PES).
- \* THE BALCONY/PRIVATE ENCLOSED SPACE (PES) SHALL NOT BE ENCLOSED UNLESS WITH THE APPROVED BALCONY/PES SCREEN. FOR AN ILLUSTRATION OF THE APPROVED BALCONY/PES SCREEN, PLEASE REFER TO THE DIAGRAM ANNEXED HERETO AS 'ANNEXURE 1'.

BLOCK 10



BLOCK 8

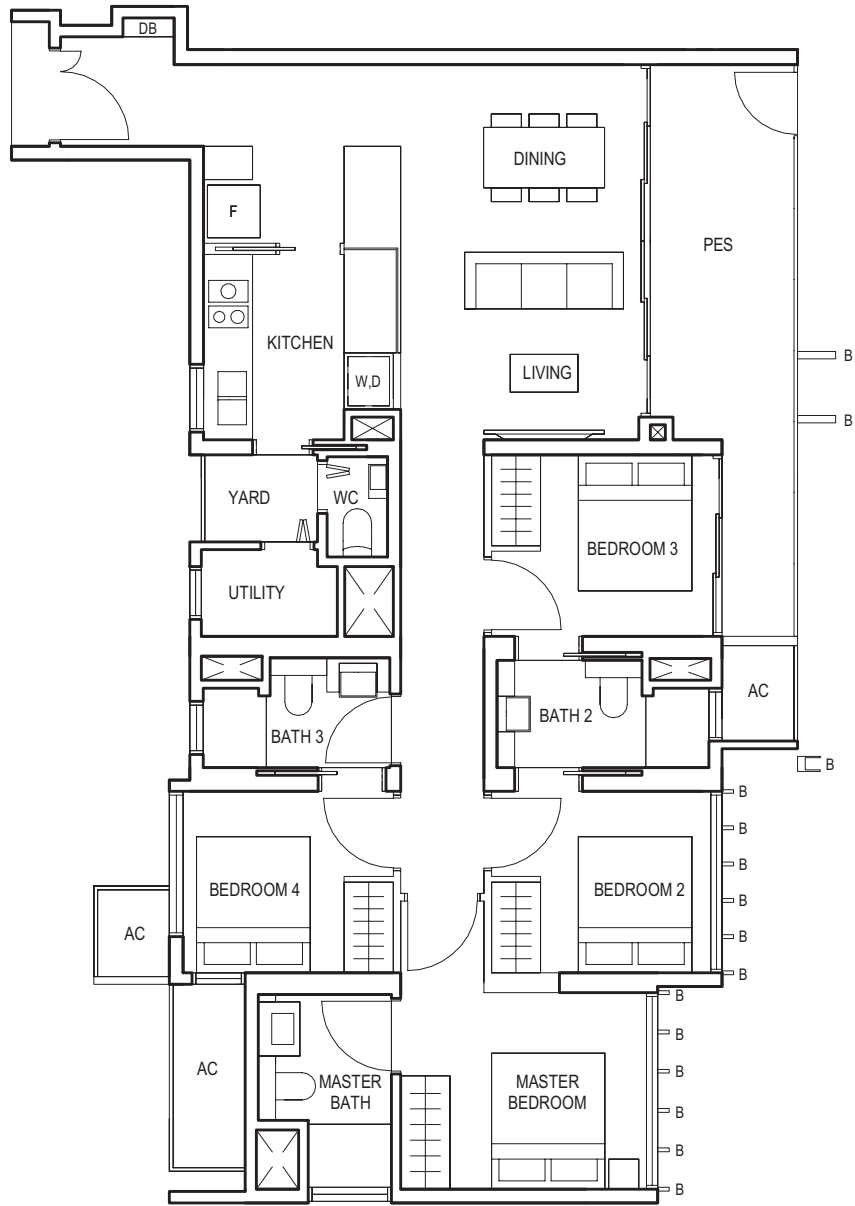


KEY PLAN

TYPE (3Y)b  
#03-03 to #29-03  
92 sq m

4-BEDROOM

TYPE (4)a1  
#01-17  
116 sq m



TYPE (4)a  
#02-17 to #29-17  
116 sq m

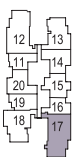


FULL HEIGHT VERTICAL VISUAL SCREENS:  
A - OPENABLE SCREEN    B - FIXED FIN    C - FIXED SCREEN

LEGEND:  
F - FRIDGE    DB - DISTRIBUTION BOARD    WC - WATER CLOSET    W/D - WASHER CUM DRYER    W - WASHER    D - DRYER    AC - AIRCON LEDGE

- \* VISUAL SCREENS ARE SUBJECT TO VISUAL CONTROL REQUIREMENT IMPOSED/APPROVED BY THE RELEVANT AUTHORITY.
- \* AREA INCLUDES AIRCON (AC) LEDGE, BALCONY AND PRIVATE ENCLOSED SPACE (PES).
- \* THE BALCONY/PRIVATE ENCLOSED SPACE (PES) SHALL NOT BE ENCLOSED UNLESS WITH THE APPROVED BALCONY/PES SCREEN. FOR AN ILLUSTRATION OF THE APPROVED BALCONY/PES SCREEN, PLEASE REFER TO THE DIAGRAM ANNEXED HERETO AS 'ANNEXURE 1'.

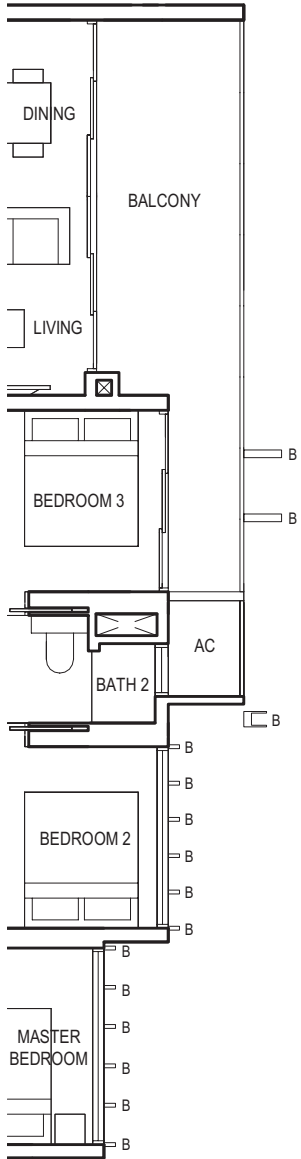
BLOCK 10



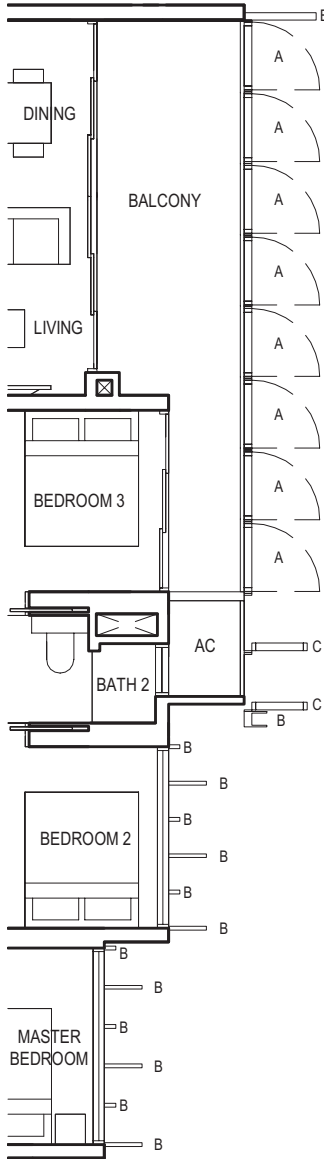
BLOCK 8



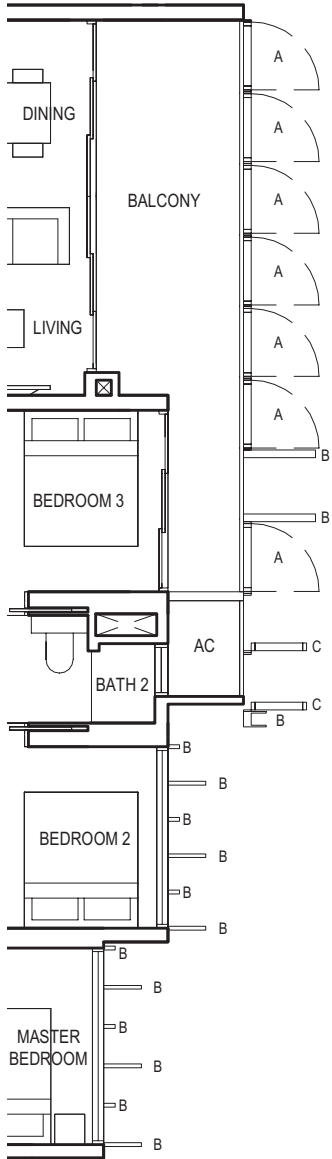
KEY PLAN



Applicable to unit  
#06-17 to #08-17 only

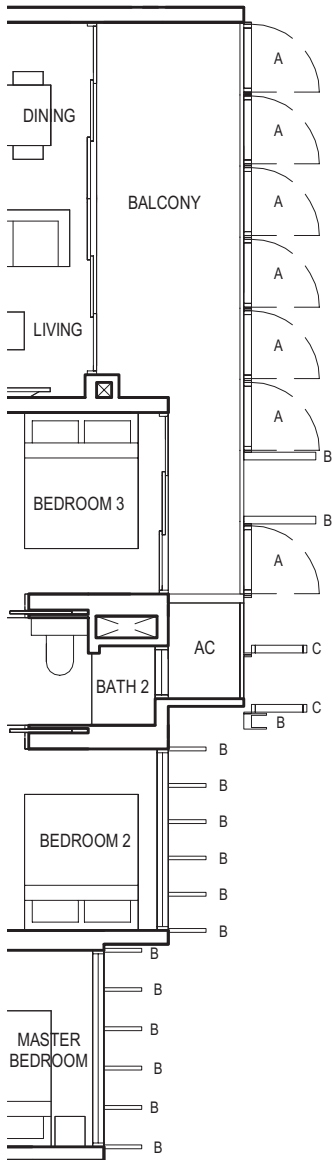


Applicable to unit  
#09-17 & #10-17 only

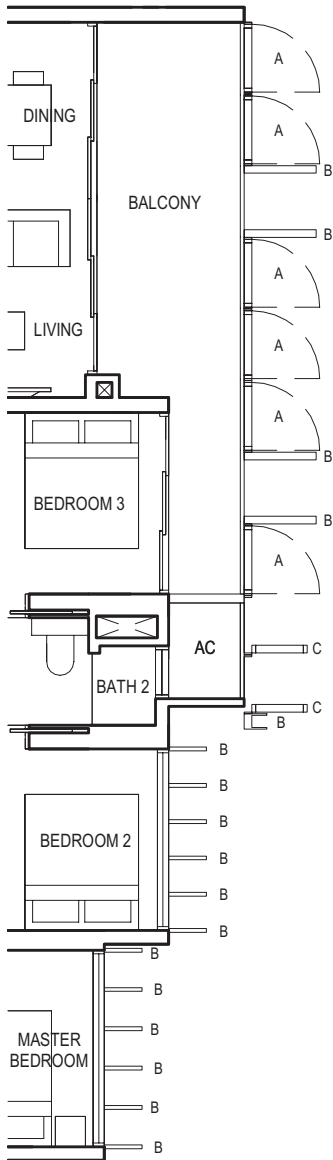


Applicable to unit  
#11-17 only

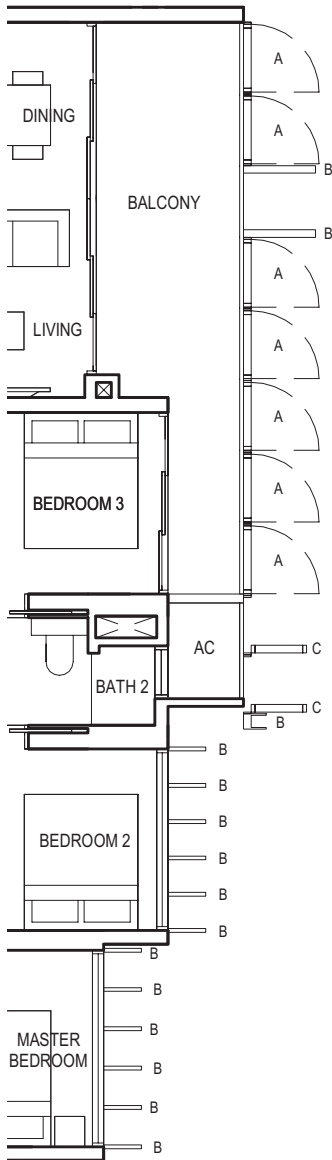
TYPE (4)a  
#02-17 to #29-17  
116 sq m



Applicable to unit  
#12-17, #13-17, #19-17,  
#20-17 & #29-17 only



Applicable to unit  
#14-17, #17-17, #18-17, #21-17 to #23-17 &  
#25-17 to #28-17 only



Applicable to unit  
#15-17, #16-17 & #24-17 only



FULL HEIGHT VERTICAL VISUAL SCREENS:  
A - OPENABLE SCREEN    B - FIXED FIN    C - FIXED SCREEN

LEGEND:  
F - FRIDGE    DB - DISTRIBUTION BOARD    WC - WATER CLOSET    W/D - WASHER CUM DRYER    W - WASHER    D - DRYER    AC - AIRCON LEDGE

- \* VISUAL SCREENS ARE SUBJECT TO VISUAL CONTROL REQUIREMENT IMPOSED/APPROVED BY THE RELEVANT AUTHORITY.
- \* AREA INCLUDES AIRCON (AC) LEDGE, BALCONY AND PRIVATE ENCLOSED SPACE (PES).
- \* THE BALCONY/PRIVATE ENCLOSED SPACE (PES) SHALL NOT BE ENCLOSED UNLESS WITH THE APPROVED BALCONY/PES SCREEN. FOR AN ILLUSTRATION OF THE APPROVED BALCONY/PES SCREEN, PLEASE REFER TO THE DIAGRAM ANNEXED HERETO AS 'ANNEXURE 1'.

BLOCK 10



BLOCK 8

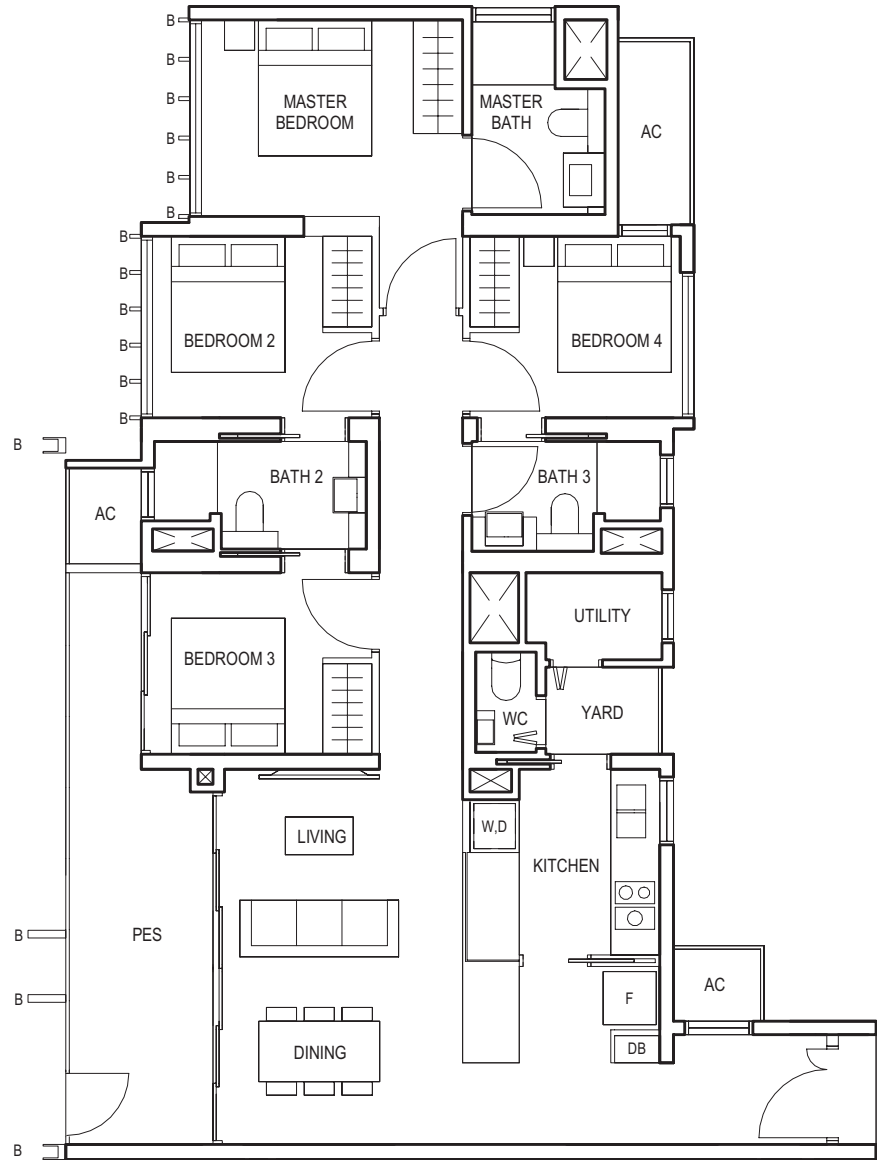


KEY PLAN

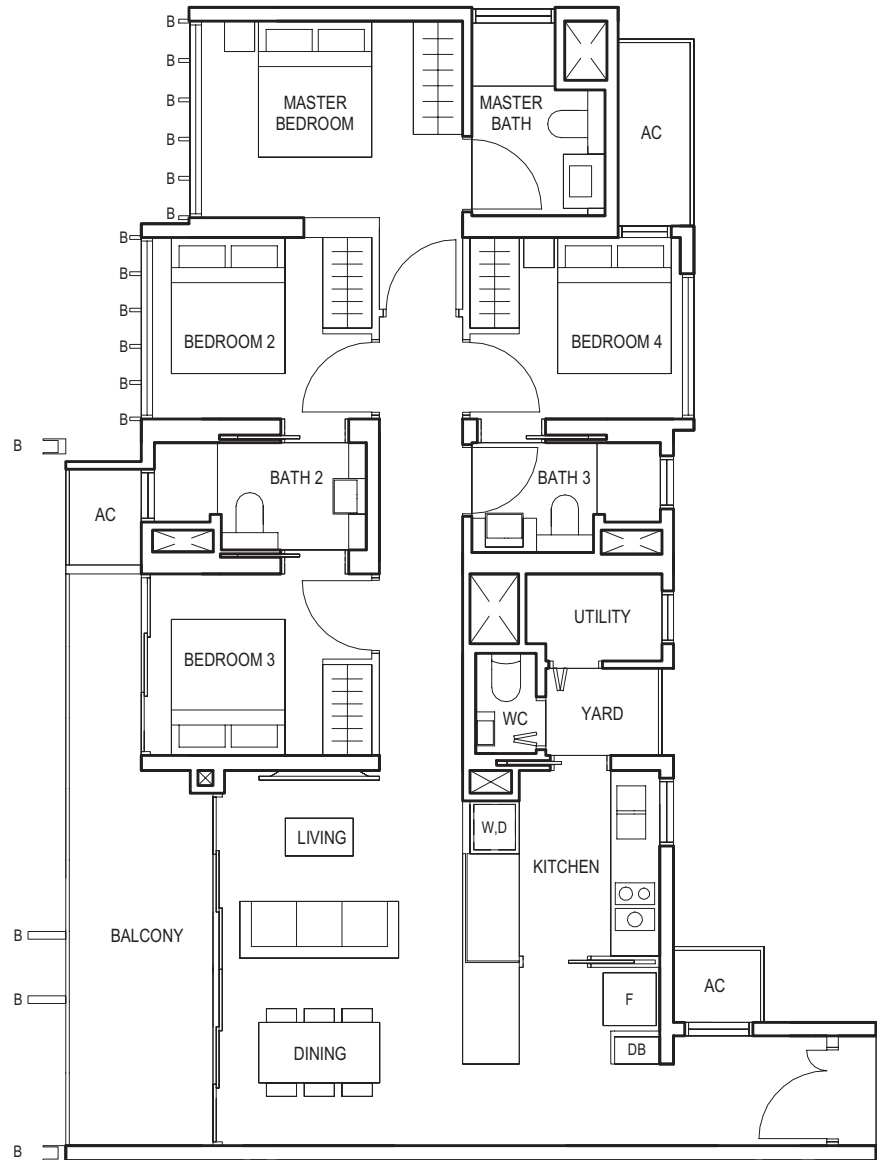


4-BEDROOM

TYPE (4)b1  
#01-12  
117 sq m



TYPE (4)b  
#02-12 to #29-12  
117 sq m



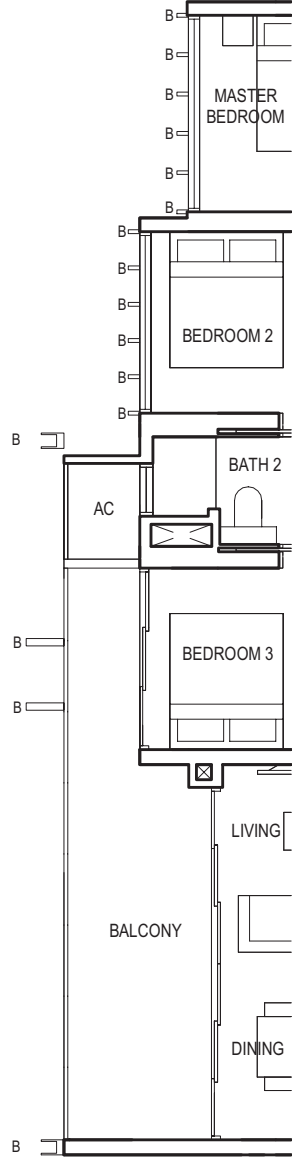
FULL HEIGHT VERTICAL VISUAL SCREENS:  
A - OPENABLE SCREEN    B - FIXED FIN    C - FIXED SCREEN

LEGEND:  
F - FRIDGE    DB - DISTRIBUTION BOARD    WC - WATER CLOSET    W/D - WASHER CUM DRYER    W - WASHER    D - DRYER    AC - AIRCON LEDGE

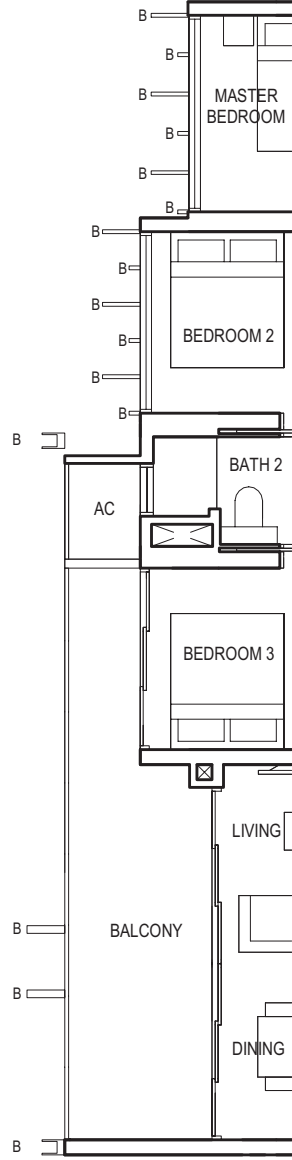
- \* VISUAL SCREENS ARE SUBJECT TO VISUAL CONTROL REQUIREMENT IMPOSED/APPROVED BY THE RELEVANT AUTHORITY.
- \* AREA INCLUDES AIRCON (AC) LEDGE, BALCONY AND PRIVATE ENCLOSED SPACE (PES).
- \* THE BALCONY/PRIVATE ENCLOSED SPACE (PES) SHALL NOT BE ENCLOSED UNLESS WITH THE APPROVED BALCONY/PES SCREEN. FOR AN ILLUSTRATION OF THE APPROVED BALCONY/PES SCREEN, PLEASE REFER TO THE DIAGRAM ANNEXED HERETO AS 'ANNEXURE 1'.



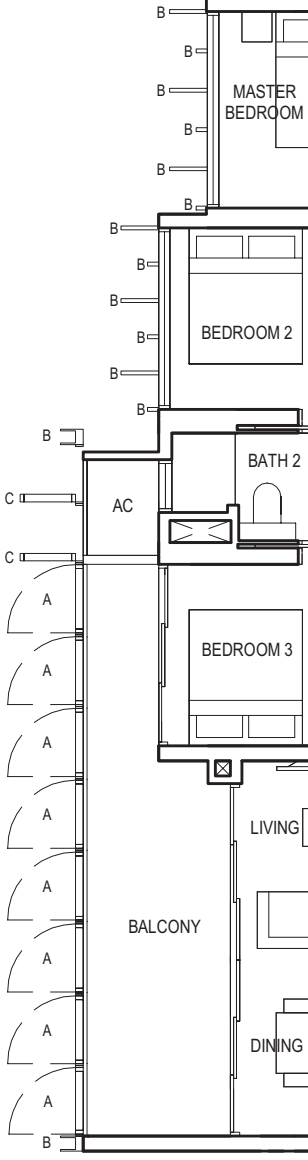
KEY PLAN



Applicable to unit  
#04-12 & #05-12 only



Applicable to unit  
#08-12 only



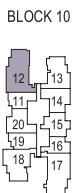
Applicable to unit  
#09-12 & #10-12 only



FULL HEIGHT VERTICAL VISUAL SCREENS:  
A - OPENABLE SCREEN    B - FIXED FIN    C - FIXED SCREEN

LEGEND:  
F - FRIDGE    DB - DISTRIBUTION BOARD    WC - WATER CLOSET    W/D - WASHER CUM DRYER    W - WASHER    D - DRYER    AC - AIRCON LEDGE

- \* VISUAL SCREENS ARE SUBJECT TO VISUAL CONTROL REQUIREMENT IMPOSED/APPROVED BY THE RELEVANT AUTHORITY.
- \* AREA INCLUDES AIRCON (AC) LEDGE, BALCONY AND PRIVATE ENCLOSED SPACE (PES).
- \* THE BALCONY/PRIVATE ENCLOSED SPACE (PES) SHALL NOT BE ENCLOSED UNLESS WITH THE APPROVED BALCONY/PES SCREEN. FOR AN ILLUSTRATION OF THE APPROVED BALCONY/PES SCREEN, PLEASE REFER TO THE DIAGRAM ANNEXED HERETO AS 'ANNEXURE 1'.

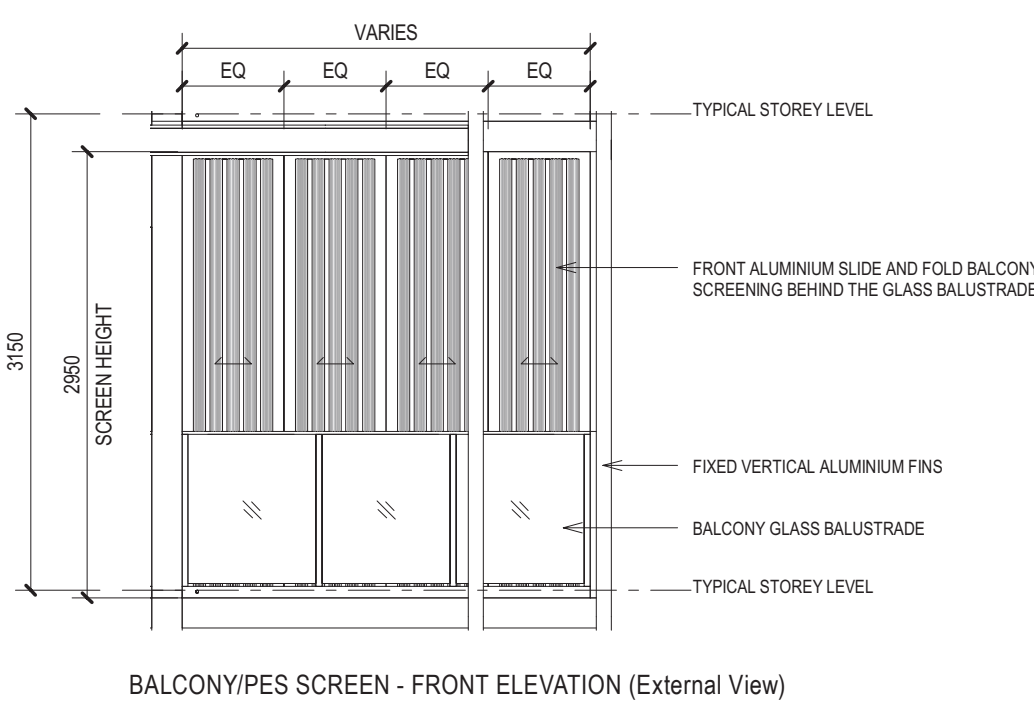
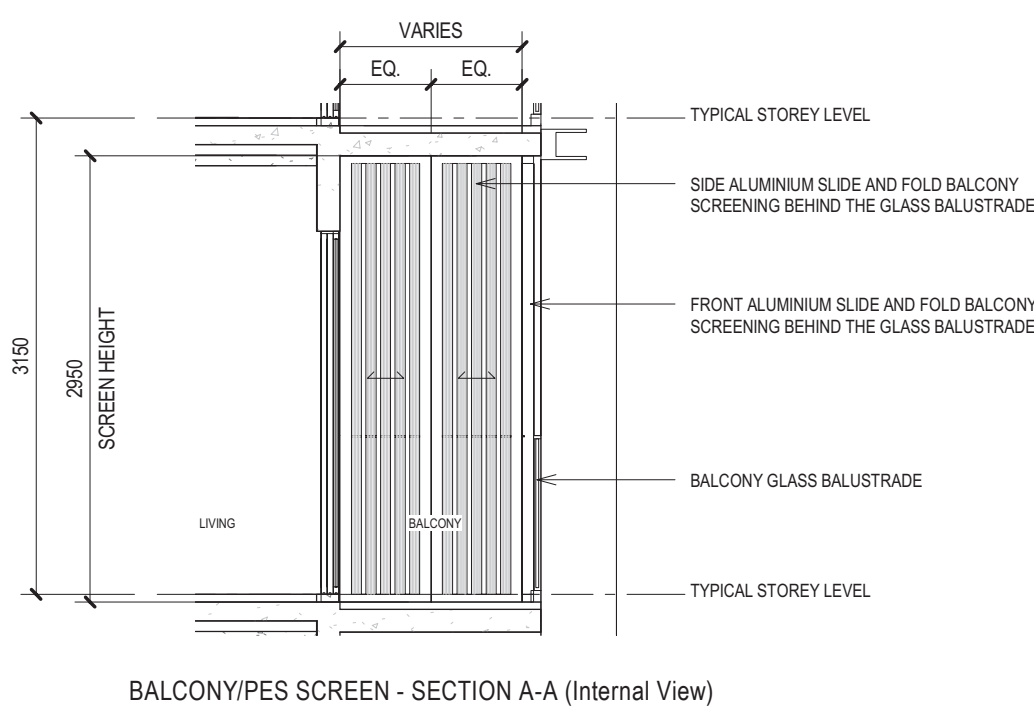
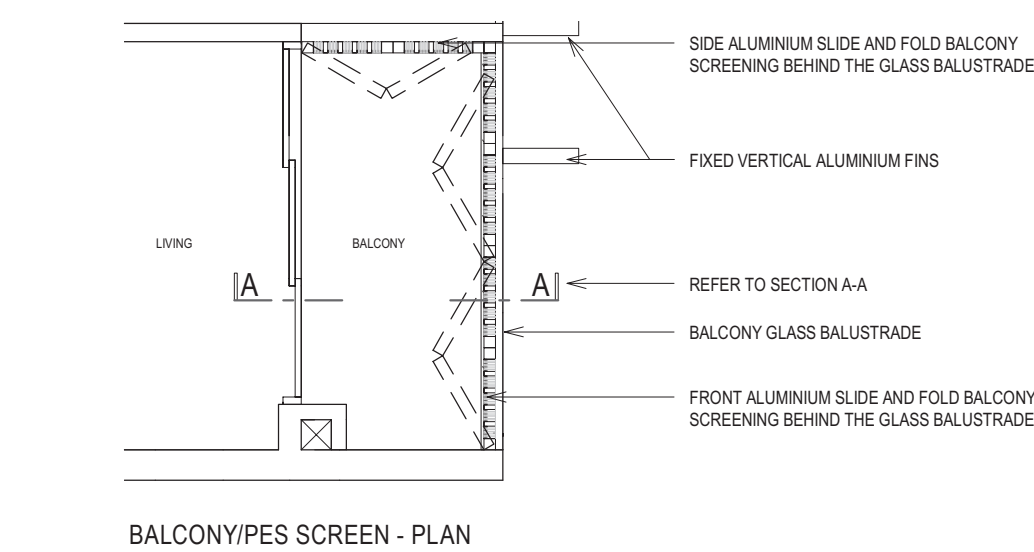


KEY PLAN

TYPE (4)b  
#02-12 to #29-12  
117 sq m

ANNEXURE 1

APPROVED SCREEN FOR BALCONY AND PRIVATE ENCLOSED SPACE (PES)



NOTES:  
1. THE BALCONY / PES SHALL NOT BE ENCLOSED UNLESS WITH THE APPROVED SCREEN AS SHOWN ABOVE ("APPROVED SCREEN");  
2. BALCONY/ PES SCREEN IS NOT PROVIDED. THE COST OF SCREEN AND INSTALLATION OF THE APPROVED SCREEN SHALL BE BORNE BY THE PURCHASER; AND  
3. ON-SITE VERIFICATION IS NECESSARY TO OBTAIN ACTUAL MEASUREMENTS PRIOR TO FABRICATION AND INSTALLATION OF THE APPROVED SCREEN.

EQ - EQUIDISTANT

SHOW SUITES ALONG ELIZABETH DRIVE

8 & 10 Hillview Rise  
Singapore 110502

A Joint Venture Between



HONG LEONG  
HOLDINGS LIMITED  
豐隆實業有限公司  
(UEN.196800290Z)

Hong Realty (Private) Limited  
(UEN. 196200244W)

Developer: Hillview Rise Development Pte. Ltd. (UEN. 201826026W) • Developer's Licence No.: C1338 • Tenure of Land: Leasehold (99 years lease commencing from 1 October 2018) • Encumbrances: Mortgage IF/461947P in favour of DBS Bank Ltd. • Date of Notice of Vacant Possession under the Sale and Purchase Agreement: No later than 1 September 2024 • Expected Date of Legal Completion: No later than 1 September 2027 or 3 years after the Date of Delivery of Vacant Possession, whichever is the earlier • Location & Lot No.: Lot MK10-5079K at 8 & 10 Hillview Rise

While every reasonable care has been taken in preparing this brochure, the developer cannot be held responsible for any inaccuracies. All statements are believed to be correct but are not to be regarded as statement or representation of facts. Visual representations, illustrations, photographs and renderings are intended to portray only impressions of the development. All information and specifications are current at the time of press and are subject to change as may be required and cannot form part of an offer or contract.



